

Product datasheet for **VC102537**

nonstructural protein NS4B (NC_012532) Virus Tagged ORF Clone

Product data:

Product Type:	Expression Plasmids
Product Name:	nonstructural protein NS4B (NC_012532) Virus Tagged ORF Clone
Tag:	Myc-DDK
Symbol:	nonstructural protein NS4B
Synonyms:	ZIKV_gp1, ZIKV
Mammalian Cell Selection:	Neomycin
Vector:	pCMV6-Entry (PS100001)
E. coli Selection:	Kanamycin (25 ug/mL)
ORF Nucleotide Sequence:	>The Viral ORF clone VC102537 represents NCBI reference of YP_009227204 with codon optimized for human cell expression Red=Cloning site Blue=ORF Green=Tags(s)

TTTTGTAATACGACTCACTATAGGGCGGCCGGAATTCGTCGACTGGATCCGGTACCGAGGAGATCTGCC
GCC**CGATCGCC**

ATGAATGAACTTGGTTGGCTGGAACGAACAAAAACGATATTGCTCACCTGATGGGACGACGAGAAGAGG
GTGCTACGATGGGATTTCTATGGATATTGACCTCCGACCTGCCAGCGCCTGGGCAATCTATGCTGCCTT
GACTACTCTGATTACTCCCGCAGTGCAACACGCAGTTACCACATCTTACAATAACTATTCTCTCATGGCC
ATGGCCACACAGGCTGGGGTGCTGTTCCGGTATGGGTAAGGAATGCCATTTATGCACGGCGATCTCGGTG
TACCCCTCTTGATGATGGGCTGCTATTCTCAACTGACCCCTCTGACCCTGATCGTAGCTATTATACTGCT
GGTCGCACATTATATGTACCTCATCCCAGGTCTTCAGGCAGCGGCAGCGGGGCAGCACAGAAGAGGACC
GCTGCCGGAATCATGAAGAACCAGTAGTGGATGGAATCGTCGTCACAGACATAGACACCATGACTATTG
ATCCTCAGGTGGAAAAGAAAATGGGACAGGTCTTGCTCATTGCAGTTGCTATTTCTTCAGCCGCTTGCT
TAGAACAGCTTGGGGTGGGGAGAGGCCGGAGCTTTGATCACAGCCGCCACTTCAACACTCTGGGAAGGC
TCACCTAACAAATATTGGAACATCTACAGCGACGTCTTTGTAACATTTTCAGAGGGTCTTATCTCG
CGGGCGCATCACTCATATACACTGTCAAAAGGAATCGGGCCCTGGTAAAGCGGCCA

ACGCGTACGCGGCCGCTCGAGCAGAAACTCATCTCAGAAGAGGATCTGGCAGCAAATGATATCCTGGATT
ACAAGGATGACGACGATAAGGTTTAA



Protein Sequence: >VC102537 representing YP_009227204
 Red=Cloning sites Green=Tags

MNELGWLERTKNDIAHLMGRREEGATMGFSMDIDLRPASAWAIYAALTTLITPAVQHAVTTSYNNYSLMA
 MATQAGVLFMGKGMPFMHGDLGVPLLMGCYSQLTPLTLIVAILLLVAHYMYLIPGLQAAAAARAAQKRT
 AAGIMKNPVVDGIVVTDIDTMTIDPQVEKKMGQVLLIAVAISSAVLLRTAWGWGEAGALITAATSTLWEG
 SPNKYWNSSTATSLCNIFRGSYLAGASLIYTVTRNAGLVKRR

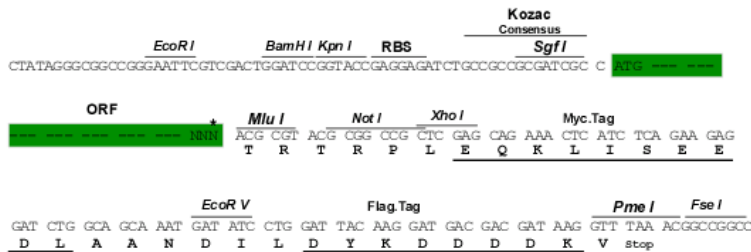
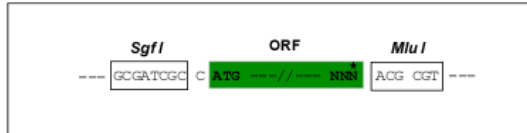
TRTRPLEQKLISEEDLAANDILDYKDDDDKV

Chromatograms: https://cdn.origene.com/chromatograms/ja3659_e12.zip

Restriction Sites: SgfI-MluI

Cloning Scheme:

Cloning sites used for ORF Shuttling:



* The last codon before the Stop codon of the ORF

ACCN: NC_012532

ORF Size: 756 bp

OTI Disclaimer: Due to the inherent nature of this plasmid, standard methods to replicate additional amounts of DNA in E. coli are highly likely to result in mutations and/or rearrangements. Therefore, OriGene does not guarantee the capability to replicate this plasmid DNA. Additional amounts of DNA can be purchased from OriGene with batch-specific, full-sequence verification at a reduced cost. Please contact our customer care team at custsupport@origene.com or by calling 301.340.3188 option 3 for pricing and delivery.

The molecular sequence of this clone can be viewed by clicking the "ORF Nucleotide Sequence" link above. This sequence represents the NCBI reference after codon optimization for human cell expression, and retaining the same decoded protein sequence. The stop codon in the native sequence was removed to create the in-frame c-terminal fusion with a Myc-DDK tag.

Components: The ORF clone is ion-exchange column purified and shipped in a 2D barcoded Matrix tube containing 10ug of transfection-ready, dried plasmid DNA (reconstitute with 100 ul of water).

Reconstitution Method:

1. Centrifuge at 5,000xg for 5min.
2. Carefully open the tube and add 100ul of sterile water to dissolve the DNA.
3. Close the tube and incubate for 10 minutes at room temperature.
4. Briefly vortex the tube and then do a quick spin (less than 5000xg) to concentrate the liquid at the bottom.
5. Store the suspended plasmid at -20°C. The DNA is stable for at least one year from date of shipping when stored at -20°C.

RefSeq: [NC_012532.1](#), [YP_009227204](#)

RefSeq ORF: 756 bp

MW: 27.1 kDa