

Product datasheet for **VC102494**

HE (NC_006310) Virus Tagged ORF Clone

Product data:

Product Type:	Expression Plasmids
Product Name:	HE (NC_006310) Virus Tagged ORF Clone
Tag:	Myc-DDK
Symbol:	HE
Mammalian Cell Selection:	Neomycin
Vector:	pCMV6-Entry (PS100001)
E. coli Selection:	Kanamycin (25 ug/mL)



[View online »](#)

ORF Nucleotide
Sequence:

>The Viral ORF clone VC102494 represents NCBI reference of YP_089655 with codon optimized for human cell expression

Red=Cloning site Blue=ORF Green=Tags(s)

GACGTTGTATACGACTCCTATAGGGCGGCCGGAATTCGTCGACTGGATCCGGTACCGAGGAGATCTGCC
GCC**CGGATCGCC**

ATGTTCTTCAGCCTGCTGCTCATGCTGGCCTGACTGAGGCTGAAAAGATCAAAATCTGCCTGCAGAAAC
AGGTCAACAGCAGCTTCTCCCTGCACAATGGCTTTGGGGGAAACCTGTACGCCACCGAGGAAAAGCGGAT
GTTTGAGCTGGTCAAGCCCAAAGCCGGAGCCAGCGTGCTCAACCAGTCCACCTGGATCGGCTTCGGAGAT
AGCCGGACCGACAAGTCCAACAGCGCCTTCCCACGGTCCGCCGACGTGAGCGCAAAGACCGCTGACAAAT
TTCGGAGCCTGTCGGCGGAAGCCTCATGCTGAGCATGTTCCGACCCCTGGCAAGGTGGACTACCTGTA
CCAGGGCTGCGGCAAGCACAAGGTGTTCTACGAAGGCGTCAACTGGTCCCCCACGCCCATCACTGC
TACCGGAAAACTGGACCGACATTAAGTGAATTCAGAGAACAATCTACGAGCTCGCCAGCCAGTCCC
ACTGCATGTCCTCGTGAATGCCCTGGACAAGACCATCCCCTGCAGGCCACCGTGGCGTGGCCAAAGAA
CTGCAACAACAGCTTTCTCAAGAACCCCGCCTCTACACCCAGGAGGTGAACCCAGCGTCGAGAAGTGC
GGAAAGGAGAACCTCGCCTTCTTCACTCTGCCACCCAGTTTGGCACCTACGAGTGAAGCTGCACCTGG
TGGCTAGCTGTTACTTCTACGACAGCAAGGAGGTCTACAACAAGCGGGGCTGCGACAACACTTCCA
GGTGATTTACGACAGCAGCGGCAAAGTGGTGGGCGGGCTCGACAACCGGGTCAGCCCTACACCGGCAAC
TCCGGCGACACCCCAACATGCAGTGGCAGATGCTCCAGCTCAAGCCCGGGCGGTATAGCGTCCGGAGCA
GCCCCCGTTCGCTCATGCCGAGCGGAGCTATTGCTTCGACATGAAAGAGAAGGGCCCCGTGACCGC
CGTGCAAAGCATCTGGGGCAAAGCCGGGAAAGCGACACGCCGTGGACCAGGCCCTGCCTGAGCACCCCC
GGCTGCATGCTGATTGAGAAGCAGAAGCCCTACATTGGGGAGGCAGACGACCACCGGGCAGCAGGAGA
TGCGGGAGCTGCTGAGCGCCTGGACTACGAGGCACGGTGTATCAGCCAGTCCGGATGGGTGAACGAGAC
CTCCCCCTTACAGAGGAGTACCTGCTGCCCCCAAGTTTGGCCGGTGGCCCTGGCCGCAAAAGAGGAA
AGCATCCCAAGATCCCAGACGGCCTCCTATTCCCACAGCGGGACCGACACCACCGTCAACAAGCCTA
AGAGCCGATTTTCGGCATCGACGACCTCATCATCGGGCTGCTGTTCTGGCCATCGTGGAGGCCGGCAT
TGGCGGTATCTGCTCGGCAGCCGGAAGGTGAGCGGGGGCGGCTGACCAAGGAGAGCGCCGAGAAGGGC
TTCGAGAAAATCGGCAACGATATCCAGATTCTGCGGTCTCCACCAACATCGCCATCGAGAAGCTGAACG
ACCGGATCAGCCACGACGAGCAGGCCATCCGGGACCTGACCTGGAATCGAGAACGCCCGGAGCGAGGC
CCTCCTCGGCAGCTGGGCATCATCCGGGCCCTGCTGGTGGGCAACATTTCCATCGGGCTGCAAGAGTCC
CTGTGGGAGCTCGCCAGCGAGATCACCACCGGGCCGGCGACCTGGCCGTGGAGGTCTCCCCCGCTGCT
GGGTATCGACAACAATCTGCGACCAGAGCTGCCAGAATTTATCTTCAAGTTAACGAAACCGCCCC
CGTCCCCACCATCCCCCCTCGACACAAAGATCGATCTCGAGAGCGACCCCTTCTACTGGGGCAGCAGC
CTGGGCTGGCTATCACCAGCCATCAGCCTCGCCGCTGGTGTATCAGCGGGATTGCTATCTGTCGGA
CTAAG

ACGCGTACGCGGGCGCTCGAGCAGAACTCATCTCAGAAGAGGATCTGGCAGCAATGATATCTGGATT
ACAAGGATGACGACGATAAGGTTTAA

Protein Sequence: >VC102494 representing YP_089655
 Red=Cloning sites Green=Tags

MFFSLLLMLGLTEAEKIKICLQKQVNSSFSLHNGFGGNLYATEEKRMFELVKPKAGASVLNQSTWIGFGD
 SRTDKSNSAFPRADVSAKTADKFRSLSGGSLMLSMFGPPGKVDYL YQCGCHKVFYEGVNWSPHAAINC
 YRKNWTDIKLNFQKNIYELASQSHCM SLVNALDKTIPLQATAGVAKNCNNSFLKNPALYTQEVNPSVEKC
 GKENLAFFTLPTQFGTYECKLHLVASCYFYDYSKEVYNKRGCDNYFQVIYDSSGKVVGGLDNRVSPYTG
 SGTPTMQCDMLQLKPGRYSVRSPRFLMLPERSYCFDMKEKGPVTAVQSIWKGRESHVAVDQACLSTP
 GCMLIQKQKPYIGEADDDHHDQEMRELLSGLDYEARCISQSGWVNETSPFTEEYLLPPKFGRCPLAAKEE
 SIPKIPDGLLIPTSGTDTTVTKPKSRIFGIDDLIIGLLFVAIVEAGIGGYLLGSRKVS GGVTKESA EKG
 FEKIGNDIQILRSSTNIAIEKLNDRISHDEQAIRDLTLEIENARSEALLGELGIIRALLVGNISIGLQES
 LWELASEITNRAGDLAVEVSPGCWVIDNNICDQSCQNFIFKFNETAPVPTIPPLDTKIDLQSDPFYWGSS
 LGLAITAAISLAALVISGIAICRTK

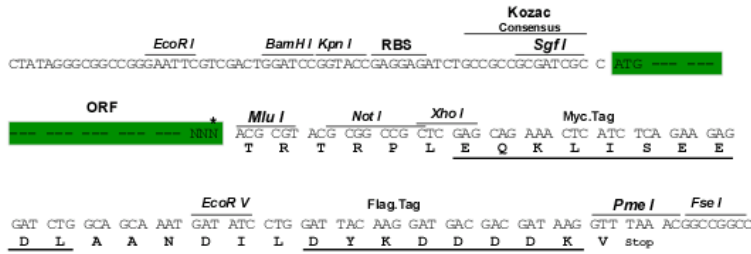
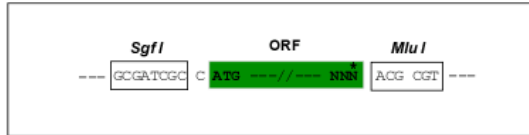
TRTRRLEQKLI SEEDLAANDILDYKDDDDKV

Chromatograms: https://cdn.origene.com/chromatograms/ja3124_f01.zip

Restriction Sites: SgfI-MluI

Cloning Scheme:

Cloning sites used for ORF Shuttling:



* The last codon before the Stop codon of the ORF

ACCN: NC_006310

ORF Size: 1965 bp

OTI Disclaimer: Due to the inherent nature of this plasmid, standard methods to replicate additional amounts of DNA in E. coli are highly likely to result in mutations and/or rearrangements. Therefore, OriGene does not guarantee the capability to replicate this plasmid DNA. Additional amounts of DNA can be purchased from OriGene with batch-specific, full-sequence verification at a reduced cost. Please contact our customer care team at custsupport@origene.com or by calling 301.340.3188 option 3 for pricing and delivery.

The molecular sequence of this clone can be viewed by clicking the "ORF Nucleotide Sequence" link above. This sequence represents the NCBI reference after codon optimization for human cell expression, and retaining the same decoded protein sequence. The stop codon in the native sequence was removed to create the in-frame c-terminal fusion with a Myc-DDK tag.

Components: The ORF clone is ion-exchange column purified and shipped in a 2D barcoded Matrix tube containing 10ug of transfection-ready, dried plasmid DNA (reconstitute with 100 ul of water).

Reconstitution Method:

1. Centrifuge at 5,000xg for 5min.
2. Carefully open the tube and add 100ul of sterile water to dissolve the DNA.
3. Close the tube and incubate for 10 minutes at room temperature.
4. Briefly vortex the tube and then do a quick spin (less than 5000xg) to concentrate the liquid at the bottom.
5. Store the suspended plasmid at -20°C. The DNA is stable for at least one year from date of shipping when stored at -20°C.

RefSeq: [NC_006310.1](#), [YP_089655](#)

RefSeq ORF: 1965 bp

Locus ID: 3077359

MW: 72.0 kDa