

## Product datasheet for **VC102447**

### HA (NC\_007374) Virus Tagged ORF Clone

#### Product data:

Product Type:	Expression Plasmids
Product Name:	HA (NC_007374) Virus Tagged ORF Clone
Tag:	Myc-DDK
Symbol:	HA
Mammalian Cell Selection:	Neomycin
Vector:	pCMV6-Entry (PS100001)
E. coli Selection:	Kanamycin (25 ug/mL)



[View online »](#)

**ORF Nucleotide Sequence:**

>The Viral ORF clone VC102447 represents NCBI reference of YP\_308850 with codon optimized for human cell expression

Red=Cloning site Blue=ORF Green=Tags(s)

GACGTTGTATACGACTCCTATAGGGCGGCCGGAATTCGTCGACTGGATCCGGTACCGAGGAGATCTGCC  
GCC**CGCATCGCC**

ATGGCTATCATTTACCTCATCTGCTGTTTACCGCGTAAGAGGTGACCAGATCTGCATCGGCTATCAGC  
CGAACACAGTACCGAAAAGGTGGACACTATATTGGAGCGAAACGTGACCGTGACACATGCTAAAGATAT  
CCTGGAGAAAACCCATAATGGGAAATTGTGAAGCTCAATGGTATCCCCCCTCGAATTGGGGACTGT  
AGCATCGCCGGCTGGCTCCTGGGAACCCTGAATGTGACAGGCTCCTCTCCGTGCCTGAGTGGAGCTATA  
TCATGGAGAAGGAAAATCCAGTACTCTCTTTGCTACCCCGTTCAATTAACGATTATGAAGAACTTAA  
GCACCTTCTTAGCTCTGTGAAGCACTTTGAAAAGGTAAGATTCTGCCAAAAGACCGGTGGACACAGCAT  
ACTACTACGGGAGGCTCCTGGCGTGCCTGTGACGGCAAGCCAGCTTCTTTGCAATATGGTGTGGC  
TGACAAGAAAAGGTCAAATTACCTGTGGCCAAGGGCTTTATAATAACACCTCTGGGGAACAGATGTT  
GATCATCTGGGGAGTGCATCACCTAATGACGAGGCCGAGCAGAGAGCCTTGTACCAAAATGTAGGCACA  
TATGTATCAGTTGCTACCTCACTCTCTACAAGAGGAGTATCCCCGAGATTGCTGCAAGGCCATAAGTGA  
ATGGCCTCGGCCGAGGATGGAATTTAGTTGGACCTTGTGGATATGTGGGACACAATTAACCTTTGAGTC  
AACTGGCAATCTGGTGGCACCGGAATACGGCTTCAAGTCTCAAAGCGGGGTTCTCAGGCATCATGAAG  
ACGGAAGTACTCTGAAAACCTGTGAGACCAAGTGCCAACTCCTCTGGGAGCGATAAATACCACCTCC  
CGTCCACAATGTGACCCCTCACAATGGGGAAATGTCCAAGTACGTGAAATCCGAAAACCTTGTCCT  
GGCTACCGGCTCAGGAACGTGCCAGATCGAAAAGCAGGGGTTGTTGCGAGCGATTGCAGGGTTTATT  
GAGGGCGGCTGGCAGGGAATGGTCGACGGCTGGTATGGATACCATCATAGCAATGACCAGGTAGTGGCT  
ATGCTGCCGATAAAGAGAGCACCCAGAAGGCCTTTAACGGAATCACAACAAAGTCAATTCAGTGATCGA  
AAAGATGAACACACAATTCGAAGCGTGGGCAAAGAGTTTTCAAACCTCGAGAAACGCTGGAGAACCCTC  
AACAGAAGATGGAAGATGGATTCTCGACGTATGGACCTATAATGCGGAACTCCTTGTACTGATGGAGA  
ACGAAAGGACGCTGGACTTCCATGACTCCAATGTCAAAAACCTGTACGACAAAAGTTAGAATGCAGCTGCG  
CGACAATGTGAAGGAGCTGGCAATGGGTGCTTTGAATCTACCACAAGTGTGATAATGAGTGTATGGAC  
TCAGTCAAAAATGGAACATATGACTACCCCAAATATGAGGAAGAGAGCAAGTTGAATAGGAACGAGATTA  
AAGGGTCAAGTTGTCTCAATGGGGTGTACCAGATTCTGGCCATCTACGCAACTGTTGCAGGAAGCCT  
CAGTCTGGCTATCATGATGGCAGGAATCAGCTTCTGGATGTGCTCTAACGGCTACTCCAGTGCAGGATT  
TGCATC

**ACGCGT**ACGCGGCCGCTCGAGCAGAAACTCATCTCAGAAGAGGATCTGGCAGCAAATGATATCCTGGATT  
ACAAGGATGACGACGATAAGGTTTAA

**Protein Sequence:**

>VC102447 representing YP\_308850

Red=Cloning sites Green=Tags

MAIYYLILLFTAVRGDQICIGYHANNSTEKVDTILERNVTVTHAKDILEKTHNGKLCCLNGIPPELGDG  
SIAGWLLGNPECDRLLSVPEWSYIMEKENPRYSLCYPGSFNDYEELKHLSSVKHFKEVKILPKDRWTQH  
TTTGGSWACAVSGKPSFFRNMVWLTRKGSNYPVAKGSYNNTSGEQMLIIWGVHHPNDEAEQRALYQNVGT  
YVSVATSTLYKRISPEIAARPKVNLGRRMEFSWTLDDMWDITINFESTGNLVAPEYGFKISKRGSSGIMK  
TEGTLENCETKCQTPLGAINITLPHFNVHPLTIGECPKYVKSEKLVLATGLRNVQIESRGLFGAIAAGFI  
EGGWQGMVDGWYGYHHSNDQSGYAADKESTQKAFNGITNKVNSVIEKMNTQFEAVGKEFSNLEKRENL  
NKKMEDGFLDVWTYNAELLVLMENERTLDFHDSNVKNLYDKVRMQLRDNVKELGNGCFEFYHKCDNECMD  
SVKNGTYDPKYEEEEKLNREIKGVKLSMGMVYQILAIYATVAGSLSLAIMMAGISFWMCSNGLSQCRI  
CI

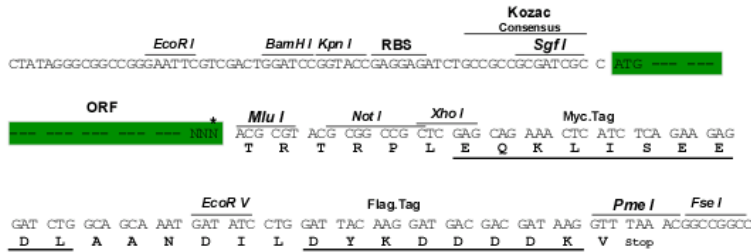
**TR**TRRLEQKLISEEDLAANDILDYKDDDDKV

**Restriction Sites:**

SgfI-MluI

**Cloning Scheme:**

Cloning sites used for ORF Shuttling:



\* The last codon before the Stop codon of the ORF

**ACCN:** NC\_007374

**ORF Size:** 1686 bp

**OTI Disclaimer:** The molecular sequence of this clone can be viewed by clicking the "ORF Nucleotide Sequence" link above. This sequence represents the NCBI reference after codon optimization for human cell expression, and retaining the same decoded protein sequence. The stop codon in the native sequence was removed to create the in-frame c-terminal fusion with a Myc-DDK tag.

**Components:** The ORF clone is ion-exchange column purified and shipped in a 2D barcoded Matrix tube containing 10ug of transfection-ready, dried plasmid DNA (reconstitute with 100 ul of water).

**Reconstitution Method:**

1. Centrifuge at 5,000xg for 5min.
2. Carefully open the tube and add 100ul of sterile water to dissolve the DNA.
3. Close the tube and incubate for 10 minutes at room temperature.
4. Briefly vortex the tube and then do a quick spin (less than 5000xg) to concentrate the liquid at the bottom.
5. Store the suspended plasmid at -20°C. The DNA is stable for at least one year from date of shipping when stored at -20°C.

**RefSeq:** [NC\\_007374.1, YP\\_308850](#)
**RefSeq ORF:** 1686 bp

**Locus ID:** 3655103

**MW:** 63.3 kDa