

Product datasheet for **VC102443**

NA (NC_007382) Virus Tagged ORF Clone

Product data:

Product Type:	Expression Plasmids
Product Name:	NA (NC_007382) Virus Tagged ORF Clone
Tag:	Myc-DDK
Symbol:	NA
Mammalian Cell Selection:	Neomycin
Vector:	pCMV6-Entry (PS100001)
E. coli Selection:	Kanamycin (25 ug/mL)



[View online »](#)

ORF Nucleotide Sequence:

>The Viral ORF clone VC102443 represents NCBI reference of YP_308872 with codon optimized for human cell expression

Red=Cloning site Blue=ORF Green=Tags(s)

GACGTTGTATACGACTCCTATAGGGCGGCCGGAATTCGTCGACTGGATCCGGTACCGAGGAGATCTGCC
GCC**CGATCGCC**

ATGAATCCCAACCAAAAGATAATTACAATAGGCTCTGTGTCTTACTATCGCCACCGTGTGTTTTCTTA
TGCAGATCGCCATTCTGGTGACCACAGTACCCTGCACCTTAAGCAGCACGAATGTGATTCACCCGCCTC
AAATCAAGTGATGCCATGTGAGCCTATCATAATCGAGCGGAACATTACCGAGATCGTGTACTGAATAAT
ACAACATAGAGAAGGAAATCTGTCCGGAGGTCGTAGAGTACAGAACTGGTCTAAACCCAGTGTCAAA
TAACTGGTTTCGCGCCGTTTAGTAAGGATAACTCCATTAGGTTGTCCGCGGGTGGAGACATTTGGTTAC
CCGAGAGCCCTACGTGAGTTGTGACCCCGCAATGCTACCAGTTCGCACTTGGACAGGGAACACTCTG
GATAATAAACATTCCAACGATACTATTCATGATCGCATTCCGCACCGCACCTTCTGATGAACGAACCTGG
GTGTCACATTTACCTGGGAACAGGCAGGTTTGTGTAGCATGGTCTAGCAGCTTGTGCACGATGGGAA
GGCCTGGCTGCATGTGTGCGTACTGGTGACACAAGAATGCTACAGCATATTTATATACGATGGCGCG
CTCATGGATTCAATTGGGTCTTGAGGCCAAAATATCCTTAGAACCCAGGAGTCAGAGTGCCTGTGTATCA
ACGGGACTTGCACCGTGGTAATGACAGATGGTTCGCATCCGGACGGGCCGACACCCGCATCCTTTTTAT
CGAAGAAGGCAAGATCGTGACATTTCCCCCTGTGAGGCTCCGCGCAGCATGTAGAGGAGTGTAGTTGT
TACCCAAGGTACCCAGACGTGAGGTGCATTTGCAGAGACAATTGGAAAGGGAGTAACAGACCAGTAATCG
ATATCAATATGGAGGACTACTCAATCGACTCCTCCTACGTTTGTGCTAGGGCTGGTGGGTGACACCCGAG
GAATGATGACCGGAGCTTAACCAAACTGTGAAATCCTAACAATGAAAGAGGAAATCCAGGCGTGAAA
GGCTGGCCCTTCGACAACGGTGACGATGTGTGGATGGGCCGACGATTTCTAAGGACCTGAGGTCAGGAT
ACGAAACCTTTAAAGTCATTGGCGGGTGGAGCACTCCCAACAGCAAGTCACAAATTAACCGCCAAGTCAT
CGTAGACTCCAATAATTGGTCAGGTTATAGCGAATTTTCAGCGTTGAGGCAAGCGGTGCATTAACAGA
TGTTTTATGTCGAGTTGATCAGGGCCGGCAGCAGGAACTCGGGTGTGGTGGACATCTAATAGCATTG
TTGTGTTCTGCGGCACTCCGGAACGTACGGTACTGGATCCTGGCCCGATGGAGCCAACATTAATTTTAT
GCCAATT

ACGCGTACGCGGCCGCTCGAGCAGAACTCATCTCAGAAGAGGATCTGGCAGCAATGATATCCTGGATT
ACAAGGATGACGACGATAAGGTTTAA

Protein Sequence:

>VC102443 representing YP_308872

Red=Cloning sites Green=Tags

MNPNQKIITIGSVSLTIATVCFMQIAILVTTVTLHFKQHECDSPASNQVMPCEPIIIERNITEIVYLLN
TTIEKEICPEVVEYRNWSKPCQITGFAPFSKDNSIRLSAGGDIWVTREPYVSCDPGKCYQFALGQGTLL
DNKHSNDTIHDRIPHRTLLMNELGVPFHLGTRQVCVAWSSSCHDGKAWLHVCVTGDDKNATASFYDGR
LMDSIGSWSQNILRTQESECVCINGTCTVMTDGSASGRADTRILFIEEGKIVHISPLSGSAQHVEECSC
YPRYPDVRICRDNWKGSNRPVIDINMEDYSIDSSYVCSGLVGDTPRNDDRSSNSNCRPNNERGNPGVK
GWAFFDNGDDVWMGRTISKDLRSGYETFKVIIGWSTPNSKQINRQVIVDSNNWSGYSGIFSVEGKRCINR
CFYVELIRGRQETRVWWTNSIIVVFCGTSPTYGTGSWPDGANINFMPI

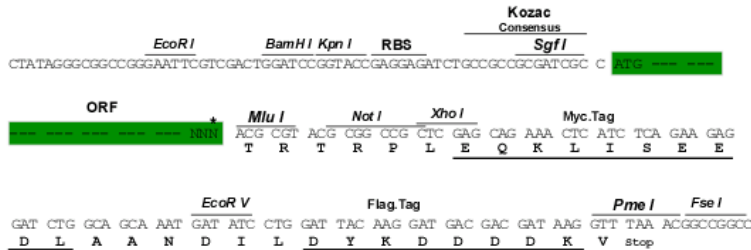
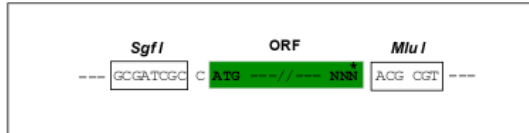
TRTRRLEQKLISEEDLAANDILDYKDDDDKV

Restriction Sites:

Sgfl-MluI

Cloning Scheme:

Cloning sites used for ORF Shuttling:



* The last codon before the Stop codon of the ORF

ACCN: NC_007382

ORF Size: 1407 bp

OTI Disclaimer: The molecular sequence of this clone can be viewed by clicking the "ORF Nucleotide Sequence" link above. This sequence represents the NCBI reference after codon optimization for human cell expression, and retaining the same decoded protein sequence. The stop codon in the native sequence was removed to create the in-frame c-terminal fusion with a Myc-DDK tag.

Components: The ORF clone is ion-exchange column purified and shipped in a 2D barcoded Matrix tube containing 10ug of transfection-ready, dried plasmid DNA (reconstitute with 100 ul of water).

Reconstitution Method:

1. Centrifuge at 5,000xg for 5min.
2. Carefully open the tube and add 100ul of sterile water to dissolve the DNA.
3. Close the tube and incubate for 10 minutes at room temperature.
4. Briefly vortex the tube and then do a quick spin (less than 5000xg) to concentrate the liquid at the bottom.
5. Store the suspended plasmid at -20°C. The DNA is stable for at least one year from date of shipping when stored at -20°C.

RefSeq: [NC_007382.1, YP_308872](#)
RefSeq ORF: 1407 bp

Locus ID: 3655112

MW: 52.3 kDa