

Product datasheet for **VC102409**

ORF119L (NC_003494) Virus Tagged ORF Clone

Product data:

Product Type:	Expression Plasmids
Product Name:	ORF119L (NC_003494) Virus Tagged ORF Clone
Tag:	Myc-DDK
Symbol:	ORF119L
Mammalian Cell Selection:	Neomycin
Vector:	pCMV6-Entry (PS100001)
E. coli Selection:	Kanamycin (25 ug/mL)



[View online »](#)

ORF Nucleotide Sequence:

>The Viral ORF clone VC102409 represents NCBI reference of NP_612341 with codon optimized for human cell expression
 Red=Cloning site Blue=ORF Green=Tags(s)

GACGTTGTATACGACTCCTATAGGGCGGCCGGAATTCGTCGACTGGATCCGGTACCGAGGAGATCTGCC
 GCC**CGATCGCC**

ATGCCAGTGCATGGGTGCGTGGTTACAAAAAGCAATAATGTGCCCCAGAAGATGGCCTCACACTTTAGCT
 TCGCCGCCACAGGTGACGCCGACAGACTGTTGTGGCCATCCGGTATGATACTAGTATGGCACTGACGAT
 GCTGCGGCAGGGTCAGAGCCCCAACATACACAACGGTGTCACTGCCCCTGATGGCCGACGCCAACAC
 AACAAACAGTGTATGGCTATGATGAGGCATCCCGAATTGACCTGAACGCAGCCGATAGCGACGGAA
 ACACGGTCTTACATGTGCTGTCGCTGGGTTCAGTACACCCGGTTAAAGCTCTTCTGGCCGACGGGC
 TAACGTAGACCCTGTAACAAGGAAGGCAAGACACCCTGATGTACGCACTCCACTCCAAGATTACGTT
 CACCTGCTCATCAACATGGAGCAGACCAATCACAAAGTCACTCTAATCATAGTGCCTTTACCACC
 TGTTCTCTTACCTGAGACCCGAAATTCTAATTTCAAGCACCTCGTTACATACCAATCATGGCTCACT
 GCTGTATTCACCCACCGGCTGGACCGCATATCTACCGATGACCTGCGGGCCGTGATTTCTTGCGAAGAC
 GTCGCACCCAGTGCCTGAGTGACATCCTGACCGCTCCTCATATTGATATGGGCTACGGCAACCACGATA
 CTGATGCACTGTGCTGGGCCCGCGTGGTGGCAACCTGGAGGCTATGAAAACCTCTGATCCACCAATTCCA
 GTACGACGTAATGGCGAACTCCGCGTCCCTGCTCTCCGCCGCTATTACGGACGATGCCACTGCCCTGCC
 GTGTTCCCATTCGTTCTCGAACAGTGGCAGCTGGATGCCCTGCAGGAGAACGGAGATTCCGCGTTGAGCC
 TCGCACTCAAAGAACTGCATGTATTGCGCCCGCGCTCTGGTGGCAACAATGTTGGAATCCACGTGGA
 CAGCCCCAGGCCTTGGACCGGCTTCTCCGGCCATCATGACCTGTCAGGATATCGAACTGGTCCGCTCA
 CTGGTACGGCATAACGATATAGACCTCGTTCATAGACCACTCTCCCGATGGACTACACCCCTTCAGT
 TTGCAGCTACTCATATTCACGGCGTCGAGTAGACTTTCTCATGGCTTTCATGGCAACGGTGTCCAGC
 CCAGGGGATTGTGCCATGTCCACCATCCCCCCTCTTCCATAATGTTCCCTCACTGTTGGTTGAATAT
 AACTCCATAACAACCTCCGGTCTATGGCCGCAAGATTGATCCCTGAGGATATGTCACACATTACCA
 CCGAAATGGTGTGAATACCAACAGAACACTCGCCGC

ACGCGTACGCGGCCGCTCGAGCAGAACTCATCTCAGAAGAGGATCTGGCAGCAATGATATCCTGGATT
 ACAAGGATGACGACGATAAGGTTTAA

Protein Sequence:

>VC102409 representing NP_612341
 Red=Cloning sites Green=Tags

MPVHGCVVTKSNNVPQKMASHFSFAATGDADRLWLAIKYDTSMLTMRQGGSPNIHNGVTTALMAAAQH
 NNTVFMAMMRHPGIDLNAADSDGNTVLHMCCRWVQYTRVKALLAAGANVDPVNKEGKTPLMYALHSKSYV
 HLLIQHGADTNHKDHSNHSVL YHLFSSPETRNSNFKHLVTYPIMAQLLYSPTGLDRISTDDLRAVISCED
 VAPQCLSDILTAPHIDMGYGNHDTDAVCWAAVVGNL EAMKTLIHQFYDVMANSASLLSAAITDDATAPA
 VFPFVLEQCDVDALQENGDSALSLALQRNMYCARALVANNVGIHVDSQALDRLLRAIMTCDIELVRS
 LVRHTDIDL VHRAILPDGLTPLQFAATHIHGVDVDFLMAFMATVFPAQGI VPMSTIPPLFHNVPSSLVEY
 NSHNNLRSMARFVSPEDMSHITTEMVLNTKQNTRR

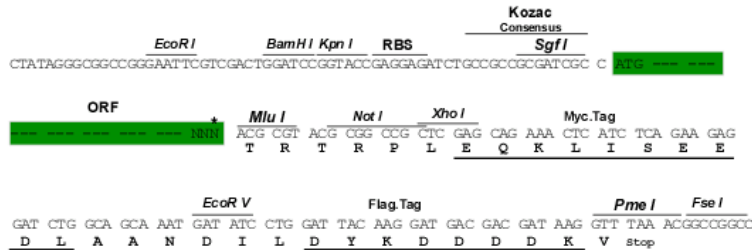
TRTRRLEQKLISEEDLAANDILDYKDDDDKV

Restriction Sites:

Sgfl-MluI

Cloning Scheme:

Cloning sites used for ORF Shuttling:



* The last codon before the Stop codon of the ORF

ACCN: NC_003494

ORF Size: 1368 bp

OTI Disclaimer: The molecular sequence of this clone can be viewed by clicking the "ORF Nucleotide Sequence" link above. This sequence represents the NCBI reference after codon optimization for human cell expression, and retaining the same decoded protein sequence. The stop codon in the native sequence was removed to create the in-frame c-terminal fusion with a Myc-DDK tag.

Components: The ORF clone is ion-exchange column purified and shipped in a 2D barcoded Matrix tube containing 10ug of transfection-ready, dried plasmid DNA (reconstitute with 100 ul of water).

Reconstitution Method:

1. Centrifuge at 5,000xg for 5min.
2. Carefully open the tube and add 100ul of sterile water to dissolve the DNA.
3. Close the tube and incubate for 10 minutes at room temperature.
4. Briefly vortex the tube and then do a quick spin (less than 5000xg) to concentrate the liquid at the bottom.
5. Store the suspended plasmid at -20°C. The DNA is stable for at least one year from date of shipping when stored at -20°C.

RefSeq: [NC_003494.1](#), [NP_612341](#)
RefSeq ORF: 1368 bp

Locus ID: 935320

MW: 50.2 kDa