

## Product datasheet for **VC102392**

### ORF102R (NC\_003494) Virus Tagged ORF Clone

#### Product data:

|                           |  |
|---------------------------|--|
| Product Type:             | Expression Plasmids                        |
| Product Name:             | ORF102R (NC_003494) Virus Tagged ORF Clone |
| Tag:                      | Myc-DDK                                    |
| Symbol:                   | ORF102R                                    |
| Mammalian Cell Selection: | Neomycin                                   |
| Vector:                   | pCMV6-Entry (PS100001)                     |
| E. coli Selection:        | Kanamycin (25 ug/mL)                       |



[View online »](#)

**ORF Nucleotide Sequence:**

>The Viral ORF clone VC102392 represents NCBI reference of NP\_612324 with codon optimized for human cell expression  
 Red=Cloning site Blue=ORF Green=Tags(s)

GACGTTGTATACGACTCCTATAGGGCGGCCGGAATTCGTCGACTGGATCCGGTACCGAGGAGATCTGCC  
 GCC**CGATCGCC**

ATGGCAGCGAACCCAGACCATCGCCTTACCCCAAGGCACCCAGCACTCCAACGGGATGCTGCAGCAGCTCA  
 TTTTCAGCGATGGGACCTGGAAGGTACAAATCACCGCATGGTATTTGTAACACAGGGACCGTGCACGT  
 TATGTACAGGGTGGTTACCGTCCCCCAATCTCAGGTGTGCGATGCGCCCGCTTTTTCGCTGACTGCCAGA  
 TGGGGGGCTCTCAAGGCGGTGCTGCTCCCACGGACCTGCATGGGACCCGCCACATGCTGCGGGTTACAG  
 CTGCGGGAGTCTCAGTCATTAGAGCCGTCGGCGCCACAGAAGCCACATGGCGCTGGATGGAGACCTGAT  
 GGAGTGGTGTGTGAGCCTCCGTATGTTACATAACCGCTGTACCATCGCAGTGGTGTACGGGACAGCTGAT  
 CAGTTGCACTTGGATTGTATGATGCCACTCTACCTGAACATGGTCACTGATCCCAACAGGCCCGACGATG  
 ACGGCGTCACCCATTGATGCATGCAATTCGGAACAAATGTGCTTACGTCCTGAAACGCTTGTGTATGC  
 ACATTGTGTGGACGTGACCGTCGCCGACAATCAGGGAAGGACTGCATTGCACTGGGCACTGCTGTGGGAC  
 CAGACTCTGGCCGGCAACTGATGTCACGCGGAGCGAGTGTGAACGTGGGAGGTACGTGCACCCCTATGG  
 ACATGATTTTTACAGGACCTGATTCAGGTACCGCGCCGCAATGGCCCTTACTTTGATGGCTTCAATGGA  
 ACCTCTTCGGATGAGCGGGCAACCCCTTAGGCTGGTCAAGGCAATGCCCCAGCTCGCAAATACAATG  
 CTTCTTAGGGGCGTAACCGACAAAGACGCCATCGTGACGAAATGTGTAGATACGGTTACACTAGTCTTT  
 TCCACTTTACGCTCAGGACATGCCAGGCTCCCCACATCTGCACATCGCCTGCCTCTCTATGACCTA  
 CACCGATTGCGCCGAGTGCACAAATCTAGGGGAGCTTACGAGAAGGCCAGTGTGCAATCTGCGGGAG  
 CTTTCGGCAAGAGTATAACTATGATATCAACGCATTGGATAGACTGGGAAATGCGGCTTGTGGTATGCTT  
 TGCGGAATCGCAACTATCGTCTGCCAATATATGCTCCGCCACAAAATAGGGCTTGGAGCACGGCGGGC  
 TCAGTGTGTCGATGAAATGAGTGTATGATTTCTCTGCGAAGACCCTAAGACTATCACCTTGTGGTGGC  
 CGCCGCTTCGACCTGGATAAGCACGTGTGGTTCGCGGGGAAACTCAGAACCCCATATCACCACTACAAAG  
 AGATGGCCGAGGGCAATGCAGTATTTACCGCTTACGTGCTGAATCACGTGTTGGCAATTGACTCAGGAAA  
 GACCTCCAAACCTTGGTCACTGACATGCGTCCGCGGAACA

**ACGCGT**ACGCGGCCGCTCGAGCAGAAACTCATCTCAGAAGAGGATCTGGCAGCAAATGATATCCTGGATT  
 ACAAGGATGACGACGATAAGGTTTAA

**Protein Sequence:**

>VC102392 representing NP\_612324  
 Red=Cloning sites Green=Tags

MAANQTI AFTPRHQHSNGMLQH VIFSDGTWKCTITGMVFVTTGTVHVMYRVVTVPPISGVR CARFCVTAR  
 WGALKAVLLPRTCMPA HMLRVTAAGVSVIRAVGATEAHMALDGDLM EWVCEPPYVHN RCTIAVVYGTAD  
 QLHLDCM MPLYLNMVTD PNRPDDGVTPLMHAIRNKCA YVTERLLYAHCV DVTVADNQRTALHWAVLWD  
 QTLAGELMSRGASVNVGGTCTPMDMIF TGPDSGHRAAMAL TLMASMEPLRMSGATLRLVMRHMPQLANTM  
 LLRGVTDKDAIVTE MCRYGYSLFH SYAQDMPRLPPHLHIA CLSMTYTDCAAVHKSRGAYEKAQCAILRE  
 LRQEYNYDINALDRLGN CGLWYALRNRNTIVCQYMLRHKIGLEPRRAQCVD EMSVYAF LCEDPKTIITLFA  
 RRFDLDKHVWFAGKLRTPYHYKEMAEGNAVFTA YVLNHVLAIDSGKTSKPWSLTCVRGT

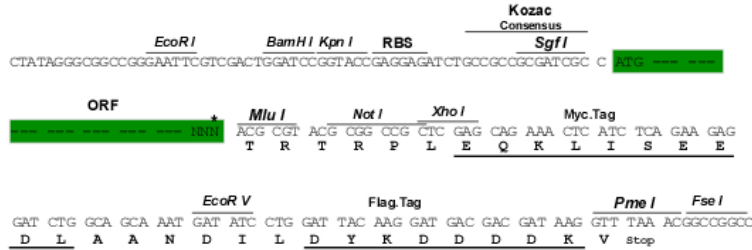
**TR**TRRLEQKLISEEDLAANDILDYKDDDDKV

**Restriction Sites:**

Sgfl-MluI

**Cloning Scheme:**

Cloning sites used for ORF Shuttling:



\* The last codon before the Stop codon of the ORF

**ACCN:** NC\_003494

**ORF Size:** 1440 bp

**OTI Disclaimer:** The molecular sequence of this clone can be viewed by clicking the "ORF Nucleotide Sequence" link above. This sequence represents the NCBI reference after codon optimization for human cell expression, and retaining the same decoded protein sequence. The stop codon in the native sequence was removed to create the in-frame c-terminal fusion with a Myc-DDK tag.

**Components:** The ORF clone is ion-exchange column purified and shipped in a 2D barcoded Matrix tube containing 10ug of transfection-ready, dried plasmid DNA (reconstitute with 100 ul of water).

**Reconstitution Method:**

1. Centrifuge at 5,000xg for 5min.
2. Carefully open the tube and add 100ul of sterile water to dissolve the DNA.
3. Close the tube and incubate for 10 minutes at room temperature.
4. Briefly vortex the tube and then do a quick spin (less than 5000xg) to concentrate the liquid at the bottom.
5. Store the suspended plasmid at -20°C. The DNA is stable for at least one year from date of shipping when stored at -20°C.

**RefSeq:** [NC\\_003494.1](#), [NP\\_612324](#)
**RefSeq ORF:** 1440 bp

**Locus ID:** 935375

**MW:** 53.7 kDa