

Product datasheet for VC102390

ORF100L (NC_003494) Virus Tagged ORF Clone

Product data:

Product Type: Expression Plasmids
Product Name: ORF100L (NC_003494) Virus Tagged ORF Clone
Tag: Myc-DDK
Symbol: ORF100L
Mammalian Cell Selection: Neomycin
Vector: pCMV6-Entry (PS100001)
E. coli Selection: Kanamycin (25 ug/mL)
ORF Nucleotide Sequence: >The Viral ORF clone VC102390 represents NCBI reference of NP_612322 with codon optimized for human cell expression
 Red=Cloning site Blue=ORF Green=Tags(s)

GACGTTGTATACGACTCCTATAGGGCGGCCGGAATTCGTCGACTGGATCCGGTACCGAGGAGATCTGCC
 GCC**CGATCGCC**

ATGATAAGCAACGGCTACTACACTCTGTGTATACTTGACCAGGAAGGGAGACTCGTGAACATGTTGATA
 ATGCATTAGACTGGGCCATAATACCGAATATACTATCGTCATCACAACCTCCACAAATCAGCTAGAGC
 CGACGCCACCGTTTTTATAGACAATAAGGACATAGGTACCTATAGAGTGGAGGCAACAATAAAATTTCA
 ATTGAATCCAAGGATGGGCGGCATCTTACTTTTTTAGCTCAAGCTCCGCAGAAGGGTCTGCCCGCGCC
 TTAGCAGCACCCATATCGGCCAGATTAGGGTTCAGGTACGCAAAGAAAGGATACAGGCAGACAGCGAGT
 GCCTATGCGGGTGGTGGCCGATTCCGGGGATGACGGAATCGAGGCCGACTGCTGCTCTAACGGTGGCACC
 GGACTCGGCGCCCTTCCCGCCAGCGGTTCTGGATGCATGTGAAATCGACACGGAGAGTCTATCTACC
 TCCTCGAAGCCAGGATGGTCTGCTGCCTGCTAGGCGATCTGTAGTACCCCTG

ACGCGTACGCGGCCGCTCGAGCAGAAACTCATCTCAGAAGAGGATCTGGCAGCAATGATATCCTGGATT
 ACAAGGATGACGACGATAAGGTTTAA

Protein Sequence: >VC102390 representing NP_612322
 Red=Cloning sites Green=Tags

MISNGYYTLCILDQEGRLVNYVDNAFRLGHNTEYITIVITNLHKSARADATVFIDNKDIGTYRVEANNKIS
 IESKDGRHLTFSSSSAEGSAAGLSSTHIGQIRVQVRKERDTGRQRVPMRVVADSGDDGIEADCCSNGGT
 GLGAPSRQRFVDACEIDTESAIYLLLEARMVLLPARRSVVPL

TRTRRLEQKLISEEDLAANDILDYKDDDDKV

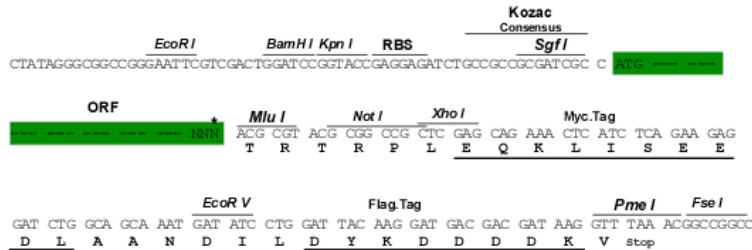
Restriction Sites: SgfI-MluI



[View online »](#)

Cloning Scheme:

Cloning sites used for ORF Shuttling:



* The last codon before the Stop codon of the ORF

ACCN: NC_003494

ORF Size: 543 bp

OTI Disclaimer: The molecular sequence of this clone can be viewed by clicking the "ORF Nucleotide Sequence" link above. This sequence represents the NCBI reference after codon optimization for human cell expression, and retaining the same decoded protein sequence. The stop codon in the native sequence was removed to create the in-frame c-terminal fusion with a Myc-DDK tag.

Components: The ORF clone is ion-exchange column purified and shipped in a 2D barcoded Matrix tube containing 10ug of transfection-ready, dried plasmid DNA (reconstitute with 100 ul of water).

- Reconstitution Method:**
1. Centrifuge at 5,000xg for 5min.
 2. Carefully open the tube and add 100ul of sterile water to dissolve the DNA.
 3. Close the tube and incubate for 10 minutes at room temperature.
 4. Briefly vortex the tube and then do a quick spin (less than 5000xg) to concentrate the liquid at the bottom.
 5. Store the suspended plasmid at -20°C. The DNA is stable for at least one year from date of shipping when stored at -20°C.

RefSeq: [NC_003494.1](#), [NP_612322](#)
RefSeq ORF: 543 bp

Locus ID: 935334

MW: 19.8 kDa