

Product datasheet for **VC102345**

ORF055L (NC_003494) Virus Tagged ORF Clone

Product data:

Product Type:	Expression Plasmids
Product Name:	ORF055L (NC_003494) Virus Tagged ORF Clone
Tag:	Myc-DDK
Symbol:	ORF055L
Mammalian Cell Selection:	Neomycin
Vector:	pCMV6-Entry (PS100001)
E. coli Selection:	Kanamycin (25 ug/mL)
ORF Nucleotide Sequence:	>The Viral ORF clone VC102345 represents NCBI reference of NP_612277 with codon optimized for human cell expression Red=Cloning site Blue=ORF Green=Tags(s)

GACGTTGTATACGACTCCTATAGGGCGGCCGGAATTCGTCGACTGGATCCGGTACCGAGGAGATCTGCC
GCC**CGATCGCC**

ATGCCGTCTACTACGTCCAAATGCAATCAGCTCAGAAACAATCGCTACACTGTTAACCCCGTGTCTAAC
GCGCAATCGCTCCAAGGGGCGATACCGCCAACACCCTGCGCCGAATTTGTGAACAGCCCCGGCTGTGCGC
TGAGTACAAGAGGTCTCCGAGATACAACCCATGGACTGATAGGACTCTGGCCCCAGGTTCTCCTAAACAT
AATCTGATCAGTGGCATGTGTGGCGGTTACGCTCCTAATTGGAGCCGCGAACGAGTGAGGACCAATAGAA
AGGCGCACAAAACCAACAGCAGACTCCAACGCGAGTGGCTTGAGACAGTCAACCGCCCCGGAGCCACGT
TCCACGCCGCGACGATGCCTGTGCCCTGTACTACGACGATCCGACGGTCAATCCCTTCACTGATGAACCA
TTGAGGCGGTATTCACCCATAGACGATCTTCTTTACCGGAACTGCGAGAGCGCCGAGATCAAGAGACGCC
AGTGTAGAGCCTTTGAAGAGAATCCTGATGTCAACCCTAACACTGGTAGGAGGATCAGCCCGACCGGGCC
GATCGCGTCAAGCATGCGCAGGAGGTGCATGAACTATAATGCCGTTCTATTAGCCGGTCTGAGGTGGG
CCTCGCGGGGGAAGGTCAATCGGCGTTAATACACCTTTTTCTGCCAATACTCCAACATCTCTGACACCC
AGTCATCAGGTTCCACAGAAGCATCGCTGTCAACACCCCATCTCCACTCAGCACATAGCCTGCTGGG
CACAATAAGCTCATCCAGCTCTGATAACAGCAGCCCCCGGCCAAGCGCGTCAAGCTGGGCGTGGG
CGAACCCCGGTGGCACTAAAAGGAGTCTGTGAGAGAAAGGGCCGAAATTATAGAAAATACTACTGCTT
CCCGGGGCGAGCAG

ACGCGTACGCGGGCGCTCGAGCAGAACTCATCTCAGAAGAGGATCTGGCAGCAAATGATATCCTGGATT
ACAAGGATGACGACGATAAGGTTTAA



Protein Sequence: >VC102345 representing NP_612277
Red=Cloning sites Green=Tags

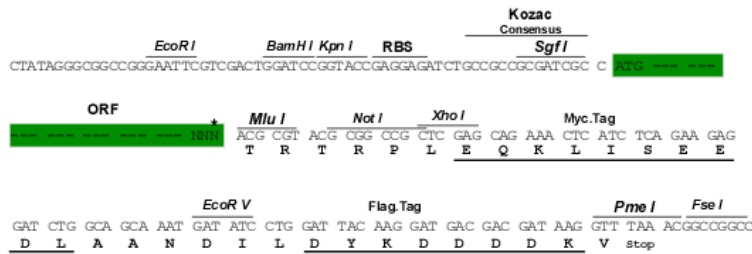
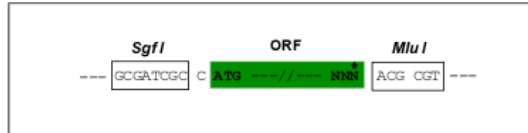
MPSTTSKCNQLRNNRYTVNPVSNRAIAPRGDTANTLRRICEQPRLCAEYKRSPRYNPWTDRTLAPGSPKH
 NLI SGMCGGYAPNWSRERVRTNRKAHKTNSRLQREWLETVNRPGAHVPRDDACALYYDDPTVNPFTDEP
 LRRYSPIDLLYRNCESAEIKRRQCRAFEENPDVNPNTGRRISPTGPIASSMRRRCMNYNAVPI SRSEVG
 PRGGRSIGVNTPF SANNNSI SDTQSSGSHRSIAVNTPSSHAHSL LGTISSSSDNSSPAGPSGVSVGVG
 RTPVALKRSPVRERAEI IENY TASRGQQ

TRTRRLEQKLISEEDLAANDILDYKDDDDKV

Restriction Sites: SgfI-MluI

Cloning Scheme:

Cloning sites used for ORF Shuttling:



* The last codon before the Stop codon of the ORF

ACCN: NC_003494

ORF Size: 924 bp

OTI Disclaimer: The molecular sequence of this clone can be viewed by clicking the "ORF Nucleotide Sequence" link above. This sequence represents the NCBI reference after codon optimization for human cell expression, and retaining the same decoded protein sequence. The stop codon in the native sequence was removed to create the in-frame c-terminal fusion with a Myc-DDK tag.

Components: The ORF clone is ion-exchange column purified and shipped in a 2D barcoded Matrix tube containing 10ug of transfection-ready, dried plasmid DNA (reconstitute with 100 ul of water).

- Reconstitution Method:**
1. Centrifuge at 5,000xg for 5min.
 2. Carefully open the tube and add 100ul of sterile water to dissolve the DNA.
 3. Close the tube and incubate for 10 minutes at room temperature.
 4. Briefly vortex the tube and then do a quick spin (less than 5000xg) to concentrate the liquid at the bottom.
 5. Store the suspended plasmid at -20°C. The DNA is stable for at least one year from date of shipping when stored at -20°C.

RefSeq: NC_003494.1, NP_612277
RefSeq ORF: 924 bp
Locus ID: 935383
MW: 34.1 kDa