

Product datasheet for **VC102331**

ORF041L (NC_003494) Virus Tagged ORF Clone

Product data:

Product Type:	Expression Plasmids
Product Name:	ORF041L (NC_003494) Virus Tagged ORF Clone
Tag:	Myc-DDK
Symbol:	ORF041L
Mammalian Cell Selection:	Neomycin
Vector:	pCMV6-Entry (PS100001)
E. coli Selection:	Kanamycin (25 ug/mL)



[View online »](#)

ORF Nucleotide Sequence:

>The Viral ORF clone VC102331 represents NCBI reference of NP_612263 with codon optimized for human cell expression
 Red=Cloning site Blue=ORF Green=Tags(s)

GACGTTGTATACGACTCCTATAGGGCGGCCGGAATTCGTCGACTGGATCCGGTACCGAGGAGATCTGCC
 GCC**CGGATCGCC**

ATGAAACATTTTGTGTCGTCGGAAGAAATAACCTGCCCGGGGGGCAAATGAAACAGAGAACCAGC
 CTAACAGATGCGTGACCGCCATCCGCCATGACACTGAAGTCCCGTCTATGATGAGACCGGGAGCTTT
 TGTGCCTGCTCCTGCTGTGACCGCCGAGTTCCACTGAGTGAACGGTATGCACTTCCATCTCCAGCTGAT
 ATTTCCCAGTCTTTAGTCACGGCTGGTCCCCTCCAATAGTATGCAGAGACACGTGCTGTGTGATCTGG
 AACGGATGGGGCAATCAATGGCAATGGCCGCTTCCGCGCCAGCCGACCGCCGCGCTCGCGCACATGT
 CATGCAGCAGTATGGTGCCTTGTGACACACACGGCCGAATACATGGACTCCGTCGAACGGGCTACCACT
 GTCGCCTCAATCAGCTCAAGACGCCATCAGAGATTATGATATGGTGGCAGAGCATAACCGGAACTGG
 CCGATCTGCTTAACCGCCTGCCAACCTGCTGAGACAGTACATAGAACAGCATGACTCACCACCGCACC
 ACTTCACAAGGTTTCGAGACGGTATCATGAGCAAGGCTGCACTGGCTTACGATCAGGTGCTGGCCACACAC
 AATAGTTTGGCACCAGCGCGGACATGCGGCTTAGAAACGCATCTAAGCTCTATAGCGAGAAGGATGCGT
 TTCTGCAATCGCCACTAAAACAGTGCCTAAATGGCTCCGCCAATGGGCAGACCAAAGGAGCGCCGTTCT
 CATTAACTTCGGACTATAGACAGCAACGTGGATAAGTACGTCCTGTCTGCTGCGCTGCGAAGGAAC
 GCCTCTCAGTATGCCACCTGGTACTCAGCAACAAATGGACGCTAAGCTCCTCACCTTTTCAGGCTGATG
 CGCCCGCAAACTATCGCAGGTCGAGGAGTCTGGTATAGTGCCCAAGACCTAATGCCGGAGTGATCGT
 TTATAATCTCGGGGATGACGATCGGACTGTGGAGCATGAGGTGGCAAACGTTGCGGTAGCTGCCTACACA
 GCCGGGGCAATGGTTATTACAGCTAGAGTGGCCTATAACAATAACACCCGAGGCTCCATATCCACAAGGT
 ACGATTCTGTAATGCTGCTGCTCTATATAGATGACACTGAGGTGCATAGGCAGACAAGGCCAGCGACCT
 TGGCAGACTGGACTATGTTTATGTACATGATGGCAGTGGCACCCCTGCACAGTGAAGCTGGCCATCAGC
 ACAATCGACATGCCACCCGACGCCACTGCTGTACACGTCAGCCTGGACCCCGGGTACCTATATGACCA
 TTGTCGTTGAG

ACGCGTACGCGGCCGCTCGAGCAGAAACTCATCTCAGAAGAGGATCTGGCAGCAAATGATATCCTGGATT
 ACAAGGATGACGACGATAAGGTTTAA

Protein Sequence:

>VC102331 representing NP_612263
 Red=Cloning sites Green=Tags

MKHFDVVGRRNLPARGGKMKQRTQPNRCVTAIRHDTEGPVYDETAGAFVPAPAVTAAVPLSERYALPSPAD
 ISPVFVSHGLVPSNSMQRHVLCDLERMGQSMAMAASAPADRAAAARAHVMQQYGALEHHTAEYMSVERATT
 VAFNQLQDAIRDYDMVAEHNRELADLLNRLPTLLROYIEQHDLTTAPLHKVRDGMASKAALAYDQVLATH
 NSLRTSADMRLRNASKLYSEKDAFLQIATKTVPKWLRQWADQRSVLIKLRRTIDSNVDKYVLSAALRRN
 ASQYATLVTTQQMDAKLLTFQADAPANTIAGRGVWYSAPRPNAGVIVYNLGGDDRTVEHEVANVAVAAAYT
 AGAMVITARVAYTITPAGSISTRYSVMLLLYIDDETEVHRQTRPSDLARLDYVYVHDGSGTPTVSLAIS
 TIDMPPDATAVHVSLDPRVYMTIVVQ

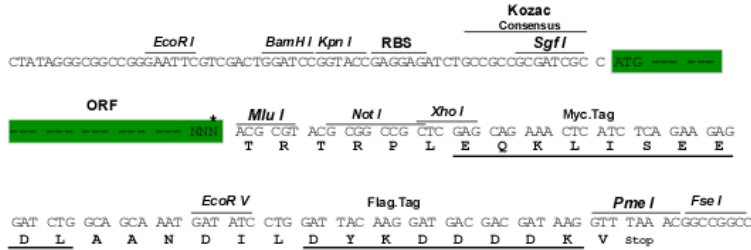
TRTRRLEQKLISEEDLAANDILDYKDDDDKV

Restriction Sites:

Sgfl-Mlul

Cloning Scheme:

Cloning sites used for ORF Shuttling:



* The last codon before the Stop codon of the ORF

ACCN: NC_003494

ORF Size: 1341 bp

OTI Disclaimer: The molecular sequence of this clone can be viewed by clicking the "ORF Nucleotide Sequence" link above. This sequence represents the NCBI reference after codon optimization for human cell expression, and retaining the same decoded protein sequence. The stop codon in the native sequence was removed to create the in-frame c-terminal fusion with a Myc-DDK tag.

Components: The ORF clone is ion-exchange column purified and shipped in a 2D barcoded Matrix tube containing 10ug of transfection-ready, dried plasmid DNA (reconstitute with 100 ul of water).

- Reconstitution Method:
1. Centrifuge at 5,000xg for 5min.
 2. Carefully open the tube and add 100ul of sterile water to dissolve the DNA.
 3. Close the tube and incubate for 10 minutes at room temperature.
 4. Briefly vortex the tube and then do a quick spin (less than 5000xg) to concentrate the liquid at the bottom.
 5. Store the suspended plasmid at -20°C. The DNA is stable for at least one year from date of shipping when stored at -20°C.

RefSeq: [NC_003494.1](#), [NP_612263](#)

RefSeq ORF: 1341 bp

Locus ID: 935374

MW: 49.3 kDa