

## Product datasheet for **VC102272**

### **G (NC\_001652) Virus Tagged ORF Clone**

#### **Product data:**

Product Type:	Expression Plasmids
Product Name:	G (NC_001652) Virus Tagged ORF Clone
Tag:	Myc-DDK
Symbol:	G Protein
Mammalian Cell Selection:	Neomycin
Vector:	pCMV6-Entry (PS100001)
E. coli Selection:	Kanamycin (25 ug/mL)



[View online »](#)

**ORF Nucleotide Sequence:**

>The Viral ORF clone VC102272 represents NCBI reference of NP\_042679 with codon optimized for human cell expression  
 Red=Cloning site Blue=ORF Green=Tags(s)

GACGTTGTATACGACTCCTATAGGGCGGCCGGAATTCGTCGACTGGATCCGGTACCGAGGAGATCTGCC  
 GCC**CGGATCGCC**

ATGGACACAATGATCACTACTCCTCTGATCTTGATCCTGATCACCTGTGGTGCTAACTCACAGACTGTGA  
 AGCCCCGATACCGCCTCAGAGTCCGATCAGCCCACGTGGAGCAACCCGTTGTTACAGTACCCTGAAGTTG  
 TACTCTCGACAACTGTCTAAGGTGAACGCAAGTCAGCTTCGCTGTCCCAGAATCTTTGATGACGAGAAC  
 CGCGGTCTGATTGCTTATCCAACGAGCATCCGCTCCTTGAGCGTGGGTAATGACTTGGGGGATATACATA  
 CCCAGGGGAATCACATACACAAAGTGCTGTACCGGACTATTTGCAGCACCGGGTTTTTCGGAGGACAGAC  
 GATCGAAAAGGCCCTCGTGAAGATGAAGCTGTCAACAAAGGAAGCTGGAGCGTACGACACGACCACCGCC  
 GCCGCCCTCTACTCCCCGCTCCTCGTGCCAGTGGTACACCGACAACGTCCAGAAGCAGTTGATCTTTT  
 ACTACACCACCCAAAAATCTGTGCTGCGGGATCCTTATACCAGGGACTTCTCGATTCTGACTTTATCGG  
 CGGAAAGTGACAAAATCCCCCTGCCAGACACATTGGTCTAATGTCGTGTGGATGGGAGATGCTGGGATC  
 CCTGCTTGCGATTTCATCACAGGAGATCAAAGCCCACCTTTTCGTGGACAAGATTTCTAACAGGGTTGTGA  
 AGGCCACCTTTACGGCCACCACCCGTGGGGACTGCACCAGGCATGTATGATAGAATTCTGCGGCCAGCA  
 ATGGATTCCGGACAGATCTGGGAGATTTGATATCCGTGGTGTATAATCCGGCAGCGAAATTTCTCTCATTC  
 CCTAAGTGTGAAGATAAGACCGTTGGGATGAGGGGCAACCTGGACGATTTTCGCTATCTTGATGATCTGG  
 TGAAGGCAAGTGAAGTGCAGAGAAGTGTCTGGAGGCCATGCCGAAATCATCTCCACGAATTCAGTGAC  
 TCCTTATCTGCTGTCAAAGTTCAGGTCTCCACATCCAGGAATCAACGATGTGTACGCAATGCACAAGGGT  
 AGTATCTATCACGGCATGTGCATGACCGTTGCAGTCGACGAAGTTCTAAAGACAGAACCACATACAGGG  
 CACATAGGGCCACCAGCTTTACCAAATGGGAACGACCTTTTCGGGGATGAATGGGAGGGGTTTCACGGCTT  
 GCACGGAAATAATACCACGATTATCCCGATCTGGAGAAATACGTCGCTCAGTACAAGATGTCCATGATG  
 GAGCCCATGAGTATCAAGTCTGTGCCACACCCCTCTATCCTGGCCCTGTATAATGAGACCGATGTCAGCG  
 GGATATCTATCCGGAAGCTGGACTCTTTTGATTGCGAGAGCTGCACTGGAGTTTTTGGCCACCATTTC  
 TGCACCTCGGTGGCATACTTTTGTGCTGTTGCTGTTGCTGTTGCCGCTGTTGCTGTTGGTCCGGTAGGCC  
 CCTACTCCTTCAGTCCCTCAGTCTATCCCTATGTACCATCTCGCAAACAGGAGT

**ACGCGT**ACGCGGCCGCTCGAGCAGAAACTCATCTCAGAAGAGGATCTGGCAGCAAATGATATCCTGGATT  
 ACAAGGATGACGACGATAAGGTTTAA

**Protein Sequence:**

>VC102272 representing NP\_042679  
 Red=Cloning sites Green=Tags

MDTMITPLILILITCGANSQTVKPDASESDQPTWSNPLFTYPEGCTLDKLSKVNASQLRCPRIFFDEN  
 RGLIAYPTSIRSLSVGNLDGIHTQGNHIIHKVLYRTICSTGFFGGQTIEKALVKMKLSTKEAGAYDTTAA  
 AALYFPAPRCQWYTDNVQNDLIFYTTQKSVLRDPYTRDFLDSDFIGGKCTKSPCQTHWSNVVWMDAGI  
 PACDSSQEIKAHLFVDKISNRVVKATSYGHPWGLHQACMIEFCGQQWIRTDLGDLSVYVNSGSEILSF  
 PKCEDKTVGMRGNLDDFAYLDDLKASESREECLEAHAEIISTNSVTPYLLSKFRSPHPGINDVYAMHKG  
 SIYHGMCMVAVDEVSKDRTTYRAHRATSFTKWERPFGDEWEGFHLHGNNTTIIPDLEKYVAQYKMSMM  
 EPMSIKSVPHPSILALYNETDVSGISIRKLDLDFDLQSLHWSFWPTISALGGIPFVLLLAACCCWSGRP  
 PTPSVPQSIIPMYHLANRS

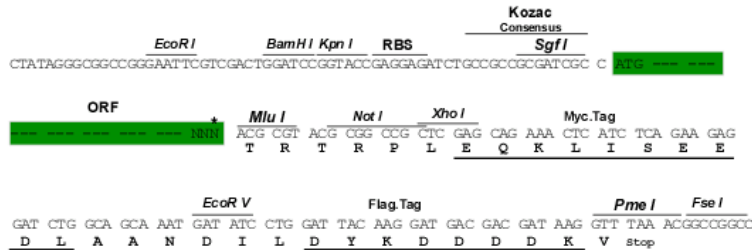
**TRTRRLEQKLI**SEEDLAANDILDYKDDDDKV

**Restriction Sites:**

Sgfl-Mlul

**Cloning Scheme:**

Cloning sites used for ORF Shuttling:



\* The last codon before the Stop codon of the ORF

**ACCN:** NC\_001652

**ORF Size:** 1524 bp

**OTI Disclaimer:** The molecular sequence of this clone can be viewed by clicking the "ORF Nucleotide Sequence" link above. This sequence represents the NCBI reference after codon optimization for human cell expression, and retaining the same decoded protein sequence. The stop codon in the native sequence was removed to create the in-frame c-terminal fusion with a Myc-DDK tag.

**Components:** The ORF clone is ion-exchange column purified and shipped in a 2D barcoded Matrix tube containing 10ug of transfection-ready, dried plasmid DNA (reconstitute with 100 ul of water).

**Reconstitution Method:**

1. Centrifuge at 5,000xg for 5min.
2. Carefully open the tube and add 100ul of sterile water to dissolve the DNA.
3. Close the tube and incubate for 10 minutes at room temperature.
4. Briefly vortex the tube and then do a quick spin (less than 5000xg) to concentrate the liquid at the bottom.
5. Store the suspended plasmid at -20°C. The DNA is stable for at least one year from date of shipping when stored at -20°C.

**RefSeq:** [NC\\_001652.1, NP\\_042679](#)
**RefSeq ORF:** 1524 bp

**Locus ID:** 1489848

**MW:** 56.8 kDa