

## Product datasheet for **VC102263**

### Coronavirus IBV nsp13 Gene Tagged ORF Clone

#### Product data:

Product Type:	Expression Plasmids
Product Name:	Coronavirus IBV nsp13 Gene Tagged ORF Clone
Tag:	Myc-DDK
Symbol:	coronavirus nsp13
Mammalian Cell Selection:	Neomycin
Vector:	pCMV6-Entry (PS100001)
E. coli Selection:	Kanamycin (25 ug/mL)
ORF Nucleotide Sequence:	>The Viral ORF clone VC102263 represents NCBI reference of NP_740633 with codon optimized for human cell expression Red=Cloning site Blue=ORF Green=Tags(s)

GACGTTGATACGACTCCTATAGGGCGGCCGGAATTCGTCGACTGGATCCGGTACCGAGGAGATCTGCC  
GCC**CGATCGCC**

ATGTCAGCATGGACTTGTGGCTACAATATGCCAGAGCTGTACAAGGTTTCAGAACTGCGTTATGGAACCCCT  
GCAATATCCCTAACTACGGCGTGGGAATCACCCTGCCAGCGGGATTCTGATGAACGTGGCCAAGTATAC  
TCAGCTGTGCCAATACTTGAGCAAGACTACCATATGCGTGCCACACAATATGAGGGTGATGCATTTCCGG  
GCTGGAAGCGATAAGGGAGTTGCTCCCGGATCAACCGTTCTCAAGCAGTGGCTGCCAGAGGGTACACTGC  
TCGTAGACAACGATATAGTCGATTATGTCAAGTATGCGCACGTTTCCGTAAGTGTCCGACTGCAATAAGTA  
CAACACCGAGCACAAATTCGATCTTGTGATCTCTGATATGTACACAGATAACGACTCAAAGAGAAAAGCAC  
GAAGGCGTGATTGCCAACACGGCAATGACGATGTGTTTATCTATCTCAGTTCATTTCTCAGGAACAACC  
TGGCTCTGGGGGCGAGTTTCGCCGTTAAAGTGACCGAAACCAGCTGGCACGAGGTGCTGTATGACATCGC  
CCAAGACTGTGCGTGGTGACAATGTTCTGCACTGCTGTTAACGCAAGTTCCTCAGAGGCTTTCTTGATC  
GGGGTTAATTATTTGGGCGCAAGTGAGAAAGTCAAGGTTAGTGGCAAACCCCTTCATGCAAATTACATCT  
TCTGGAGAACTGCAACTATCTGCAGACATCAGCCTATAGTATCTTCGACGTAGCTAAGTTCGATCTCCG  
GCTTAAGGCAACCCCTGTCGTCAATCTGAAGACTGAACAGAAGACGGACCTGGTTTTCAACCTGATCAAG  
TGCGGAAAACCTGCTCGTCAGAGACGTCGGCAACACCTCTTTCACAAGTGACTCATTGTGTGTACGATG

**ACGCGT**ACGCGGCCGCTCGAGCAGAAACTCATCTCAGAAGAGGATCTGGCAGCAAATGATATCCTGGATT  
ACAAGGATGACGACGATAAGGTTTAA



**Protein Sequence:** >VC102263 representing NP\_740633  
 Red=Cloning sites Green=Tags

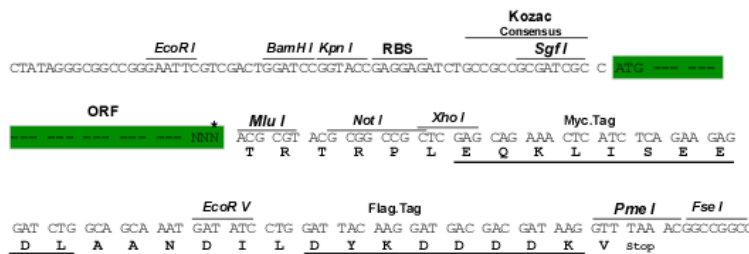
MSAWTCGYNMPELYKVVQNCVMEPCNIPNYGVGITLPSGILMNVAKYTQLCQYLSKTTICVPHNMRVMHFG  
 AGSDKGVAPGSTVLKQWLPEGTLLVDNDIVDYVSDAHVSVLSDCNKYNTEHKFDLVISDMYTDNDSKRKH  
 EGVIANNGNDVFIYLSFLRNALGGSFAVKVTETSWHEVL YDIAQDCAWTMTFC TAVNASSSEAF LI  
 GVN YLGASEKVKVSGKTLHANYIFWRNRCNYLQTSAYSIFDVAKFDLRLKATPVVNLKTEQKTDLVFNLIK  
 CGKLLVRDVGNTSFTSDSFVCTM

TRTRRLEQKLISEEDLAANDILDYKDDDDKV

**Restriction Sites:** SgfI-MluI

**Cloning Scheme:**

Cloning sites used for ORF Shuttling:



\* The last codon before the Stop codon of the ORF

**ACCN:** NC\_001451

**ORF Size:** 909 bp

**OTI Disclaimer:** Due to the inherent nature of this plasmid, standard methods to replicate additional amounts of DNA in E. coli are highly likely to result in mutations and/or rearrangements. Therefore, OriGene does not guarantee the capability to replicate this plasmid DNA. Additional amounts of DNA can be purchased from OriGene with batch-specific, full-sequence verification at a reduced cost. Please contact our customer care team at [custsupport@origene.com](mailto:custsupport@origene.com) or by calling 301.340.3188 option 3 for pricing and delivery.

The molecular sequence of this clone can be viewed by clicking the "ORF Nucleotide Sequence" link above. This sequence represents the NCBI reference after codon optimization for human cell expression, and retaining the same decoded protein sequence. The stop codon in the native sequence was removed to create the in-frame c-terminal fusion with a Myc-DDK tag.

**Components:** The ORF clone is ion-exchange column purified and shipped in a 2D barcoded Matrix tube containing 10ug of transfection-ready, dried plasmid DNA (reconstitute with 100 ul of water).

**Reconstitution Method:**

1. Centrifuge at 5,000xg for 5min.
2. Carefully open the tube and add 100ul of sterile water to dissolve the DNA.
3. Close the tube and incubate for 10 minutes at room temperature.
4. Briefly vortex the tube and then do a quick spin (less than 5000xg) to concentrate the liquid at the bottom.
5. Store the suspended plasmid at -20°C. The DNA is stable for at least one year from date of shipping when stored at -20°C.

**RefSeq:** [NC\\_001451.1](#), [NP\\_740633](#)

**RefSeq ORF:** 909 bp

**MW:** 33.8 kDa