

## Product datasheet for **VC102262**

### Coronavirus IBV nsp12 Gene Tagged ORF Clone

#### Product data:

Product Type:	Expression Plasmids
Product Name:	Coronavirus IBV nsp12 Gene Tagged ORF Clone
Tag:	Myc-DDK
Symbol:	coronavirus nsp12
Mammalian Cell Selection:	Neomycin
Vector:	pCMV6-Entry (PS100001)
E. coli Selection:	Kanamycin (25 ug/mL)
ORF Nucleotide Sequence:	>The Viral ORF clone VC102262 represents NCBI reference of NP_740632 with codon optimized for human cell expression <b>Red</b> =Cloning site <b>Blue</b> =ORF <b>Green</b> =Tags(s)

GACGTTGATACGACTCCTATAGGGCGGCCGGAATTCGTCGACTGGATCCGGTACCGAGGAGATCTGCC  
GCC**CGATCGCC**

ATGAGCATCGATAACATCGCATACAACATGTATAAGGGCGGCCATTATGACGCTATAGCCGGTGAAATGC  
CCACTGTGATTACAGGGGACAAGGTGTTTCGTGATCGATCAGGGAGTGAAAAAGCAGTCTTCGTGAATCA  
AACGACCCTGCCACAAGCGTTGCCTTCGAGTTGTATGCCAAGAGAAACATAAGGACCTTGCCCAATAAT  
CGCATCCTGAAAGGGCTGGGAGTCGACGTAACATAATGGGTTTGCATCTGGGACTACGAAATCAAACAC  
CACTGTATCGGAATACCGTCAAAGTATGCGCATACACTGACATCGAACCGAATGGACTCGTTGTGCTTTA  
CGATGATAGGTATGGCGACTATCAGTCTTTCCTGGCCGAGATAACGCCGTCCTGGTCTCTACTCAGTGC  
TACAAACGATACTCCTACGTCGAGATCCCCTCTAATCTTCTGTACAGAACGGAATGCCCTGAAAGATG  
GCGCGAATCTGTATGTTTACAAGCGGGTTAACGGGGCTTTCGTGACCCTGCCAAACACAATTAATACTCA  
AGGACGCTCATAACGAGACATTTGAACCTCGGTCCGACATCGAGCGGGACTTCTGGCCATGAGTGAAGAG  
TCCTTTGTGAAAGGTATGAAAGGACCTGGGGCTGCAGCATATCCTCTACGGGGAGGTGGATAAACCTC  
AACTGGGGGGCTGCATACAGTTATTGGGATGTACAGGCTGCTCCGAGCTAATAAACTGAATGCTAAGTC  
CGTTACTAATTCTGACTCCGACGTAATGCAAACTATTTTCGTGCTTAGCGACAACGGGAGCTATAAACAA  
GTCTGTACGGTGGTTGACCTGCTGCTGGACGACTTTTGGAACTGCTGCGGAACATCTTGAAGAGTACG  
GGACAAATAAGAGCAAGGTGGTCACCGTTAGTATTGACTACCACTCTATCAACTTCATGACCTGGTTCGA  
GGATGGTAGCATCAAACCTGCTACCCCAACTGCAG

**ACGCGT**ACGCGGCCGCTCGAGCAGAACTCATCTCAGAAGAGGATCTGGCAGCAAATGATATCCTGGATT  
ACAAGGATGACGACGATAAGGTTTAA



[View online »](#)

**Protein Sequence:** >VC102262 representing NP\_740632  
 Red=Cloning sites Green=Tags

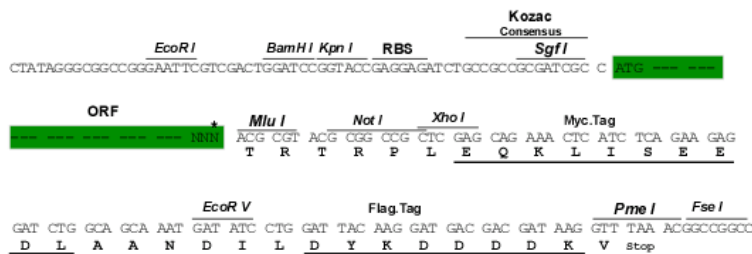
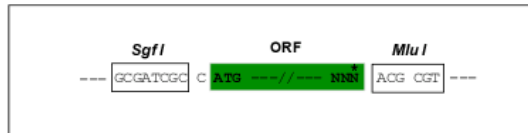
MSIDNIAYNMYKGGHYDAIAGEMPTVITGDKVFFVIDQGVKAVFVNQTTLPTSVAFELYAKRNIRTLPNN  
 RILKGLGVDVTNGFVIWDYANQTPLYRNTVKVCAYTDIEPNGLVVLYYDRYGDYQSFLAADNAVLVSTQC  
 YKRYSYVEIPSNLLVQNGMPLKDGANLYVYKRVNGAFVTLPTINTQGRSYETFEPRSDIERDFLAMSEE  
 SFVERYGKDLGLQHILYGEVDPQLGGLHTVIGMYRLLRANKLNAKSVTNSDSDVMQNYFVLSDNNGSYKQ  
 VCTVVDLLLDFFLELLRNILKEYGTNKSQVVTVSIDYHSINFMTWFEDGSIKTCYPQLQ

TRTRRLEQKLISEEDLAANDILDYKDDDDKV

**Restriction Sites:** SgfI-MluI

**Cloning Scheme:**

Cloning sites used for ORF Shuttling:



\* The last codon before the Stop codon of the ORF

**ACCN:** NC\_001451

**ORF Size:** 1017 bp

**OTI Disclaimer:** Due to the inherent nature of this plasmid, standard methods to replicate additional amounts of DNA in E. coli are highly likely to result in mutations and/or rearrangements. Therefore, OriGene does not guarantee the capability to replicate this plasmid DNA. Additional amounts of DNA can be purchased from OriGene with batch-specific, full-sequence verification at a reduced cost. Please contact our customer care team at [custsupport@origene.com](mailto:custsupport@origene.com) or by calling 301.340.3188 option 3 for pricing and delivery.

The molecular sequence of this clone can be viewed by clicking the "ORF Nucleotide Sequence" link above. This sequence represents the NCBI reference after codon optimization for human cell expression, and retaining the same decoded protein sequence. The stop codon in the native sequence was removed to create the in-frame c-terminal fusion with a Myc-DDK tag.

**Components:** The ORF clone is ion-exchange column purified and shipped in a 2D barcoded Matrix tube containing 10ug of transfection-ready, dried plasmid DNA (reconstitute with 100 ul of water).

**Reconstitution Method:**

1. Centrifuge at 5,000xg for 5min.
2. Carefully open the tube and add 100ul of sterile water to dissolve the DNA.
3. Close the tube and incubate for 10 minutes at room temperature.
4. Briefly vortex the tube and then do a quick spin (less than 5000xg) to concentrate the liquid at the bottom.
5. Store the suspended plasmid at -20°C. The DNA is stable for at least one year from date of shipping when stored at -20°C.

**RefSeq:** [NC\\_001451.1](#), [NP\\_740632](#)

**RefSeq ORF:** 1017 bp

**MW:** 38.4 kDa