

## Product datasheet for **VC102223**

### NS5A protein (NC\_004102) Virus Tagged ORF Clone

#### Product data:

Product Type:	Expression Plasmids
Product Name:	NS5A protein (NC_004102) Virus Tagged ORF Clone
Tag:	Myc-DDK
Symbol:	NS5A protein
Mammalian Cell Selection:	Neomycin
Vector:	pCMV6-Entry (PS100001)
E. coli Selection:	Kanamycin (25 ug/mL)



[View online »](#)

**ORF Nucleotide Sequence:**

>The Viral ORF clone VC102223 represents NCBI reference of NP\_751927 with codon optimized for human cell expression

Red=Cloning site Blue=ORF Green=Tags(s)

GACGTTGTATACGACTCCTATAGGGCGGCCGGAATTCGTCGACTGGATCCGGTACCGAGGAGATCTGCC  
GCC**CGGATCGCC**

ATGAGTGGCTCTTGGCTCAGGGACATCTGGGACTGGATCTGTGAAGTTTTGTCAGACTTTAAACATGGC  
TCAAAGCCAAACTGATGCCTCAACTGCCAGGGATTCCATTTGTAAGCTGCCAGCGGGTTATAGGGCGT  
ATGGCGGGGAGACGGAATCATGCACACCCGGTGTCACTGTGGAGCAGAAATTACGGGTATGTGAAAAAT  
GGCACAATGAGGATAGTTGGACCTCGCACTTGTAGAAATATGTGGTCAGGGACTTTCCCATTAATGCAT  
ACACTACCGGTCCATGCACACCGCTGCCAGCCCCAAATACAAGTTCGCGCTGTGGCGGTAAGCGCTGA  
AGAGTACGTGAAATTCGGCGGTTGGTACTTCCACTACGTGTCTGGCATGACAACCGACAACCTGAAG  
TGCCCTGTGAGATTCCATCTCCGAATCTTTCACAGAACTTATGGGGTCCGGTCCACAGATTCCGAC  
CTCCGTGCAAACCACTGTGAGAGAAGAAGTTTCTTTTGGGTTGGCCTTACAGATATCCCGTTGGGAG  
TCAGTTCCTGTGAACCGAACCTGACGTGGCGTGTGACAAGCATGTTACCGACCCCTCTCATATC  
ACCGCCGAAGCCGCTGGGCGGAGACTGGCACGAGGGAGTCCCCATCAATGGCTAGCAGTTCGCGCAGCC  
AACTGAGTGCCCATCACTTAAAGCAACCTGCACCGCAATCACGATTCTCCCGACCGGAGCTGATCGA  
GGCCAATCTGCTCTGGCGGACAGAAATGGGAGGCAACATCACTAGGGTGGAGTCTGAGAACAAGTCTGA  
ATTCTGGACTCATTTGACCCGCTGGTGTGAAGAAGACGAGAGAGAGGTCTCTGTGCCCGCTGAAATTC  
TCCGAAAGAGCCGGCGTTTCCAGAGCCCTCCCTGTTGGGCAAGACCTGATTATAATCCGCCATTGGT  
GGAGACTTGGAAAAGCCTGACTACGAGCCTCCGGTGTCCACGGTTCCTCTTCCACCACCCCGCTCA  
CCTCCAGTGCCACCTCCCGCAAAAAAAGAACCCTCGTGTCTCACTGAATCAACCTTTCTACTGCCCTTG  
CAGAGTTGGCGACTAAGTCTTCGGAAGTTCAAGCACTAGTGGCATCACCGGCGACAATACTACAACCTTC  
ATCCGAGCCAGCCCTTCAAGCTGCCACCCGACTCCGACGTGGAATCCTACAGTCCATGCCGCCCTG  
GAAGGGGAACCAGGAGATCTGATCTCTGATGGTCTCTGTTCCACTGTGTCTCAGGAGCCGATACCG  
AGGACGTGGTCTGTTGT

**ACGCGT**ACGCGGCCGCTCGAGCAGAAACTCATCTCAGAAGAGGATCTGGCAGCAAATGATATCTGGATT  
ACAAGGATGACGACGATAAGGTTTAA

**Protein Sequence:**

>VC102223 representing NP\_751927

Red=Cloning sites Green=Tags

MSGSWLRDIWDWICEVLSDFKTWLAKLMPQLPGIPFVSCQRYRGVWRGDGIMHTRCHCGAEITGHVKN  
GTMRIVGPRTCRNMWSGTFPINAYTTGPCTPLPAPNYKFALWRVSAEYVEIRRVGDFHYVSGMTDNLK  
CPCQIPSEFFTELDGVRLHRFAPPCKPLLREEVSFRVGLHEYPVGSQLPCEPEPDVAVLTSMLTDP  
SHITAEAAGRRLARGSPSSMASSASQLSAPSLKATCTANHDSPDAELIEANLLWRQEMGGNITRVESENKVV  
ILDSFDPLVAEEDEREVSVPAILRKSRRFARALPVWARPDYNPPLVETWKKPDYEPVVGHCPLPPRS  
PPVPPRKKRTVVLTSTLSTALAEATKSFSSSTSGITGDNTTSSEPAAPSGCPPDSDVESYSSMPPL  
EGEPGDPDLSGWSWTVSSGADTEDVCC

**TR**TRRLEQKLISEEDLAANDILDYKDDDDKV

**Chromatograms:**

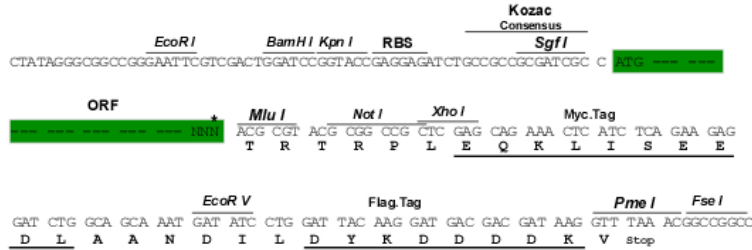
[https://cdn.origene.com/chromatograms/mk8100\\_c07.zip](https://cdn.origene.com/chromatograms/mk8100_c07.zip)

**Restriction Sites:**

Sgfl-Mlul

**Cloning Scheme:**

Cloning sites used for ORF Shuttling:



\* The last codon before the Stop codon of the ORF

**ACCN:** NC\_004102

**ORF Size:** 1347 bp

**OTI Disclaimer:** The molecular sequence of this clone can be viewed by clicking the "ORF Nucleotide Sequence" link above. This sequence represents the NCBI reference after codon optimization for human cell expression, and retaining the same decoded protein sequence. The stop codon in the native sequence was removed to create the in-frame c-terminal fusion with a Myc-DDK tag.

**Components:** The ORF clone is ion-exchange column purified and shipped in a 2D barcoded Matrix tube containing 10ug of transfection-ready, dried plasmid DNA (reconstitute with 100 ul of water).

**Reconstitution Method:**

1. Centrifuge at 5,000xg for 5min.
2. Carefully open the tube and add 100ul of sterile water to dissolve the DNA.
3. Close the tube and incubate for 10 minutes at room temperature.
4. Briefly vortex the tube and then do a quick spin (less than 5000xg) to concentrate the liquid at the bottom.
5. Store the suspended plasmid at -20°C. The DNA is stable for at least one year from date of shipping when stored at -20°C.

**RefSeq:** [NC\\_004102.1, NP\\_751927](#)
**RefSeq ORF:** 1347 bp

**MW:** 49.2 kDa