

Product datasheet for **VC102205**

NS3 (NC_009824) Virus Tagged ORF Clone

Product data:

Product Type:	Expression Plasmids
Product Name:	NS3 (NC_009824) Virus Tagged ORF Clone
Tag:	Myc-DDK
Symbol:	NS3
Mammalian Cell Selection:	Neomycin
Vector:	pCMV6-Entry (PS100001)
E. coli Selection:	Kanamycin (25 ug/mL)



[View online »](#)

ORF Nucleotide Sequence:

>The Viral ORF clone VC102205 represents NCBI reference of YP_001491553 with codon optimized for human cell expression

Red=Cloning site Blue=ORF Green=Tags(s)

GACGTTGTATACGACTCCTATAGGGCGGCCGGAATTCGTCGACTGGATCCGGTACCGAGGAGATCTGCC
GCC**CGGATCGCC**

ATGGGAAGAGAAGTCCTGCTTGGTCCAGCCGACGATTACAGGGAGATGGGGTGGCGCCTTCTGGCACCAA
TTACGGCTTATGCTCAGCAAACACGCGGTCTCCTCGGTACAATTGTGACCAGTCTTACTGGTAGGGATAA
GAATGTCGTAACAGGCGAGGTGCAGGTCTTGAGCACCGCCACCCAACTTCTGGGAACAACAGTGGGT
GGAGTCATTTGGACGGTGTACCACGGTGCAGGCTCAAGAACCCTTGCCGGCGCAAAACACCCGGCCCTTC
AGATGTACACAAACGTGGACCAGGACCTTGTAGGCTGGCCGGCCCCACCGGGCGCTAAGTCACTCGAACC
TTGCGCCTGTGGCTCATCTGATCTTACTTGGTGACCAGAGACGCCGACGTTATTCAGCAAGAAGGAGG
GGAGATCCACTGCATCCCTGCTGAGCCCCGCCATTGGCGTGCCTGAAAGTTCAGCGGGCGGACCTG
TTATGTGCCCTCCGGCCAGTCCGGGCATTTCCGAGCAGCCGTATGTACAAGAGGCGTGGCAAATC
CCTCCAATTTATCCTGTGGAGACGTTGTCTACACAGGCAAGGAGCCCTCCTTTAGCGACAACAGCAGC
CCTCCAGCCGTGCCTCAGTCTTATCAGGTTGGCTATCTCCACGCCCTACGGGGTCTGGCAAAAGTACGA
AGGTCCCAGCAGCATACGTGGCAGAGGCTACAACGTTCTGGTCTGAATCCTTCAGTCGCAGCTACCTT
TGGCTTTGGATCTTTCATGTCCAGGGCCTATGGCATCGATCCTAACATTCGGACAGGTAACAGAAGTGC
ACAACAGGAGCGAAGTTGACCTACTCTACCTACGGCAAGTTTCTGCCGATGGGGATGTAGTGGGGTG
CTTACGACGTATTATTTGTGATGAATGTCACGCTCAGGATGCAACCTCTATTCTCGAATCGGCACTGT
CCTGGACCAGGCAGAGACCGCTGGAGTGGCGTGACAGTGTGGCCACAGCCACCCCTCCAGGTAGTATC
ACAGTCCCACATTCCAACATTGAAGAGTTGCGTGGCTCTGAGGGCGAGATAACATTTATGAAAGG
CCATCCCAATAGCTCTCCTGAAAGGAGGTCGGCACCTTATTTCTGCCACTCCAAAAAGAAATGCGATGA
GATCGCAAGTAAGCTGCGGGGAATGGGACTCAACGCCGTCGCATACTACCGGGCCTGGACGTGAGTGTA
ATCCCCACCAGTGGAGATGTGGTGGTATGCGCCACTGATGCCCTCATGACTGGCTTACCGGCGACTTCG
ATTCAGTGATCGATTGCAACGTAGCCGTCGAGCAGTACGTCGACTTCTCTCTGGATCCAACCTTCTCTAT
CGAAACACGGACAGCCCCACAAGATGCCGTCTCCCGATCTCAAAGACGCGCGGACAGGGAGAGGCCGA
CTCGGCACATACAGATATGTGGCCAGCGGAGAGCGACCCAGCGCATGTTTCGATTAGTTGTGCTGTGCG
AGTGTATGACCGCGGATGTTCTTGGTATGATCTGCAGCCGGCTGAAACTACTGTTAGACTCCGGGCTTA
TCTGTCCACCCAGGGTTGCCCTTTGTCAGGACCACCTCGATTCTGGGAGTCTGTATTACCGGCCTG
ACTCACATCGACGCTCACTTCTGTCCAAACGAAGCAACAGGGTTTGAACCTCAGTTATCTGACTGCAT
ACCAGGCTACAGTTTGTGCTCGGGCACAGGCGCCCCACCTTCTTGGGATGAAATGTGGAAGTGCCTTGT
ACGGCTTAAACCCACTCTCCATGGCCCCACCCCTTGTGTATCGCTTGGGTCCAGTTTCCAGAACGAACT
TGCTGACTCATCCCATACCAAGTATCTTATGGCCTGCATGAGCGCCGATCTGGAGGTCCTACT

ACGCGTACGCGGGCCGCTCGAGCAGAACTCATCTCAGAAGAGGATCTGGCAGCAATGATATCCTGGATT
ACAAGGATGACGACGATAAGGTTTAA

Protein Sequence: >VC102205 representing YP_001491553
 Red=Cloning sites Green=Tags

MGREVLLGPADDYREMGWRLAPITAYAQQTRGLLGTIVTSLTGRDKNVVTGEVQVLSTATQTFLGTTVG
 GVIWTVYHGAGSRTLAKAKHPALQMYTNVDQDLVGWPAPPGAKSLEPCACGSSDLYLVTADADVIPARRR
 GDSTASLLSPRPLACLKSSGGPVMCPSGHVAGIFRAAVCTRGVAKSLQFIPVETLSTQARSPFSNDNST
 PPAVPQSYQVGYLHAPTGSQKSTKVPAAYYVAQGYNVLLVNPSSVAATLGFSGFMSRAYGIDPNIRTNRTV
 TTGAKLTYSTYQKFLADGGCSGGAYDVIICDECHAQDATSILGIGTVLDQAETAGVRLTVLATATPPGSI
 TVPHSNIEEVALGSEGEIPFYGKAIPILLKGGRHLIFCHSKKCCDEIASKLRGMGLNAVAYYRGLDVSV
 IPTTGDVVVCAATDALMTGFTGDFDSVIDCNVAEQYVDFSLDPTFSIETRTAPQDAVSRQRRTGRGR
 LGTYRYVASGERPSGMFDSVLLCECYDAGCSWYDLQPAETTVRLRAYLSTPGLPVCQDHLDFWESVFTGL
 THIDAFLSQTKQQGLNFSYLTA YQATVCARAQAPPPSWDEMWKCLVRLKPTLHGPTPLL YRLGPVQNET
 CLTHPITKYLMACMSADLEVT

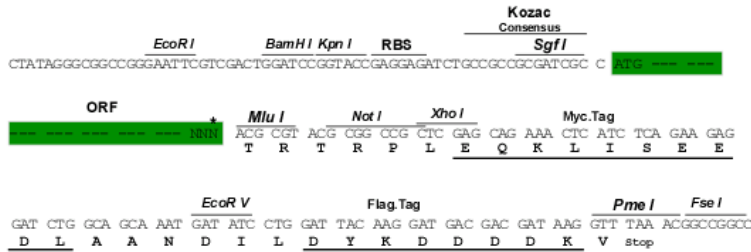
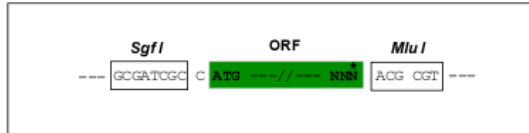
TRTRRLEQKLI SEEDLAANDILDYKDDDDKV

Chromatograms: https://cdn.origene.com/chromatograms/ja3273_h01.zip

Restriction Sites: Sgfl-MluI

Cloning Scheme:

Cloning sites used for ORF Shuttling:



* The last codon before the Stop codon of the ORF

ACCN: NC_009824

ORF Size: 1956 bp

OTI Disclaimer: Due to the inherent nature of this plasmid, standard methods to replicate additional amounts of DNA in E. coli are highly likely to result in mutations and/or rearrangements. Therefore, OriGene does not guarantee the capability to replicate this plasmid DNA. Additional amounts of DNA can be purchased from OriGene with batch-specific, full-sequence verification at a reduced cost. Please contact our customer care team at custsupport@origene.com or by calling 301.340.3188 option 3 for pricing and delivery.

The molecular sequence of this clone can be viewed by clicking the "ORF Nucleotide Sequence" link above. This sequence represents the NCBI reference after codon optimization for human cell expression, and retaining the same decoded protein sequence. The stop codon in the native sequence was removed to create the in-frame c-terminal fusion with a Myc-DDK tag.

Components: The ORF clone is ion-exchange column purified and shipped in a 2D barcoded Matrix tube containing 10ug of transfection-ready, dried plasmid DNA (reconstitute with 100 ul of water).

Reconstitution Method:

1. Centrifuge at 5,000xg for 5min.
2. Carefully open the tube and add 100ul of sterile water to dissolve the DNA.
3. Close the tube and incubate for 10 minutes at room temperature.
4. Briefly vortex the tube and then do a quick spin (less than 5000xg) to concentrate the liquid at the bottom.
5. Store the suspended plasmid at -20°C. The DNA is stable for at least one year from date of shipping when stored at -20°C.

RefSeq: [NC_009824.1](#), [YP_001491553](#)

RefSeq ORF: 1956 bp

MW: 69.5 kDa