

## Product datasheet for **VC102196**

### large S protein (NC\_003977) Virus Tagged ORF Clone

#### Product data:

Product Type:	Expression Plasmids
Product Name:	large S protein (NC_003977) Virus Tagged ORF Clone
Tag:	Myc-DDK
Symbol:	large S protein
Mammalian Cell Selection:	Neomycin
Vector:	pCMV6-Entry (PS100001)
E. coli Selection:	Kanamycin (25 ug/mL)
ORF Nucleotide Sequence:	>The Viral ORF clone VC102196 represents NCBI reference of YP_355333 with codon optimized for human cell expression Red=Cloning site Blue=ORF Green=Tags(s)

GACGTTGTATACGACTCCTATAGGGCGGCCGGAATTCGTCGACTGGATCCGGTACCGAGGAGATCTGCC  
GCC**CGATCGCC**

ATGGGCGGCTGGAGCTCTAAACCCAGACAGGGCATGGAACTAACCTGAGCGTGCCAAATCCAATTGGGT  
TCTTTCCCGACCACCAGCTGGACCCAGCTTTGGCGCCAATAGCAACAACCCGGATTGGGACTTCAACCC  
AAACAAAGACCATTGGCCTGAAGCGAATCAGGTGGGAGCTGGAGCCTTCGGTCCAGGCTTACACCCCA  
CATGGCGGCTGCTGGGTTGGAGCCCTCAAGCGCAAGGCATCTTGACCACACTTCCCTGCAGCTCCTCCC  
CCGCGTCCACTAATCGCCAGAGTGGCAGACAGCCAACACCAATATCACCGCCTTTAGAGACTCTACCC  
TCAGGCCATGCAGTGGAACAGCACCCTTTCCACCAGGCACTTCTGGACCCAGGTCAGAGGGTGTAT  
TTCCCTGCCGGAGGCAGTTCCTCTGGCACTGTCAACCCGGTCCGACCACGGCTTCTCTATCTCTCAA  
TTTTCTCAAGAACCGGCGACCCCGCACCAACATGGAATCCACTACAAGCGGCTTCTTGCCCTTCT  
GGTGTGCAGGCTGGTTTTTCTCTGACGCGCATACTTACCATACCTCAGTCACTGGATTCTTGGTGG  
ACATCTCTGAATTTCTGGTGGGGCTCCACATGTCCCGCCAGAATAGCCAGTCTCCACTTCCAACC  
ATTCCTACCAGCTGCCCCCACATGTCCAGGTTACCGGTGGATGTGCTGAGGAGATTTATTATATT  
CCTCTTTATCCTCTGCTTTCCTGATTTCTCTTGGTTCTCCTTGATTATCAGGGGATGCTGCCGCTC  
TGTCTCTGCTTCTGGCACATCAACCCTCAACCGGCCATGCCGACAGTGTACCATACCCGCACAGG  
GGACATCTATGTTCCCTAGCTGCTGTTGCACTAAACCCAGCGACGGAACTGTACGTGCATTCCCATCCC  
CTCCTCATGGGCTTCGCCAGATTTCTGTGGGAGTGGGCCAGCGTAAGATTCTCTTGGTTGTCCCTCCTG  
GTCCCGTTCGTCCAGTGGTTCGTGGGCTGAGCCCCACGGTGTGGTTGTCTGCGATCTGGATGATGGT  
ATTGGGGCTTCCCTGTACAACATTCTGTCTCCCTTCTCCCTCTGCTCCCTATATTCTTGTCTCTG  
GGTGATATC

**ACGCGT**ACGCGGCCGCTCGAGCAGAACTCATCTCAGAAGAGGATCTGGCAGCAAATGATATCTGGATT  
ACAAGGATGACGACGATAAGGTTTAA



Protein Sequence: >VC102196 representing YP\_355333  
 Red=Cloning sites Green=Tags

MGGWSSKPRQGMGTNLSVPNPLGFFPDHQLDPAFGANSNPDWDFNPNKDHWPEANQVAGAGFGPGFTFP  
 HGLLGWSPQAQGILTTLPAAPPASTNRQSGRQPTPI SPPLRDSHPQAMQWNSTTFHQALLDPRVRGLY  
 FPAGSSSGTVNVPVPTTASPISSIFSRGTDPAPNMESTTSGFLGPLLVLQAGFLLTRILTIPQSLDSWW  
 TSLNFLGGAPTCPGQNSQSPTSNNHSPTS CPPTCPGYRWMCLRRFIFLFI LLLCLIFLLVLLDYQGMLPV  
 CPLLPGTSTTSTGPCRTCTIPAQGTSMFPSCCCTKPSDGNCTCIPIPSSWAFARFLWEWASVRFWSLL  
 VPFVQWFVGLSPTVWLSAIWMMWYWGPSLYNILSPFLPLLPIFFCLWVYI

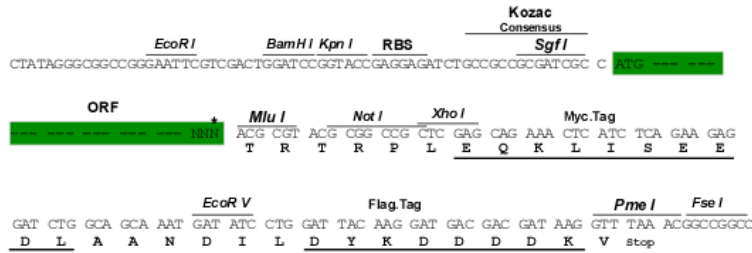
TRTRRLEQKLISEEDLAANDILDYKDDDDKV

Chromatograms: [https://cdn.origene.com/chromatograms/ja2217\\_h10.zip](https://cdn.origene.com/chromatograms/ja2217_h10.zip)

Restriction Sites: SgfI-MluI

Cloning Scheme:

Cloning sites used for ORF Shuttling:



\* The last codon before the Stop codon of the ORF

ACCN: NC\_003977

ORF Size: 1200 bp

OTI Disclaimer: Due to the inherent nature of this plasmid, standard methods to replicate additional amounts of DNA in E. coli are highly likely to result in mutations and/or rearrangements. Therefore, OriGene does not guarantee the capability to replicate this plasmid DNA. Additional amounts of DNA can be purchased from OriGene with batch-specific, full-sequence verification at a reduced cost. Please contact our customer care team at [custsupport@origene.com](mailto:custsupport@origene.com) or by calling 301.340.3188 option 3 for pricing and delivery.

The molecular sequence of this clone can be viewed by clicking the "ORF Nucleotide Sequence" link above. This sequence represents the NCBI reference after codon optimization for human cell expression, and retaining the same decoded protein sequence. The stop codon in the native sequence was removed to create the in-frame c-terminal fusion with a Myc-DDK tag.

<b>Components:</b>	The ORF clone is ion-exchange column purified and shipped in a 2D barcoded Matrix tube containing 10ug of transfection-ready, dried plasmid DNA (reconstitute with 100 ul of water).
<b>Reconstitution Method:</b>	<ol style="list-style-type: none"><li>1. Centrifuge at 5,000xg for 5min.</li><li>2. Carefully open the tube and add 100ul of sterile water to dissolve the DNA.</li><li>3. Close the tube and incubate for 10 minutes at room temperature.</li><li>4. Briefly vortex the tube and then do a quick spin (less than 5000xg) to concentrate the liquid at the bottom.</li><li>5. Store the suspended plasmid at -20°C. The DNA is stable for at least one year from date of shipping when stored at -20°C.</li></ol>
<b>RefSeq:</b>	<u><a href="#">NC_003977.1</a></u> , <u><a href="#">YP_355333</a></u>
<b>RefSeq ORF:</b>	1200 bp
<b>Locus ID:</b>	944569
<b>MW:</b>	43.7 kDa