

Product datasheet for **VC102173**

protein 2C (NC_010810) Virus Tagged ORF Clone

Product data:

Product Type:	Expression Plasmids
Product Name:	protein 2C (NC_010810) Virus Tagged ORF Clone
Tag:	Myc-DDK
Symbol:	protein 2C
Mammalian Cell Selection:	Neomycin
Vector:	pCMV6-Entry (PS100001)
E. coli Selection:	Kanamycin (25 ug/mL)
ORF Nucleotide Sequence:	>The Viral ORF clone VC102173 represents NCBI reference of YP_001950228 with codon optimized for human cell expression Red=Cloning site Blue=ORF Green=Tags(s)

GACGTTGTATACGACTCCTATAGGGCGGCCGGGAATTCGTCGACTGGATCCGGTACCGAGGAGATCTGCC
GCC**CGATCGCC**

ATGTCTCCCGTGAGGGAAGCCAACGATAATTTTAACTCGCCAAAAACATCGAGTGGGCTATTAAGACAA
TCAAGCGGATTGTTGAATGGATCAGTCATGGTTCAAACAGGAAGAGACCTCTCCCAAGCTAAGCTGGA
TAAGATGCTGGCCGACTTCCCGAGCATTGTTCCCTCCATCCTCGCAATGAGAAACGGACGCAAAGCATAT
ACCGATTGTGCCGGCGCTTTCAAATATTTGAACAACGTACAACCTGGCGGTGCAGTGTAAACGGATT
CACTCGCCACCTTGTGTGAGAAATCAAGAATAAACACGATCATGCAGTTGCCAGGCTGAACCAAGTGGT
CGTTGTTCTTAGGGAAACGCGGGCAGGGCAAGAGCGTAACTCTCAGATCATTGCCAGGCGGTGTC
AACTGCTCTTCGGAAGACAGTCCGTGACTCTTTGCCCCCGACAGTATTATCTGGATGGTTACGAGA
ACCAGTACTCTGTGATAATGGATGATCTGGGACAGAACCCCGACGGGAAGACTTCAAGTCTTCTGCCA
AATGGTCTCTTACTAACTTTTGCCAAACATGGCCACTTGGAAAAAAGGGAACCTCCATTTACCAGC
AACTTTATCATTGCCACCACAAATTTGCCAAATTCGCCCGGTGACTGTGGCTCACTACCTGCCGTGG
ATAGGCGCATCACATTTGATCTTACTGTGAGGCGGAGACGAGTGCATAACCCATAACGGAATGCTTGA
CGTCGAGAAAGCTTTGAGGAAACCCAGGAAACCCCAACTGGACTGTTTTAACACAGATTGCAGGCTC
CTTCATAAGCGGGCGTCCGATTCATCTGCAACAGGACTAAGAACATCTATAACCTGCAGCAGGTGCTCA
AGATGGTCAAAAACACTATTGACAATAAAGTGGAAAACCTGAAGAAGATGAACACACTGGTGCCCGAG

ACGCGTACGCGGGCGCTCGAGCAGAACTCATCTCAGAAGAGGATCTGGCAGCAAATGATATCCTGGATT
ACAAGGATGACGACGATAAGGTTTAA



[View online »](#)

Protein Sequence: >VC102173 representing YP_001950228
 Red=Cloning sites Green=Tags

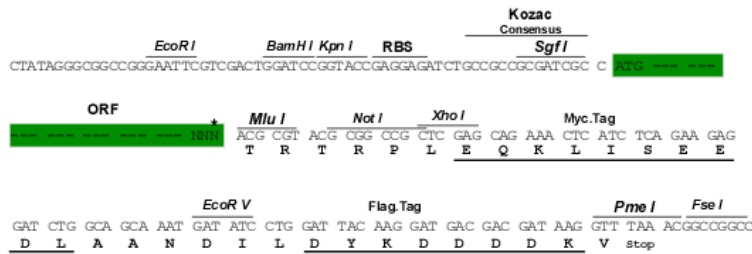
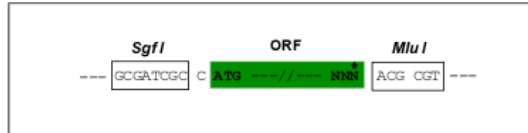
MSPVREANDNFNLAKNIEWAIKTIKRIVEWITSWFKQEETSPQAKLDKMLADFPHEHCSSILAMRNGRKAY
 TDCAGAFKYFEQLYNLAVQCKRIPLATLCEKFKNKHDHAVARPEPVVVVLRGNAGQGKSVTSQIIAQAVS
 KLLFGRQSVYSLPPDSYLDGYENQYSVIMDDLQONPDGEDFKVFCQMVSTNFLPNMAHLEKKGTPFTS
 NFIIATTNLPKFRPVTVAHYPAVDRRITFDLTVEAGDECITHNGMLDVEKAFAEETPGKPQLDCFNTDCRL
 LHKRGVRFICNRTKNIYNLQVVKMVKNTIDNKVENLKKMNTLVAQ

TRTRRLEQKLISEEDLAANDILDYKDDDDKV

Restriction Sites: SgfI-MluI

Cloning Scheme:

Cloning sites used for ORF Shuttling:



* The last codon before the Stop codon of the ORF

ACCN: NC_010810

ORF Size: 978 bp

OTI Disclaimer: The molecular sequence of this clone can be viewed by clicking the "ORF Nucleotide Sequence" link above. This sequence represents the NCBI reference after codon optimization for human cell expression, and retaining the same decoded protein sequence. The stop codon in the native sequence was removed to create the in-frame c-terminal fusion with a Myc-DDK tag.

Components: The ORF clone is ion-exchange column purified and shipped in a 2D barcoded Matrix tube containing 10ug of transfection-ready, dried plasmid DNA (reconstitute with 100 ul of water).

- Reconstitution Method:**
1. Centrifuge at 5,000xg for 5min.
 2. Carefully open the tube and add 100ul of sterile water to dissolve the DNA.
 3. Close the tube and incubate for 10 minutes at room temperature.
 4. Briefly vortex the tube and then do a quick spin (less than 5000xg) to concentrate the liquid at the bottom.
 5. Store the suspended plasmid at -20°C. The DNA is stable for at least one year from date of shipping when stored at -20°C.

RefSeq: [NC_010810.1, YP_001950228](#)
RefSeq ORF: 978 bp
MW: 37.0 kDa