

Product datasheet for **VC102145**

tax (NC_001436) Virus Tagged ORF Clone

Product data:

Product Type:	Expression Plasmids
Product Name:	tax (NC_001436) Virus Tagged ORF Clone
Tag:	Myc-DDK
Symbol:	tax
Mammalian Cell Selection:	Neomycin
Vector:	pCMV6-Entry (PS100001)
E. coli Selection:	Kanamycin (25 ug/mL)
ORF Nucleotide Sequence:	>The Viral ORF clone VC102145 represents NCBI reference of NP_057864 with codon optimized for human cell expression Red=Cloning site Blue=ORF Green=Tags(s)

GACGTTGTATACGACTCCTATAGGGCGGCCGGAATTCGTCGACTGGATCCGGTACCGAGGAGATCTGCC
GCC**CGATCGCC**

ATGGCACACTTTCCTGGGTTTGGGCAGTCACTGCTCTTTGGGTACCCCGTTTATGTATTCGGCGACTGTG
TTCAAGGAGACTGGTGTCTATCTCAGGCGGTCTCTGTTCGCTCGACTCCACCGCATGCACCTCCTCGC
GACATGTCCCAGCATCAGATAACCTGGGATCCAATCGACGGAAGGGTGATAGGCTCTGCCCTGCAGTTT
CTCATCCCTCGCCTGCCAGCTTCCCACCCAGCGAACCTCCAAAACCTTGAAGGTCTTGACCCCTCCAA
TCACACATACTACCCCTAACATCCCGCCTTCTTCTGCAAGCCATGCGAAAATACAGCCCTTCAGAAA
CGGTTACATGGAACCTACTTTGGGTGAGCACCTGCCTACATTGTCTTTCCGGACCCCGCCTGCGACCG
CAGAACCTGTATACACTGTGGGGCGGCTGTGCTGTGTATGTACCTCTACCAGCTGTACCGCCCATCA
CGTGGCCCTGTTGCCCATGTAATATTTGCCACCCAGGACAGCTCGGCGCCTTCTGACAAAACGTCCC
TTATAAACGAATCGAAAACTCCTGTATAAAATTTCACTGACCACCGGAGCCCTGATAATACTGCCTGAA
GACTGCCTGCCAACCCTCTGTTTCAACCCGCTAGGGCTCCCGTCAACCCTCACTGCTTGGCAGAACGGAC
TCCTGCCCTTCCATTCCACCCTCACAATCCAGGGTTGATTTGGACATTTACCGATGGAACCTCTATGAT
TTCCGGACCTTGCCCAAGGACGGACAGCCATCCTTGGTGTCCAATCCTCCTCTTTATTTCCACAAG
TTTCAAACGAAGGCATACCATCCTAGCTTCTGCTGAGCCATGGACTGATACAGTACTCTCTTTTCATA
ATCTGCACCTGTTGTTTGGAGGATATACTAATATCCCAATCAGCCTCCTTTAATGAAAAAGAGCGGA
CGACAATGATCATGAGCCGAGATCTCACCTGGCGGGCTGGAGCCCTTAGCGAAAAGCATTTTCGCGAA
ACAGAGGTC

ACGCGTACGCGGCCGCTCGAGCAGAAACTCATCTCAGAAGAGGATCTGGCAGCAAATGATATCCTGGATT
ACAAGGATGACGACGATAAGGTTTAA



[View online »](#)

Protein Sequence: >VC102145 representing NP_057864
 Red=Cloning sites Green=Tags

MAHFPGFGQSLLFGYPVYVFGDCVQGDWCPISSGLCSARLHRHALLATCPEHQITWDPIDGRVIGSALQF
 LIPRLPSFPTQRTSKTLKVLTPPIHTTPNIPPSFLQAMRKYSPPFRNGYMEPTLGQHLPTLSFPDPLRP
 QNLYTLWGGSVVCMYLQLSPPITWPLLPHVIFCHPGQLGAFLTNPYKRIEKLLYKISLTTGALIILPE
 DCLPTTLFQPARAPVTLTAWQNGLLPFHSTLTPGLIWTFTDGTMPISGPCPKDQGPSVLVQSSSFIHFK
 FQTKAYHPSFLLSHGLIQYSSFHNLHLLFEEYTNIPISLLFNEKEADDNDHEPQISPGGLEPLSEKHFRE
 TEV

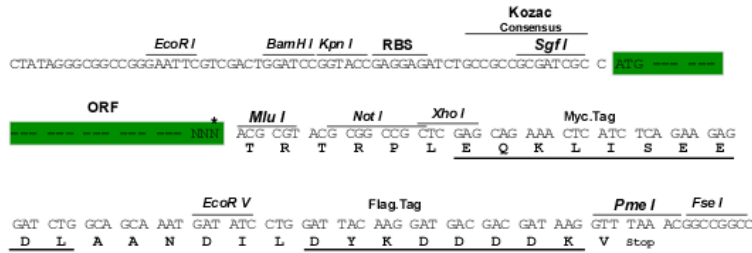
TRTRRLEQKLISEEDLAANDILDYKDDDDKV

Chromatograms: https://cdn.origene.com/chromatograms/ja1881_a09.zip

Restriction Sites: SgfI-MluI

Cloning Scheme:

Cloning sites used for ORF Shuttling:



* The last codon before the Stop codon of the ORF

ACCN: NC_001436

ORF Size: 1059 bp

OTI Disclaimer: Due to the inherent nature of this plasmid, standard methods to replicate additional amounts of DNA in E. coli are highly likely to result in mutations and/or rearrangements. Therefore, OriGene does not guarantee the capability to replicate this plasmid DNA. Additional amounts of DNA can be purchased from OriGene with batch-specific, full-sequence verification at a reduced cost. Please contact our customer care team at custsupport@origene.com or by calling 301.340.3188 option 3 for pricing and delivery.

The molecular sequence of this clone can be viewed by clicking the "ORF Nucleotide Sequence" link above. This sequence represents the NCBI reference after codon optimization for human cell expression, and retaining the same decoded protein sequence. The stop codon in the native sequence was removed to create the in-frame c-terminal fusion with a Myc-DDK tag.

Components:	The ORF clone is ion-exchange column purified and shipped in a 2D barcoded Matrix tube containing 10ug of transfection-ready, dried plasmid DNA (reconstitute with 100 ul of water).
Reconstitution Method:	<ol style="list-style-type: none">1. Centrifuge at 5,000xg for 5min.2. Carefully open the tube and add 100ul of sterile water to dissolve the DNA.3. Close the tube and incubate for 10 minutes at room temperature.4. Briefly vortex the tube and then do a quick spin (less than 5000xg) to concentrate the liquid at the bottom.5. Store the suspended plasmid at -20°C. The DNA is stable for at least one year from date of shipping when stored at -20°C.
RefSeq:	<u>NC_001436.1, NP_057864</u>
RefSeq ORF:	1059 bp
Locus ID:	1491938
MW:	39.5 kDa