

Product datasheet for **VC102134**

2A (NC_009996) Virus Tagged ORF Clone

Product data:

Product Type: Expression Plasmids
Product Name: 2A (NC_009996) Virus Tagged ORF Clone
Tag: Myc-DDK
Symbol: 2A
Mammalian Cell Selection: Neomycin
Vector: pCMV6-Entry (PS100001)
E. coli Selection: Kanamycin (25 ug/mL)
ORF Nucleotide Sequence: >The Viral ORF clone VC102134 represents NCBI reference of YP_001552436 with codon optimized for human cell expression
Red=Cloning site **Blue**=ORF **Green**=Tags(s)

GACGTTGTATACGACTCCTATAGGGCGGCCGGGAATTCGTCGACTGGATCCGGTACCGAGGAGATCTGCC
 GCC**CGATCGCC**

ATGGGACCAAGCGACCTGTTGTTCACTGCCACCATGATCTACCGAACGCCACCTGACAAGTCTGA
 ATGATAAACTGTGCTGCTCGCTCTGAGCGTGACCTCCAAGTTGACGCAGCTGATCAGCCCGGCCCTGA
 CACTATCCCGCAGTGTGACTGTTGGAGGGATGCTATTATTCAAAGTCTTTGACAGATACATCCCTGTG
 AAGCTGGAGGCCACGATTGGTACCAGATAGAGGAGACTTGCTACTATCCCAGCATATTCATATAATA
 TAATGATTGGGGAAGGCCACTGTCAACCTGGAGATTGTGGCGGAAAAGTCTGCACTCATGGGGTCAT
 TGGAAATTATTACCGCTGGCGGAGATAATCACGTGCGGTTACCGACTGCGCCCTATAGCTGCCTCGAC
 ACACATCAG

ACGCGTACGCGGCCGCTCGAGCAGAACTCATCTCAGAAGAGGATCTGGCAGCAAATGATATCCTGGATT
 ACAAGGATGACGACGATAAGGTTTAA

Protein Sequence: >VC102134 representing YP_001552436
Red=Cloning sites **Green**=Tags

MGPSDLFVHTATMIYRNAHLTSLNDKTVLLALSADLQVDAADQPGPDTIPQCDCLEGCYYSKSLDRYIPV
 KLEAHDWYQIEETCYYPQHIQYNIMIGEGHCQPGDCGGKLLCTHGVIGIITAGGDNHVAFTDLRPYSCLD
 THQ

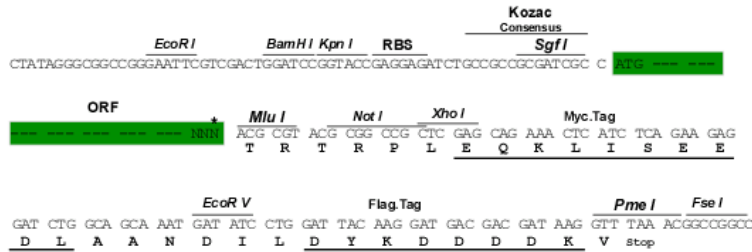
TRTRRLEQKLISEEDLAANDILDYKDDDDKV

Restriction Sites: SgfI-MluI



Cloning Scheme:

Cloning sites used for ORF Shutting:



* The last codon before the Stop codon of the ORF

ACCN: NC_009996

ORF Size: 429 bp

OTI Disclaimer: The molecular sequence of this clone can be viewed by clicking the "ORF Nucleotide Sequence" link above. This sequence represents the NCBI reference after codon optimization for human cell expression, and retaining the same decoded protein sequence. The stop codon in the native sequence was removed to create the in-frame c-terminal fusion with a Myc-DDK tag.

Components: The ORF clone is ion-exchange column purified and shipped in a 2D barcoded Matrix tube containing 10ug of transfection-ready, dried plasmid DNA (reconstitute with 100 ul of water).

Reconstitution Method:

1. Centrifuge at 5,000xg for 5min.
2. Carefully open the tube and add 100ul of sterile water to dissolve the DNA.
3. Close the tube and incubate for 10 minutes at room temperature.
4. Briefly vortex the tube and then do a quick spin (less than 5000xg) to concentrate the liquid at the bottom.
5. Store the suspended plasmid at -20°C. The DNA is stable for at least one year from date of shipping when stored at -20°C.

RefSeq: [NC_009996.1](#), [YP_001552436](#)
RefSeq ORF: 429 bp

MW: 15.8 kDa