

Product datasheet for VC102124

P2-C polypeptide (NC_001617) Virus Tagged ORF Clone

Product data:

Product Type:	Expression Plasmids
Product Name:	P2-C polypeptide (NC_001617) Virus Tagged ORF Clone
Tag:	Myc-DDK
Symbol:	P2-C polypeptide
Mammalian Cell Selection:	Neomycin
Vector:	pCMV6-Entry (PS100001)
E. coli Selection:	Kanamycin (25 ug/mL)
ORF Nucleotide Sequence:	>The Viral ORF clone VC102124 represents NCBI reference of NP_740397 with codon optimized for human cell expression Red=Cloning site Blue=ORF Green=Tags(s)

GACGTTGTATACGACTCCTATAGGGCGGCCGGGAATTCGTCGACTGGATCCGGTACCGAGGAGATCTGCC
GCC**CGATCGCC**

ATGCTGATTCTGGCTTAAGAAATTTACTGAGGCCTGTAATGCCGCCCGGGGACTGGAGTGGATCGGGC
AGAAAAATTTCAAATTTATCGATTGGATCAAAAGTATGTTGCCCCAGGCTCAACTTAAGATCGATTACTT
GACAAAACCTGAAGCAACTGAATCTGTTGGAAAAACAGATTGAGACTATCAGACTGGCACCCTAGTGTT
CAAGAGAAAAATCTTTATCGAAATCAACACTCTCCACGACCTGTCCCTGAAATTCCTGCCCTCTATGCTA
GCGAGGCCAGACGATAAAGAACCTGTATATCAAGTGTTCTAATGTAATCAAGGGCGGAAACGAAATGA
GCCAGTAGCCGTGCTGATCCATGGTTCTCCCGGACAGGCAAGAGCCTGGCCACTAGCGTCTCGTAGG
ATGCTGACCGTTGAGACCGATATCTATAGCCTGCCACCTGATCCAAAATACTTTGACGGATACGACCAAC
AGTCTGTTGTAATCATGGACGACATCATGCAGAATCCATCAGGCGAGGACATGACACTTTTCTGTCAAAT
GGTGTCTTCAGTTCCTTTATCCCTCCTATGGCAGATCTGCCGACAAAGGCAAGCCCTTACTTCAAAG
TTTGTCTGGCCTCTACCAATCATACCCTTTGACCCCTCAACCGTGTCTCTCCAGCTATGGCAA
GGAGGTTTTATTCGACCTCGATATACAGGTGAAGAAAGAATACCTCCTTGATGGCAAGCTCGATATCGC
CAAATCCTTCAGACCCTGCGATGTGAACATCAAGATCGGGAACGCTAAATGTTGCCATTCTATCTGCGGG
AAGGCTGTTGAGTTCAAGGACAGGAATTCATGCACCACGCTGAGTCTGTCCAGCTGACTCTCATATCA
AGGAGGAGGACAGGCGACGAAGCTCAGCCGCACAGGCTATGGAAGCCATTTTCAA

ACGCGTACGCGGCCGCTCGAGCAGAAACTCATCTCAGAAGAGGATCTGGCAGCAAATGATATCCTGGATT
ACAAGGATGACGACGATAAGGTTTAA



[View online »](#)

Protein Sequence: >VC102124 representing NP_740397
Red=Cloning sites Green=Tags

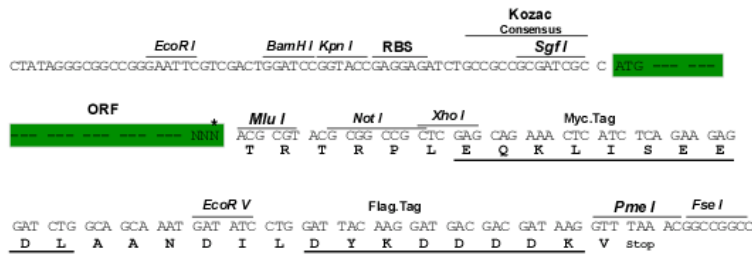
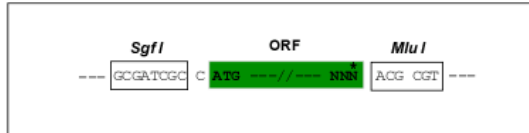
MSDSWLKKFTEACNAARGLEWIGQKISKFIDWIKSMLPQAQLKIDYLTCLKQLNLLKQIETIRLAPASV
 QEKIFIEINTLHDLCLKFLPLYASEARRIKNLYIKCSNVIKGGKRNEPVAVLIHGSPGTGKSLATSVLAR
 MLTVETDIYSLPPDPKYFDGYDQSVVIMDDIMQNPSGEDMTLFCQMVSSVPFIPPMADLPDKGKPFSTK
 FVLASTNHLLTPPTVSSLPAMARRFYFDLDIQVKKEYLLDGKLDIAKSFRCVDVNIKIGNAKCCPFICG
 KAVEFKDRNSCTTLLSLSQLYSHIKEEDRRRSSAAQAMEAIFQ

TRTRRLEQKLISEEDLAANDILDYKDDDDKV

Restriction Sites: SgfI-MluI

Cloning Scheme:

Cloning sites used for ORF Shuttling:



* The last codon before the Stop codon of the ORF

ACCN: NC_001617

ORF Size: 966 bp

OTI Disclaimer: The molecular sequence of this clone can be viewed by clicking the "ORF Nucleotide Sequence" link above. This sequence represents the NCBI reference after codon optimization for human cell expression, and retaining the same decoded protein sequence. The stop codon in the native sequence was removed to create the in-frame c-terminal fusion with a Myc-DDK tag.

Components: The ORF clone is ion-exchange column purified and shipped in a 2D barcoded Matrix tube containing 10ug of transfection-ready, dried plasmid DNA (reconstitute with 100 ul of water).

- Reconstitution Method:**
1. Centrifuge at 5,000xg for 5min.
 2. Carefully open the tube and add 100ul of sterile water to dissolve the DNA.
 3. Close the tube and incubate for 10 minutes at room temperature.
 4. Briefly vortex the tube and then do a quick spin (less than 5000xg) to concentrate the liquid at the bottom.
 5. Store the suspended plasmid at -20°C. The DNA is stable for at least one year from date of shipping when stored at -20°C.

RefSeq: NC_001617.1, NP_740397
RefSeq ORF: 966 bp
MW: 36.3 kDa