

Product datasheet for **VC102031**

E2 (NC_004500) Virus Tagged ORF Clone

Product data:

Product Type:	Expression Plasmids
Product Name:	E2 (NC_004500) Virus Tagged ORF Clone
Tag:	Myc-DDK
Symbol:	E2
Mammalian Cell Selection:	Neomycin
Vector:	pCMV6-Entry (PS100001)
E. coli Selection:	Kanamycin (25 ug/mL)



[View online »](#)

ORF Nucleotide Sequence:

>The Viral ORF clone VC102031 represents NCBI reference of NP_775308 with codon optimized for human cell expression
 Red=Cloning site Blue=ORF Green=Tags(s)

GACGTTGTATACGACTCCTATAGGGCGGCCGGAATTCGTCGACTGGATCCGGTACCGAGGAGATCTGCC
 GCC**CGCATCGCC**

ATGGAAGCTCTGTCCGACAGTTCAATGCTCTTACAGACAAGCTGATGACTATCTATGAGCGGCCAGTG
 AGTCCCTCAAAGACCAAATCGAACACTGGAACCTTTTGAGGCAGGAGCAGGTTCTGTTCCACTACGCCCG
 ACAACGGGGTGTCTCCGCCTTGGATATCAACCCGTGCCGCACTGACTATCTCTGAGGCCAAGGCTAAG
 GAGGCCATTGCCATGGTCTGCACCTCGAGGCATTGCAGAGATCTCCCTATAAAAACGAGAAGTGGACCC
 TTGTGAATACTAGTGTGAACTTTCCGCACCCCGCCAGAGAAGTCTTCAAAAAAGGGCCTAAGACCAT
 CGAAATCGTGTACGACGGGAATCCGAAAACACAATGCTTTATAACAATCTGGACCCACATTTATTTTGGAG
 GACGATGAGGGCAACTGGCAGAAGACCGAGGGACACCTTGACTACCACGGTGCATACTTTATGGACGGGC
 TCAACAAACAGTACTACATCAGGTTTGGCAGGATGCACGAAGATTTAGCGAGACCGGCGAATGGGAAGT
 GAAGTTCAATAACGAGATCCTGTTTCGCACCACTGACCTTAGCACCAACTCTGAAGAAGAAAGGGACCGC
 CCAGCACCAAGCAACCGACCCAGGTAGCCTGTCTCAAACAGCGGTGGCCAGTCAACCGTCCCTACACAGA
 GGAAACAACCATCTAAGGGTAGATACGGCAGAAAGGATTCTGGAGCCACAACAGCTTCAAGGGGTATTCA
 GAGGCGACCTAAGGCGTCTCCAGGAGGAGTAGAAGCCGATCAGGCAGTCGCTCCGGCAGTCAGGGCGAC
 GCTCGAACCTGTTGACAGTAAGAAGAGGAGAGAGAGAACGGGGTCAGGGAAGAGGCCAGGGCAGCAGAG
 GCCGGGGCGGTGAGGAGACCGTCAAGATCCGGATCCCGCAGTAGATCAGGCAGCCGAAGGAGATCAAG
 ATCAAGGGGCGCTCACGAAATGGACGCGAGAGGGGCAGGGCTGCATCTCGGGGAGGCGCGGCTATTCA
 AACCGGAGGTCTCGATCCAAAAGCGTGGGCATAGCGGCATCCCCCGAACAAGTAGGGAGCTCCTTTC
 AGGGGGTTCGGCAGGCAGCATAGCGGCAGGCTGGCTAGACTTCTCGATGACGCTCGGGATCCCCAGTTAT
 ACTGTTGAAGGGCCAGGCAAACTCTGAAATGTTACAGATACAGAGCAAAGGAAAAGTATAAGGGGTAT
 TATGATTGTTTCTCAACCACATGGTCTGGGTGTCTGCAGGGTCCAATGACCGGATCGGGCGGTCCAGGA
 TGATCATTTCTTACGAGCAAGTCCCAGAGGCAGATGTTTCTTAGCATTATGAAACTGCCCAAGGGCGT
 TGACTGGAGCCTGGGATGCTTCGATTCAATC

ACGCGTACGCGGCCGCTCGAGCAGAACTCATCTCAGAAGAGGATCTGGCAGCAAATGATATCCTGGATT
 ACAAGGATGACGACGATAAGGTTTAA

Protein Sequence:

>VC102031 representing NP_775308
 Red=Cloning sites Green=Tags

MEALSDRFNALQDKLMTIYERASESLKDQIEHWNLLRQEQVLFHYARQRGVLRRLGYQPVPALTISEAKAK
 EAIAMVLHLEALQRSPYKNEKWLVTNVSVEFRTPPENCFKKGPKTIEIVYDGNPENTMLYTIWTHIYFE
 DDEGNWQKTEGHLDYHGAYFMDGLNKQYYIRFAQDARRFSETGEWEVKFNNEILFAPVTSSTNSEEERDR
 PAPATDPGSLSQTSGGQSPVPTQRKQPSKGRYGRKDSGATTASRGIQRRPKASPRRSRSRSGRSRGSQGD
 ARTLLTVRRGERERGQGRGQGSRGRGRSRSRSGRRRSRSGRSRNGRERGRAASRRRGYS
 NRRSRSKSVGTSIPPEQVGSLSQVGRQHSRGLARLLDDARDPPVILLKGQANTLKYRYRAKEKYKGY
 YDFSTTWSWVSAGSNDRIGRSRMIISFTSKSQRMFLSIMKLPKGVDSLGCDFSI

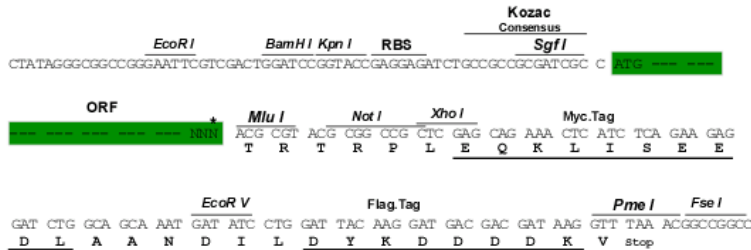
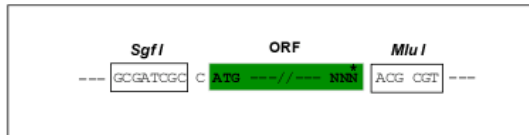
TRTRRLEQKLISEEDLAANDILDYKDDDDKV

Restriction Sites:

Sgfl-MluI

Cloning Scheme:

Cloning sites used for ORF Shuttling:



* The last codon before the Stop codon of the ORF

ACCN: NC_004500

ORF Size: 1431 bp

OTI Disclaimer: The molecular sequence of this clone can be viewed by clicking the "ORF Nucleotide Sequence" link above. This sequence represents the NCBI reference after codon optimization for human cell expression, and retaining the same decoded protein sequence. The stop codon in the native sequence was removed to create the in-frame c-terminal fusion with a Myc-DDK tag.

Components: The ORF clone is ion-exchange column purified and shipped in a 2D barcoded Matrix tube containing 10ug of transfection-ready, dried plasmid DNA (reconstitute with 100 ul of water).

Reconstitution Method:

1. Centrifuge at 5,000xg for 5min.
2. Carefully open the tube and add 100ul of sterile water to dissolve the DNA.
3. Close the tube and incubate for 10 minutes at room temperature.
4. Briefly vortex the tube and then do a quick spin (less than 5000xg) to concentrate the liquid at the bottom.
5. Store the suspended plasmid at -20°C. The DNA is stable for at least one year from date of shipping when stored at -20°C.

RefSeq: [NC_004500.1](#), [NP_775308](#)
RefSeq ORF: 1431 bp

Locus ID: 956299

MW: 54.1 kDa