

Product datasheet for **VC102017**

E1 (NC_001596) Virus Tagged ORF Clone

Product data:

Product Type:	Expression Plasmids
Product Name:	E1 (NC_001596) Virus Tagged ORF Clone
Tag:	Myc-DDK
Symbol:	E1
Mammalian Cell Selection:	Neomycin
Vector:	pCMV6-Entry (PS100001)
E. coli Selection:	Kanamycin (25 ug/mL)



[View online »](#)

ORF Nucleotide Sequence:

>The Viral ORF clone VC102017 represents NCBI reference of NP_041863 with codon optimized for human cell expression

Red=Cloning site Blue=ORF Green=Tags(s)

GACGTTGTATACGACTCCTATAGGGCGGCCGGAATTCGTCGACTGGATCCGGTACCGAGGAGATCTGCC
GCC**CGGATCGCC**

ATGAGCGACAATAAAGGAACCAAGCTGGATCCCAAAGAGTGCTGTAGCGCCTGGCTTAGCCTTGAGGCCG
AATGCTCTGACTTCTCACTCGATGGCGACTCTGGAGAACTCTTCGACGAGGGAACAGATTAGACATTTT
TGACCTGATAGATGATGGCGACGCTGTTAGGGCAATTCACGCGAGCTGTTTTGCCAGCAGGAGAGCGAG
GAAAGTGAGCAGCAGACGACGCTGCTGAAGCGGAAGTATATCTCCACAGGCCGCTCCTGCAACTCTCAC
CACAAGTGAGAGCATTAGCTTGTCCCCTCAGCATAAACCTAACGGAGACTGTTGCAACAGGATTCTGG
CCTCGAGTGTTCAAGTAAATGAAGCTGAAGACCTGAGTAACTCAGGTGGAAGAGGTGCCTGCCAACCT
CCAAGTACCGCTCAAGGAACGAAAGTCTTGAATCGTCAAGGATCTGCTGAAACATTCCAAGTAAAG
CGTTTCTCATGGCAAAGTTCAAGGAAGCCTTTGGAGTGGGGTTCGAGAAGTACCCGGCAATACAAGTC
TAAACAAGACATGCTGCCGAGATTGGGTGATCGCGGTCTACGCCGTCACGACGATCTGATCGAATCAAGC
AAACAGTTGCTGCTCCAGCATTGTGCTACATATGGCTCCACTATATGCCCCCATGTGTCTCTACTTGT
TGTGCTTCAATGTGGCAAGAGTAGAGAGACCGTGTGCAGGCTCTTGTCTACCCTGCTTCAGGTCAGTGA
AGTTACAGTCTCTCAGAGCCACCTAAATGAGGAGCGTCTGTGCTGCCTTGTGTTTGGTACAAAGGCTCA
ATGAACCTAATGTATACGCCACGAGGCTACCCGAATGGATACTGACCCAGACCCGATTAAACCACC
AGAGCGCAAACGCTACTCAATTCGACCTCTCTACCATGATTGAGTTTGTACGATCATGAGTACTTTGA
CGAGGCCACTATTGCTTACCAATATGCCAAGCTCGCAGAAACGGATGCCAACGCAAGAGCCTTCTTCCAG
AGCAACTCCAGGCACGGCTCGTTAAGGAGTGTGCAACCATGGTCCGCCATTATATGCGCGGTGAGATGA
AAGAGATGAGTATGTCAACGTGGATCCATAGGAACTGCTCACGGTTGAGTCAAATGGTCAATGGTCCGA
CATTGTGAGGTTCCATCCGATATCAGGATATTAACCTTTATCGAGTTTCTGACAGTATTCAAAGCATTCTC
CAAAATAAACCCAAACAGAAATGCTGCTGTTCCATGGTCTCCCGACACAGGCAAGAGCATGTTTACTA
TGTCTCTTATCTCAGTTCTGAAGGGAAAGGTGCTTAGCTTTGCCAACTGCAAATCCACTTTCTGGCTGCA
ACCAATTGCTGACACCAAGCTTGCCTTGATAGACGACGCTCACTCACGTGTGCTGGGAGTACATCGACCAG
TATCTTAGGAATGGTCTGGATGGAAATATGTGTGCTTGACATGAAGCACAGAGCCCCATGCCAGATGA
AGTTCCACCTCTTATGCTGACCAGTAATATTGATATTACCAAGGATCAAAGTACAAGTATCTGCATAG
TCGGGTAAAATCTTTGCTTTTAAACAAGTTTCCCCTGGATGCCAATCATAAGCCCCAGTTTGAAGTCTG
ACTGATCAATCTTGAAGTCTTCTTCAAGCGCCTTTGGACCCAGCTGGATCTCAGTATCAGGAAGACG
AGGGCGAAGACGGCAATTCACAGCGGACGTTTCTAGTGTACCGCGAGAGATTTAACGGGCCAGTC

ACGCGTACGCGGCCGCTCGAGCAGAACTCATCTCAGAAGAGGATCTGGCAGCAAATGATATCCTGGATT
ACAAGGATGACGACGATAAGGTTTAA

Protein Sequence:

>VC102017 representing NP_041863

Red=Cloning sites Green=Tags

MSDNKGTKLDPKECCSAWL SLEAECSSLDGDLEKLFDEGTDSDISDLIDDDGDAVQGNRELFCQQESE
ESEQQTQLLKRKYISPQAVLQLSPQLESISLSPQHKKRRLFEQDSGLECSVNEAEDLSETQVEEVPANP
PTTAQGTGKGLGIVKDLLKHSNVKAVLMAKFKEAFGVGF AELTRQYKSNKTCRDWVIAVYAVNDLIESS
KQLLLQHCAYIWLHYMPMCLYLLCFNVGKSRETVCRLLSTLLQVSEVQLLSEPPKLRVCAALFWYKGS
MNPNVYAHGAYPEWILTQTLINHQSANATQFDLSTMIQFAYDHEYFDEATIAIYQYAKLAETDANARAFLO
SNSQARLVKECATMVRHYMRGEMKEMSMSTWIHRKLLTVE SNGQWSDIVRFIRYQDINFIEFLT VFKAFLO
YLRNGLDGNVCLDMKHRAPCQMKFPPLMLT SNIDITKDQKYKYLHSRVKSFANNNKFPPLDANHKPQFEL
TDQSWKSFFKRLWTQLDLSQDEDEGEDGNSQRTFQCTARDFNGPV

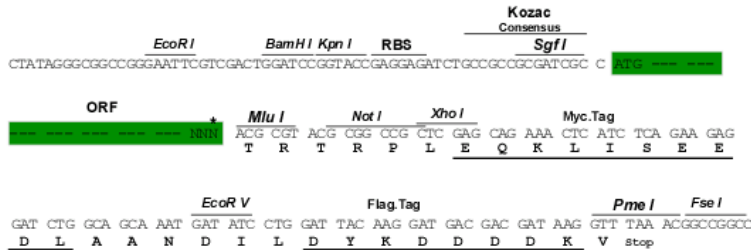
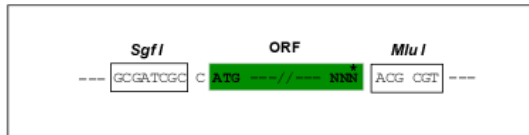
TRTRRLEQKLISEEDLAANDILDYKDDDDKV

Restriction Sites:

Sgfl-MluI

Cloning Scheme:

Cloning sites used for ORF Shuttling:



* The last codon before the Stop codon of the ORF

ACCN: NC_001596

ORF Size: 1815 bp

OTI Disclaimer: The molecular sequence of this clone can be viewed by clicking the "ORF Nucleotide Sequence" link above. This sequence represents the NCBI reference after codon optimization for human cell expression, and retaining the same decoded protein sequence. The stop codon in the native sequence was removed to create the in-frame c-terminal fusion with a Myc-DDK tag.

Components: The ORF clone is ion-exchange column purified and shipped in a 2D barcoded Matrix tube containing 10ug of transfection-ready, dried plasmid DNA (reconstitute with 100 ul of water).

Reconstitution Method:

1. Centrifuge at 5,000xg for 5min.
2. Carefully open the tube and add 100ul of sterile water to dissolve the DNA.
3. Close the tube and incubate for 10 minutes at room temperature.
4. Briefly vortex the tube and then do a quick spin (less than 5000xg) to concentrate the liquid at the bottom.
5. Store the suspended plasmid at -20°C. The DNA is stable for at least one year from date of shipping when stored at -20°C.

RefSeq: [NC_001596.1](#), [NP_041863](#)
RefSeq ORF: 1815 bp

Locus ID: 1489478

MW: 69.2 kDa