

Product datasheet for **VC101955**

L1 (NC_001591) Virus Tagged ORF Clone

Product data:

Product Type:	Expression Plasmids
Product Name:	L1 (NC_001591) Virus Tagged ORF Clone
Tag:	Myc-DDK
Symbol:	L1
Mammalian Cell Selection:	Neomycin
Vector:	pCMV6-Entry (PS100001)
E. coli Selection:	Kanamycin (25 ug/mL)



[View online »](#)

ORF Nucleotide Sequence:

>The Viral ORF clone VC101955 represents NCBI reference of NP_041837 with codon optimized for human cell expression
Red=Cloning site **Blue**=ORF **Green**=Tags(s)

GACGTTGTATACGACTCCTATAGGGCGGCCGGAATTCGTCGACTGGATCCGGTACCGAGGAGATCTGCC
 GCC**GCGATCGCC**

ATGACCTCACTGTGGCTCCCGGCTACCGGTAAAGTTTACCTGCCCCCGTCTACCCCGTAGCTAGGGTAC
 AGAGCACCGATGAGTACATTCAGAGGACCGATATTTACTATCACGCTAATTCTGACCGCCTCCTCACAGT
 CGGGCACCCGTAATTTGATGTAAGGGATACCGCTGATAACAGCAAGATTCTGGTGCCTAAAGTATCCGGG
 AACAGTATCGAGCATTAGGCTGTTGCTGCCAGACCAATAGGTTTGCCTCGTGACATGAATATAT
 ACAATCCTGAGAAGGAACGACTCGTGTGGGCTGTGGGGTCTGGAAATCGGACGGGGCAGCCTCTCGG
 GGTGGGGACCACTGGACATCCCCTTTTAACAAAGTAAAAGATACGGAGAACCCAATAACTACATCGTA
 ACGAGTAAAGACGATCGCCAGGATACTTCTTCGACCCCAACAGGTGCAGATGTTTATTATTGGATGCA
 CCCCATGCATGGGTGAATATTGGGACGCAGCAAAGCCCTGTGACCGCGATGCCGGACAGGGGAAGTGCC
 CCCGCTCGAACTATAACAGTGCATACAAGATGGCGACATGATTGACATTGGCTTCGGTAAACATCAAT
 AATAAGACCTGTCCGTGAACAGGTCCGATGTCTCTCTGGACATTGTGAACGATATATGCAAGTACCCAG
 ACTTCTTGAAGATGGCGAACGATATTTACGGCGACGCCTGCTTCTTACGCCCGCGGGGAGCAGTGCTA
 TGCCAGACACTTTTTTGTACGCGCGGGGAATGTCGGGGATGCTATTCCGAACACCGCTGTAGGTCAGGAT
 ACAAATTACATCTTCCCGCTGCCTCACAGCAGGCTCAGAATACCTGGGATCTTCAATCTACTTCCCCA
 CAGTGTACGGCAGCTTGGTGAGCACCGATGCCAGCTGTTAACAGACCTTCTGGCTGCAAAGGGCACA
 GGGTCATAACAACGGAATATGCTGGGAAAACCAACTTTTTATCACGGTAGCCGATAACACAAGAAACACC
 AACTTACCATTCTGTTTCCACGGATGGTCAGACCCCAACCGAGTATGATAGCACGAAAGTTCCGGGAT
 TCCTCCGGCATGTCGAGGAGTACGAAATCAGCATTATATTGACGCTGTGCAAGGTGCCGTTGGAGCCAGA
 GGTCTGGCCAGATCAACGCTATGAATCTTCAATCCTCGAGAATTGGCAGTTGGGCTTTGTGCCAACA
 CCCGACAATCCTATCCATGACACCTATCGGTACCTCACTTCCCAGGCGACACGGTCCCAGACAAACAGC
 CTGACCCGGAACGAAAGGACCCTTATGAACAATACAACTTTTGGACCGTCGACCTCACCGAGAAATTGAG
 CCTTGACTTGGATCAGTACAGTCTGGGAAGAAAGTTCTTGTTCAGGCCGGATTGCAGAGGGCATCTCGG
 GTTCAAAGTCAAGCGCCGCCAGAGCATCCACCCGCGCATTAAAGCGGAAGAGAAGA

ACGCGTACGCGGCCGCTCGAGCAGAAACTCATCTCAGAAGAGGATCTGGCAGCAAATGATATCCTGGATT
 ACAAGGATGACGACGATAAGGTTTAA

Protein Sequence:

>VC101955 representing NP_041837
Red=Cloning sites **Green**=Tags

MTSLWLPATGKVYLPSTPVARVQSTDEYIQRDIYYHANSRLLTVGHPYFDVVRTADNSKILVPKVSG
 NQYRAFRLLLPDPNRFALVDMNIYNPEKERLVWACRGLIIGRQPLGVGTTGHPLFNKVKDTENANNYIV
 TSKDDRQDTSFDPKQVQMFIIIGCTPCMGEYWDAKPCDADAGQGKCPPELEINSVIQDGMIDIGFNIN
 NKTLNVNRSVSLDIVNDICKYPDFLKMANDIYGDAFFYARREQCYARHFFVRGGNVGDAIPNTAVGQD
 NNYILPAASQQAQNTLGSSIIYFPTVSGSLVSTDAQLFNRPFWLQRAQGHNNGICWENQLFITVADNTRNT
 NFTISVSTDGQTPTEYDSTKVREFLRHVEEYEISIIILQLCKVPLEPEVLAQINAMNSSILENWQLGFVPT
 PDNPIHDTYRYLTSQATRCQPKQPAPERKDPYEQYNFWTVLDELTKLSLDLDQYSLGRKFLFQAGLQRASR
 VSKSSAARASTRGIKRKR

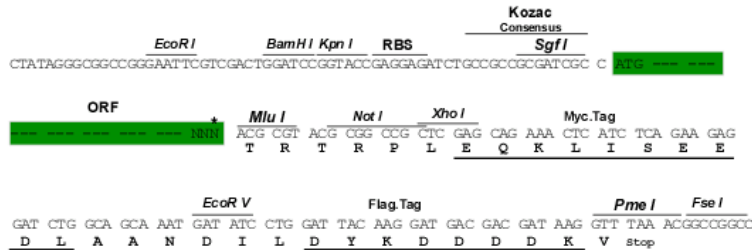
TRTRRLEQKLISEEDLAANDILDYKDDDDKV

Restriction Sites:

Sgfl-MluI

Cloning Scheme:

Cloning sites used for ORF Shuttling:



* The last codon before the Stop codon of the ORF

ACCN: NC_001591

ORF Size: 1527 bp

OTI Disclaimer: The molecular sequence of this clone can be viewed by clicking the "ORF Nucleotide Sequence" link above. This sequence represents the NCBI reference after codon optimization for human cell expression, and retaining the same decoded protein sequence. The stop codon in the native sequence was removed to create the in-frame c-terminal fusion with a Myc-DDK tag.

Components: The ORF clone is ion-exchange column purified and shipped in a 2D barcoded Matrix tube containing 10ug of transfection-ready, dried plasmid DNA (reconstitute with 100 ul of water).

Reconstitution Method:

1. Centrifuge at 5,000xg for 5min.
2. Carefully open the tube and add 100ul of sterile water to dissolve the DNA.
3. Close the tube and incubate for 10 minutes at room temperature.
4. Briefly vortex the tube and then do a quick spin (less than 5000xg) to concentrate the liquid at the bottom.
5. Store the suspended plasmid at -20°C. The DNA is stable for at least one year from date of shipping when stored at -20°C.

RefSeq: [NC_001591.1, NP_041837](#)
RefSeq ORF: 1527 bp

Locus ID: 1489446

MW: 57.5 kDa