

Product datasheet for VC101922

E2 (NC_001587) Virus Tagged ORF Clone

Product data:

Product Type:	Expression Plasmids
Product Name:	E2 (NC_001587) Virus Tagged ORF Clone
Tag:	Myc-DDK
Symbol:	E2
Mammalian Cell Selection:	Neomycin
Vector:	pCMV6-Entry (PS100001)
E. coli Selection:	Kanamycin (25 ug/mL)
ORF Nucleotide Sequence:	>The Viral ORF clone VC101922 represents NCBI reference of NP_041810 with codon optimized for human cell expression Red=Cloning site Blue=ORF Green=Tags(s)

GACGTTGTATACGACTCCTATAGGGCGGCCGGAATTCGTCGACTGGATCCGGTACCGAGGAGATCTGCC
GCC**CGATCGC**C

ATGATGGAGACTCTCTGCAAGAGACTCTCCGCATGCCAAGATGCTATATTGGAGCTCTATGAGCGAGACT
CCATTCATCTGTCAGATCACATAGACCCTGGAAGCATGTGAGGCTCGAGAATGTGCTGCTGCACAAAGC
AAGAGAGATGGGTTGCAGTCAGTCAATCAACAGGCGGTGCCTAGTCTCGCTGTGAGTCGGAGCAAGGGC
CACAATGCCATTGAGCTGCAATTGGCTCTGGAATCTCTGAACGAAAGTAGTTATAACACGGAAGAATGGA
CTCTGCAGCAGACCAGCTGGGAGCAGTGGGTAACAGACCCCAAGCAATGCTTCAAAAAAGGAGGCAAAAC
TGTCGAGGTTTCGCTATGATTGCGACAAAGACAACACTATGCAGTATGTGGTGTGGACTTTTCGTTTACTAC
TGGCTGGAGGGAAAATGGTACAAAGTGTCTTCCCATGTTGACTATAATGGCATCTACTACGAGACCCAGG
ACAACGAGAAAGTTTATTATACACAGTTCGACAGGGACGCAAAGCGGTATGGCGTTAAGGGAATCTGGGA
CGTTTGCATGGGGGCAAAGTGATTTGTTTCGCTCCTGTGTTTTACCTTGTGAGGTGTCAACCCCGAG
ATCGTCCGACCTTTCACACGAGCAACTTAGCAACGCCAAGATGCGGGGTGCCCACTCGAAACGGC
ACAGACAGTGCACCTGACGAAGGCCACTTGACTTTGTTTCACAATCTCAACCGACACTGACAGCAG
TACACAATGCACACTTCACAATGTCGCGCAATAGTGCACCTGAAGGGAGACAAAATTCACTTAAGTGT
CTGCGGTACCGGATGCATAAAGGTATAGTCACCTGTTCAACAAGTTACGACGACTGGCATTGGACCA
ACAATACCAACAGTAAGTGCAGGTAATTACATTCATGTTCTCAAGCACCTCACAGCAGAAACAGTTCCT
GCAGTGCAGCAAGATCCCACCCACAATTCAGTGTTCATCCGGCTACATGTCAATC

ACGCGTACGCGGCCGCTCGAGCAGAAACTCATCTCAGAAGAGGATCTGGCAGCAAATGATATCCTGGATT
ACAAGGATGACGACGATAAGGTTTAA



[View online »](#)

Protein Sequence: >VC101922 representing NP_041810
Red=Cloning sites Green=Tags

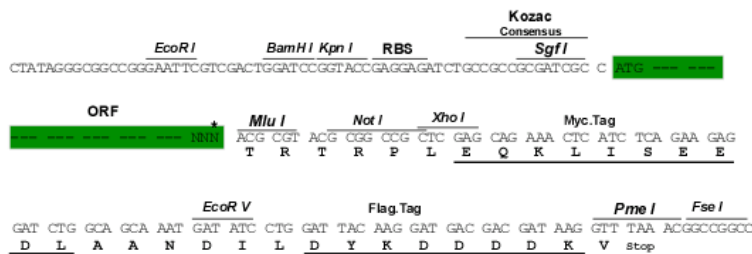
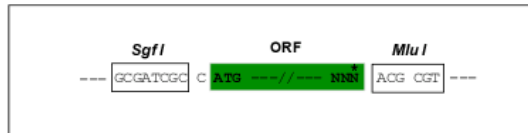
MMETLCKRLSACQDAILELYERDSIHLSDHIDHWKHVRLNENLLHKAREMGLQSVNQQAVPSLAVSRSKG
 HNAIELQLALESLNESSYNTTEWTLQQTWEQWVTDPKQCFKGGKTVVEVRYDCDKDNTMQYVVWTFVYY
 WLEGGWKYVSSHVDYNGIYYETQDNEKVYTTQFDRDAKRYGVKGIWDVCMGGKVICFAPVFSPEVSTPE
 IVRPLHTSNSSNAQDAGVPTKRHRQCDEPLDFVHNLQPTTDSSTQCTLHNVAPIVHLKGDKNLKC
 LRYRMHKGYSHLFNNVTTTWHWTNNTNSKCGVITFMFSSTSQQKQFLQCAKIPPTISVSSGYMSI

TRTRRLEQKLISEEDLAANDILDYKDDDDKV

Restriction Sites: SgfI-MluI

Cloning Scheme:

Cloning sites used for ORF Shuttling:



* The last codon before the Stop codon of the ORF

ACCN: NC_001587

ORF Size: 1035 bp

OTI Disclaimer: The molecular sequence of this clone can be viewed by clicking the "ORF Nucleotide Sequence" link above. This sequence represents the NCBI reference after codon optimization for human cell expression, and retaining the same decoded protein sequence. The stop codon in the native sequence was removed to create the in-frame c-terminal fusion with a Myc-DDK tag.

Components: The ORF clone is ion-exchange column purified and shipped in a 2D barcoded Matrix tube containing 10ug of transfection-ready, dried plasmid DNA (reconstitute with 100 ul of water).

- Reconstitution Method:**
1. Centrifuge at 5,000xg for 5min.
 2. Carefully open the tube and add 100ul of sterile water to dissolve the DNA.
 3. Close the tube and incubate for 10 minutes at room temperature.
 4. Briefly vortex the tube and then do a quick spin (less than 5000xg) to concentrate the liquid at the bottom.
 5. Store the suspended plasmid at -20°C. The DNA is stable for at least one year from date of shipping when stored at -20°C.

RefSeq: NC_001587.1, NP_041810
RefSeq ORF: 1035 bp
Locus ID: 1489430
MW: 39.8 kDa