

## Product datasheet for **VC101916**

### E2 (NC\_001586) Virus Tagged ORF Clone

#### Product data:

Product Type:	Expression Plasmids
Product Name:	E2 (NC_001586) Virus Tagged ORF Clone
Tag:	Myc-DDK
Symbol:	E2
Mammalian Cell Selection:	Neomycin
Vector:	pCMV6-Entry (PS100001)
E. coli Selection:	Kanamycin (25 ug/mL)
ORF Nucleotide Sequence:	>The Viral ORF clone VC101916 represents NCBI reference of NP_041804 with codon optimized for human cell expression Red=Cloning site Blue=ORF Green=Tags(s)

GACGTTGTATACGACTCCTATAGGGCGGCCGGGAATTCGTCGACTGGATCCGGTACCGAGGAGATCTGCC  
GCC**CGATCGCC**

ATGGAACCCCTGGCTAAAAGACTGGATGCCTGTCAGGAGCAGCTGCTGGAAGTGTATGAGGAAGATTCCA  
AGCACCTCGAAAAACATGTGCAGCACTGGAAGTGTCTCAGAATCGAGGCAGCCTTGCTCTTTAAGGCCAG  
AGAGATGGGATACGCGCAAGTCGGCCACCAAATGTACCAGCACTCGAAATTAGCCGCGCGAAGGCACAC  
GTGGCAATCGAGATTCAACTTGCCTGGAGACTGCTTCAGTCCACATTTGGTACCGAGCCTTGGACAC  
TCCAAGAGACGAGTTATGAAATGTGGCACGCAGAGCCAAAGAAATGTTTGAAGAAGCAGGGTAGGACAGT  
AGAAGTTGTCTTTGACGGGAATCCAGAAAACGCAATGCACTATACTGCTTGGACATTTATTTACGTCAG  
ACACTGGATGGCACCTGGTGCAAAGTACGGCCACGTTTGTACGCTGGTCTGTATTACATTGTAGATA  
ACATGAAGCAGTTTTACTGCACTTTAAAAATGAGGCAAAAAAGTACGGAGTAACCGGTCACTGGGAAGT  
GCACGACGGAACACAGGTGATTGTGAGTCCCGCCTCTATCCTCTACTACCACCACTGAAGCCGAAGTC  
TCTTCATCTGGTCTCACTGAACTCGTCCAGACTACCGACCTGTACAATACTACCCCACTCCTACCACAA  
TCACTAGAAGCAATTGCGATCCCGATGGTACTGATGGCATCCTTTACAAAGACCCAAACCCCACTACCCC  
CCCCGAAAGCGCTACAGACAGTCTCTGCAGCCACCTACCAAACCTGCAGCATTACGGGTAACCAAC  
GTGCCAGTGGACCCTGGGTCTCAGCGCGTGACATCCGACAACAACAACCAGCGCGGAACCCGTGCG  
GCAATCAGACAACACCAGTTATCCATCTGCAGGGCGACCCAAATTGTCTGAAGTGTCTTCGGTGGCGCTT  
GAAAAAGAACTGTTCCCATCTGTTACAGCAAGTCTCTCCACCTGGCACCTCACCAAAAAGACTACACC  
CGGGACAGCAAAGATGGGATCATCACCATTCACTACTACAACGAAGAGCAGAGGGACAAATTTCTGTCTA  
CTGTGAAACTCCCTCCCGCATCAAGTCATGTATCGGCTATATGTCAATGCTCCAGTTTCATG

**ACGCGT**ACGCGGCCGCTCGAGCAGAAACTCATCTCAGAAGAGGATCTGGCAGCAAATGATATCCTGGATT  
ACAAGGATGACGACGATAAGGTTTAA



[View online »](#)

**Protein Sequence:** >VC101916 representing NP\_041804  
Red=Cloning sites Green=Tags

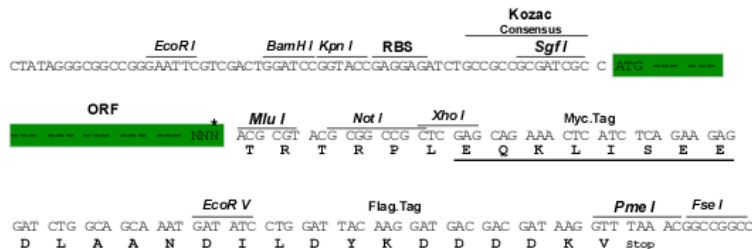
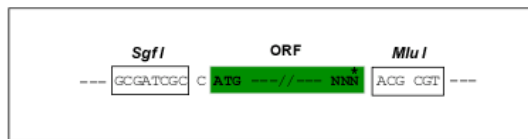
METLAKRLDACQEQLLELYEEDSKHLEKHVQHWKCLRIEAALLFKAREMGYAQVGHQIVPALEISRAKAH  
 VAIEIQLALETL LQSTFGTEPWT LQETS YEMWHAEPKCKLKKQGRTEVVFVDFGNPENAMHYTAWTFIYVQ  
 TLDGTWCKVYGHVCYAGLYYIVDNMKQFYCNFKNEAKKYGVTGQWEVHDGTQVIVSPASISSTTTTEAEV  
 SSSGLTELVTQTTDL YNTTPTPTTTITRSNCDPDGTDGIL YKDPTPTTPPRKRYRQSLQPPTKHLQHYGVNT  
 VPVDPGSQRVTS DNNNNQRNRCGNQTT PVIHLQGDPNCLKCLRWRLLKKNCSHLFTQVSSTWHLTEKDYT  
 RDSKDGIIITIHYYNEEQDKFLSTVKLPPGIKSCIGYMSMLQFM

TRTRRLEQKLISEEDLAANDILDYKDDDDKV

**Restriction Sites:** SgfI-MluI

**Cloning Scheme:**

Cloning sites used for ORF Shuttling:



\* The last codon before the Stop codon of the ORF

**ACCN:** NC\_001586

**ORF Size:** 1182 bp

**OTI Disclaimer:** The molecular sequence of this clone can be viewed by clicking the "ORF Nucleotide Sequence" link above. This sequence represents the NCBI reference after codon optimization for human cell expression, and retaining the same decoded protein sequence. The stop codon in the native sequence was removed to create the in-frame c-terminal fusion with a Myc-DDK tag.

**Components:** The ORF clone is ion-exchange column purified and shipped in a 2D barcoded Matrix tube containing 10ug of transfection-ready, dried plasmid DNA (reconstitute with 100 ul of water).

**Reconstitution Method:**

1. Centrifuge at 5,000xg for 5min.
2. Carefully open the tube and add 100ul of sterile water to dissolve the DNA.
3. Close the tube and incubate for 10 minutes at room temperature.
4. Briefly vortex the tube and then do a quick spin (less than 5000xg) to concentrate the liquid at the bottom.
5. Store the suspended plasmid at -20°C. The DNA is stable for at least one year from date of shipping when stored at -20°C.

**RefSeq:** [NC\\_001586.1](#), [NP\\_041804](#)

**RefSeq ORF:** 1182 bp

**Locus ID:** 1489423

**MW:** 45.0 kDa