

Product datasheet for VC101910

E2 (NC_001583) Virus Tagged ORF Clone

Product data:

Product Type:	Expression Plasmids
Product Name:	E2 (NC_001583) Virus Tagged ORF Clone
Tag:	Myc-DDK
Symbol:	E2
Mammalian Cell Selection:	Neomycin
Vector:	pCMV6-Entry (PS100001)
E. coli Selection:	Kanamycin (25 ug/mL)
ORF Nucleotide Sequence:	>The Viral ORF clone VC101910 represents NCBI reference of NP_041785 with codon optimized for human cell expression Red=Cloning site Blue=ORF Green=Tags(s)

GACGTTGTATACGACTCCTATAGGGCGGCCGGAATTCGTCGACTGGATCCGGTACCGAGGAGATCTGCC
GCC**CGATCGCC**

ATGAAAACTCTGCCAGCGACTCAACGCCTGCCAGGAGAAGATTCTCGACTACTATGAGCTGGATAGCA
ACAACTGACGGACCAGATCGACTATTGGAAGCTGGTGCCTACGAATGCGCTATTTTTATAAAGCCCG
CGAGGAAACATGCAGTGTATTAACCACCAAGTGGTCCCTTCTACTGTTGTCTGCAAACAAAGGCTTG
CAAGCTATCGAGATCCATATCGCTCTGCAGTCCCTTGATTAACACCGACTACAATACCGAGCTTGGACCA
TGCGAGATACCAGTTACGAAATGTACATGACTGAACCTAAGCACTGTTTCAAAAAAGAAGGAACACAGT
GACAGTGGTGTGGATTGCAACAAGGAAAAACAATGGATTACATTTCGCTGGAAGTACGTCTATTATAAG
ACCGACATTGGCTGGTGTAAAGGCACCGGAGACGTTGACGCCAAAGGAATATATTATACGCAGGGCGCAT
ATAAACAGTATTATGTGGACTTCAAGCAAGAGGCCGAGAAGTATGGGACCGGAGTGAATGGGCAGTGCA
CGTGTGCGGGCAGGTCATTTGCTGCCCGGAATTTGTTAGTTCACTTGTCCAGTAATCAGATCTCTACA
GCGAAGACCGGAAACCCGCTCTCAAATGCCACCACCCAGACCACAGAGGCTACGTACCTGTAGGCACCA
AAGAAACAGAAGCCCTTATCCAGGAAACGGCGCCCTGTCCGCCCCTGATACAACCGTTACAACAGT
TACTACAGTGACAACCTGCCGCACTCAGCCAGGCGAGTCAGTCGATTATACCAATAACAACCTGCACTCT
ACGAGTGGGGACACCATCCAGGCCGGATACAAGCTCTGATCAGACAGTGTTTCATCGTACACTGAAGG
GCGATACCAATTTCTGAAATGCCTCAGATACCGTTCAAGAAACATAAAGGACTCTACTGTAACGTTAG
TTCTACGTGGCATTGGACAAGTAATGACACTAATCAGCAGGGTATCGTAACTATAACTTTTAACTCTATC
ACACAGCGGAACAATTTTCTCACAACCGTGAAAATTCCACAGTCAATTACTTCAACCCCTTGGCATCATGT
CCCTG

ACGCGTACGCGGCCGCTCGAGCAGAAACTCATCTCAGAAGAGGATCTGGCAGCAATGATATCCTGGATT
ACAAGGATGACGACGATAAGGTTTAA



[View online »](#)

Protein Sequence: >VC101910 representing NP_041785
 Red=Cloning sites Green=Tags

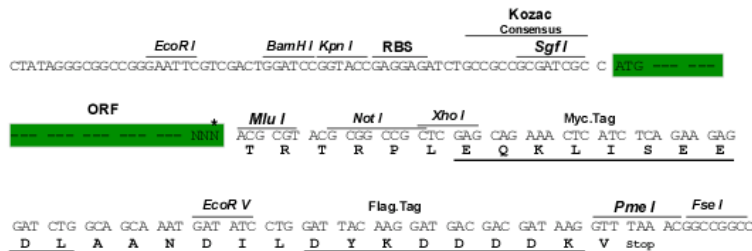
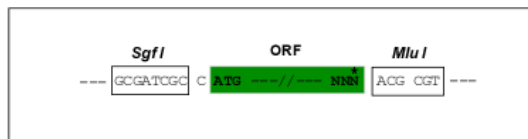
MENLCQRLNACQEKILDYIELDNKLTDQIDYWKLVRYECAIFYKAREGNMQCINHQVVPSTVVCKQKAW
 QAIEIHIALQSLINTDYNTEAWTMRDTSYEMYMTEPKHCFKKEGTTVTVVFDCKNKENTMDYIRWKYVYK
 TDIGWCKGTGDVDAKGIYYTQGAYKQYYVDFKQEAKEYGTGVQWAVHVCQVVICPEFVSSTCSSNQIST
 AKTAEPVSNATTQTTEAYVPVGTKETAPYPGKRRRLSGPDTTVTVTVTAAATQPGQSVDYTNNNLHS
 TSGGHPGRDTSDDQTVFIVHLKGDNTSLKCLRYRFKHKHGLYCNVSSSTWHWTSNDTNQQGIVTITFNSI
 TQRNNFLTTVKIPQSITSTLGIMSL

TRTRRLEQKLISEEDLAANDILDYKDDDDKV

Restriction Sites: SgfI-MluI

Cloning Scheme:

Cloning sites used for ORF Shuttling:



* The last codon before the Stop codon of the ORF

ACCN: NC_001583

ORF Size: 1125 bp

OTI Disclaimer: The molecular sequence of this clone can be viewed by clicking the "ORF Nucleotide Sequence" link above. This sequence represents the NCBI reference after codon optimization for human cell expression, and retaining the same decoded protein sequence. The stop codon in the native sequence was removed to create the in-frame c-terminal fusion with a Myc-DDK tag.

Components: The ORF clone is ion-exchange column purified and shipped in a 2D barcoded Matrix tube containing 10ug of transfection-ready, dried plasmid DNA (reconstitute with 100 ul of water).

Reconstitution Method:

1. Centrifuge at 5,000xg for 5min.
2. Carefully open the tube and add 100ul of sterile water to dissolve the DNA.
3. Close the tube and incubate for 10 minutes at room temperature.
4. Briefly vortex the tube and then do a quick spin (less than 5000xg) to concentrate the liquid at the bottom.
5. Store the suspended plasmid at -20°C. The DNA is stable for at least one year from date of shipping when stored at -20°C.

RefSeq: [NC_001583.1](#), [NP_041785](#)

RefSeq ORF: 1125 bp

Locus ID: 1496945

MW: 42.6 kDa