

## Product datasheet for **VC101904**

### E2 (NC\_001526) Virus Tagged ORF Clone

#### Product data:

Product Type:	Expression Plasmids
Product Name:	E2 (NC_001526) Virus Tagged ORF Clone
Tag:	Myc-DDK
Symbol:	E2
Mammalian Cell Selection:	Neomycin
Vector:	pCMV6-Entry (PS100001)
E. coli Selection:	Kanamycin (25 ug/mL)
ORF Nucleotide Sequence:	>The Viral ORF clone VC101904 represents NCBI reference of NP_041328 with codon optimized for human cell expression Red=Cloning site Blue=ORF Green=Tags(s)

GACGTTGTATACGACTCCTATAGGGCGGCCGGAATTCGTCGACTGGATCCGGTACCGAGGAGATCTGCC  
GCC**CGATCGCC**

ATGGAGACTCTGCCAAAGACTCAACGTTTGTGAGGACAAAATCCTGACACACTACGAGAACGATTCAA  
CAGACCTCAGAGACCATATTGACTACTGGAAGCATATGCGCCTGGAATGTGCCATATACTATAAAGCTAG  
AGAAATGGGGTTAAGCACATCAACCATCAAGTCGTGCCTACTCTGGCTGTATCTAAAAATAAAGCGCTG  
CAGGCAATTGAGCTTCAGCTCACCTCGAACTATATATAACTACAATACTCTAATGAAAAATGGACAC  
TTCAGGACGTGTCTTTGGAAGTTTACCTCACCGCTCCAACAGGGTGTATCAAGAAACACGGCTACACAGT  
CGAGGTTCAATTTGATGGCGATATCTGTAACACCATGCACTACACGAACTGGACCCACATCTATATTTGT  
GAGGAAGCCTCTGTTACCGTCGTGGAGGGCCAGGTGGATTACTACGGCCTTTATTACGTGCATGAGGGCA  
TAAGAACGTATTTCTCCAGTTTAAAGGATGACGCTGAGAAGTATAGTAAAAACAAGGTGTGGGAAGTGCA  
TGCCGGCGGTGAGGTCATCCTGTGCCCTACTAGTGTGTTGAGCTCCAACGAAGTCAGCAGTCCCAGATA  
ATCCGACAACACCTTGCAAACCACCCCGCTGCAACACATACTAAAGCCGTGGCGCTCGGAACTGAAGAGA  
CACAACCTACCATCCAGAGACCCCGCAGCGAGCCTGATACGGGAACCCTTGCCACACAACCAAATTGCT  
CCACAGAGACAGTGTGGACTCAGCGCAATTCTGACGGCATTTAATTCAAGCCATAAGGGCCGCATCAAT  
TGTAACCTAATACTACCCCATTTGTGCACCTCAAGGGAGATGCCAATAGTTGAAGTGTCTTCGCTACC  
GGTTTAAAAAACACTGCACTCTGTACACAGCCGTGTCCTCAACTTGGCATTGGACGGGCCACAACGTCAA  
ACATAAAGTGCTATTGTACCCTGACCTATGATTCAGTGGCAGCGGACCAGTTTCTGTACAGGTC  
AAAATTCAAAGACGATTACTGTCTCTACTGGCTTCATGAGTATT

**ACGCGT**ACGCGGCCGCTCGAGCAGAACTCATCTCAGAAGAGGATCTGGCAGCAAATGATATCCTGGATT  
ACAAGGATGACGACGATAAGGTTTAA



[View online »](#)

**Protein Sequence:** >VC101904 representing NP\_041328  
 Red=Cloning sites Green=Tags

METLCQRLNVCQDKILTHYENDSTDLRDHIDYWKHMRLECAIYYKAREMGFKHINHQVVPPLAVSKNKAL  
 QAIELQLTLETIYNSQYSNEKWTLDVLSLEVYL TAPTGCIIKKHGYTVEVQFDGDCNTMHYTNWTHIYIC  
 EEASVTVVEGQVDYYGLYYVHEGIRTYFVQFKDDAEKYSKNKVVEVHAGGQVILCPTSVFSSNEVSSPEI  
 IRQHLANHPAATHTKAVALGTEETQTTIQRPRSEPDTGNPCHTTKLLHRDSVDSAPILTAFNSSHKGRIN  
 CNSNTTPIVHLKGDANTLKCLRFRFKHCTLYTAVSSTWHWTGHNVKHKS AIVTLTYDSEWQRDQFLSQV  
 KIPKTIIVSTGFMSI

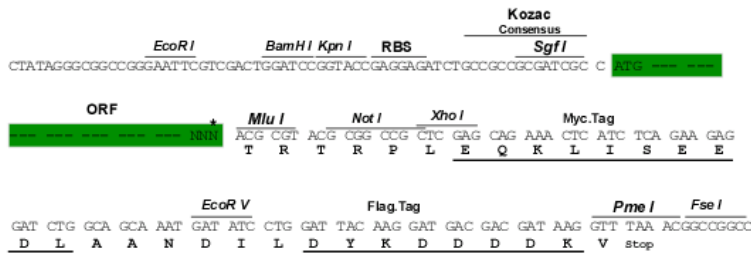
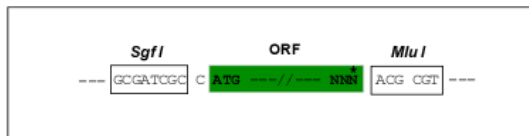
TRTRRLEQKLISEEDLAANDILDYKDDDDKV

**Chromatograms:** [https://cdn.origene.com/chromatograms/ja1930\\_a02.zip](https://cdn.origene.com/chromatograms/ja1930_a02.zip)

**Restriction Sites:** SgfI-MluI

**Cloning Scheme:**

Cloning sites used for ORF Shuttling:



\* The last codon before the Stop codon of the ORF

**ACCN:** NC\_001526

**ORF Size:** 1095 bp

**OTI Disclaimer:** Due to the inherent nature of this plasmid, standard methods to replicate additional amounts of DNA in E. coli are highly likely to result in mutations and/or rearrangements. Therefore, OriGene does not guarantee the capability to replicate this plasmid DNA. Additional amounts of DNA can be purchased from OriGene with batch-specific, full-sequence verification at a reduced cost. Please contact our customer care team at [custsupport@origene.com](mailto:custsupport@origene.com) or by calling 301.340.3188 option 3 for pricing and delivery.

The molecular sequence of this clone can be viewed by clicking the "ORF Nucleotide Sequence" link above. This sequence represents the NCBI reference after codon optimization for human cell expression, and retaining the same decoded protein sequence. The stop codon in the native sequence was removed to create the in-frame c-terminal fusion with a Myc-DDK tag.

<b>Components:</b>	The ORF clone is ion-exchange column purified and shipped in a 2D barcoded Matrix tube containing 10ug of transfection-ready, dried plasmid DNA (reconstitute with 100 ul of water).
<b>Reconstitution Method:</b>	<ol style="list-style-type: none"><li>1. Centrifuge at 5,000xg for 5min.</li><li>2. Carefully open the tube and add 100ul of sterile water to dissolve the DNA.</li><li>3. Close the tube and incubate for 10 minutes at room temperature.</li><li>4. Briefly vortex the tube and then do a quick spin (less than 5000xg) to concentrate the liquid at the bottom.</li><li>5. Store the suspended plasmid at -20°C. The DNA is stable for at least one year from date of shipping when stored at -20°C.</li></ol>
<b>RefSeq:</b>	<u>NC_001526.2, NP_041328</u>
<b>RefSeq ORF:</b>	1095 bp
<b>Locus ID:</b>	1489080
<b>UniProt ID:</b>	<u>P03120</u>
<b>MW:</b>	41.8 kDa