

Product datasheet for **VC101892**

E1 (NC_014835) Virus Tagged ORF Clone

Product data:

Product Type:	Expression Plasmids
Product Name:	E1 (NC_014835) Virus Tagged ORF Clone
Tag:	Myc-DDK
Symbol:	E1
Mammalian Cell Selection:	Neomycin
Vector:	pCMV6-Entry (PS100001)
E. coli Selection:	Kanamycin (25 ug/mL)



[View online »](#)

ORF Nucleotide Sequence:

>The Viral ORF clone VC101892 represents NCBI reference of YP_004111311 with codon optimized for human cell expression

Red=Cloning site Blue=ORF Green=Tags(s)

GACGTTGTATACGACTCCTATAGGGCGGCCGGAATTCGTCGACTGGATCCGGTACCGAGGAGATCTGCC
GCC**CGATCGCC**

ATGGGCGAACCGCATAAAGGGACCTCCAATATAGACTGTCTTGAAGATATCAACGAGTGGTGCTTCATCA
CAGAAGCCGATTGTGTGGATAGTGCCGAGACTCTCAGTGAGCTCTTCGATGCTGACACCGATGCCTCTAA
TATTTCCAATTTGATCGATGATGACTTGGACTCCCTGAGTCAGGAAAACAGCCTCGCCCTCTTCAAC
AACCAGGTCGCGGAAGAATGTGACCGGGCAATTACTAATCTGAAGAGAAAGTTTCATCGCATCCCCGAGC
ACATTGTCGAGAAGTCTCACCCGATTGCAAGCGGTGCACATATCCCCTCAGCGAAAAAGCATTCTTAA
AAGGAACTTTTTGAGGACAGTGGGATAGAGCACGACGAAACCACAGATTCTGTAGTGCAGGTGGAGCCC
TTGGAGAACAGTAACAACGGGGCAACTCAGGAGGAAAAATGCCATCTGCAATCTTCCAACGTGAAGGCAA
CCTTGTACAGTAAGTTCAAGGAGCGTTCAACGTGAGTTTACGGAAATCTCAAGAACTCAAGAGCGA
CAAGACATGTAATCATAACTGGTTGATCGTGGCATTGCTGTTCCAGGATGATTTGATTGAGGCCTCTAAA
ACTCTGATGCAGCAACATTGCGACTACCTGCAATGATCATTTCTGGCTTACCCTTCTTTACCTCGTTG
AGTTCAAATCCACGAAAAACAGAGAGACTGTCTTAAGCTTATCACCCAGATGCTGAATGTGAATGAACG
GCAAGTGTGTGCGAGCCTCCTAGAATACGCTCCACAGCAACAGCTATGTTTTTTACAGGAAGGCTCTG
GCCAATATTGGTTTTCAAATGCGGAGCCTACCCCAAGTGGATGGTCAAACCTGACCATGGTCGATACCAAT
TCGCCGCTGTGAGACATTCAAAGTGTGAGAAATGGTACAGTGGGCTATGATAACGACTATACGGAGA
GTCTCAGATTGCCTTTTATTGCTCAGTACGCCGATATCAACAGCAACGACCCGCTTCTCTGGAGTCC
AACCAGCAGTGAATATGTGAGGACTGTTGCAGCATGGTTCGGCTGTACAAGCGGCAAGAAGCTCAGGA
ATATGTCCATGGGCGCCTGGATTAGGAAATGCTGCTCCACAGTCCAGAGGGAGATGGGTGGAAAGAAAT
CGCCAAATTTCTGAAATTTCAACATGTGAATATGCTTAGTCTGCTCATCGCCTTGAACAGTTCTTCAAA
AACATCCCGAAGAAGTCTTGCAATGTTATCTACGGCCCTCCTGATAGCGGAAAGAGCTATTTCTGTTTCT
CTCTGATCAGGTTGCTCCAGGTAAGTGGTGGAGCTTCAATGAATAGAAATAGTCACTTTTGGACACAGCC
TTTGATCGATGCTAAGGTAGGATGCTCGATGATGCCACATCCCCTGTTGGACCTTCTTGATACATAC
ATGCGGAATGCCTTCGATGGAATTTCTGTGAGCATTGACGTGAAACACAAGAATTTGAGCAGATTAAT
TGCCACCCATGATTACTACCAATATTGCGGTGCCAAGGAGCCACTCTGAAGTACCTCCAGTCTCG
GCTCACCTGCTTGAATTTCTAACACCATGCCCTTCAACGATGTGGCAAGCCTCTCTTAATATCACA
ACTGAGTCTGGCGATGTTCTTCAAGTCTTTAGACAGCTTGAAGTGGAAAGAGGACGATGGGGACT
CTGCAGACACCGATCGGACGTTCTGCTGCACTGCAAGGAATGCAACGATTCAAAT

ACGCGTACGCGGCCGCTCGAGCAGAACTCATCTCAGAAGAGGATCTGGCAGCAAATGATATCCTGGATT
ACAAGGATGACGACGATAAGGTTTAA

Protein Sequence:

>VC101892 representing YP_004111311

Red=Cloning sites Green=Tags

MGEPHKGTSNIDCLEINWCFIGTEADCVDSAETLSELDADTDASNISNLIDDDDLDSLQGNLALFN
NQVAEECDRAITNLKRKFIASPEHIVEKSSPRLQAVHISPQRKSI SKRKL FEDSGIEHDETTDSVVQVEP
LENSNNGATQEENAILQSSNVKATLYSKFKERFNVSFTEISRNFKSDKTCNHNWLIVAFVQDDL IEASK
TLMQQHCDYLQMIISGFTVLYLVEFKSTKNRETVLKLITQMLNVNERQVLCPPRIRSTAMFFYRKAL
ANIGFKCGAYPQWMVKLTMVDHQFAAAETFKLSEMVQWAYDNDYTEESQIAFYAAYADINSNAAAFLES
NQQVKYVRDCCSMVRLYKRQELRNMSMGAWIRKCCSTVPEGDGWKEIAKFLKFQHVNMLSLLIALKQFFK
NIPKKSICIVYGPDSGKSYFCFLIRLLQGVVSMNRNSHFWTQPLIDAKVGLDDATFPCWTFLDY
MRNAFDGNSVSDVYKHNLLQIKLPPMIITNIAVPKEPTLKYLSRLTCEFPNTMPFNDVYKPLFNIT
TECWAMFFSKFFRQLELEEDDGDSADTDRFTCCTARNANDSN

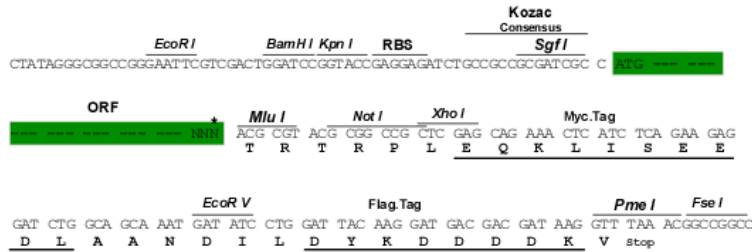
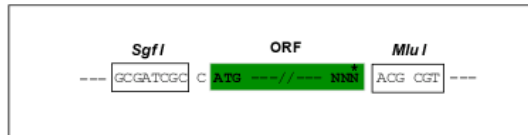
TRTRRLEQKLISEEDLAANDILDYKDDDDKV

Restriction Sites:

Sgfl-MluI

Cloning Scheme:

Cloning sites used for ORF Shuttling:



* The last codon before the Stop codon of the ORF

ACCN: NC_014835

ORF Size: 1806 bp

OTI Disclaimer: The molecular sequence of this clone can be viewed by clicking the "ORF Nucleotide Sequence" link above. This sequence represents the NCBI reference after codon optimization for human cell expression, and retaining the same decoded protein sequence. The stop codon in the native sequence was removed to create the in-frame c-terminal fusion with a Myc-DDK tag.

Components: The ORF clone is ion-exchange column purified and shipped in a 2D barcoded Matrix tube containing 10ug of transfection-ready, dried plasmid DNA (reconstitute with 100 ul of water).

Reconstitution Method:

1. Centrifuge at 5,000xg for 5min.
2. Carefully open the tube and add 100ul of sterile water to dissolve the DNA.
3. Close the tube and incubate for 10 minutes at room temperature.
4. Briefly vortex the tube and then do a quick spin (less than 5000xg) to concentrate the liquid at the bottom.
5. Store the suspended plasmid at -20°C. The DNA is stable for at least one year from date of shipping when stored at -20°C.

RefSeq: [NC_014835.1, YP_004111311](#)
RefSeq ORF: 1806 bp

Locus ID: 10067313

MW: 68.9 kDa