

Product datasheet for **VC101885**

E1 (NC_014956) Virus Tagged ORF Clone

Product data:

Product Type:	Expression Plasmids
Product Name:	E1 (NC_014956) Virus Tagged ORF Clone
Tag:	Myc-DDK
Symbol:	E1
Mammalian Cell Selection:	Neomycin
Vector:	pCMV6-Entry (PS100001)
E. coli Selection:	Kanamycin (25 ug/mL)



[View online »](#)

ORF Nucleotide Sequence:

>The Viral ORF clone VC101885 represents NCBI reference of YP_004169293 with codon optimized for human cell expression

Red=Cloning site Blue=ORF Green=Tags(s)

GACGTTGTATACGACTCCTATAGGGCGGCCGGAATTCGTCGACTGGATCCGGTACCGAGGAGATCTGCC
GCC**CGATCGC**C

ATGGCAGACAAGAAGGGCATCAAGAGCAGCAAGCTGTCCAACAAATGCAAAGAGTGGTTCATCATTGAGG
AAGCCGACTGCGACGAGCTGACAGAGATGGATAAAATCTTCAAGAATCCGACGCGCAGCATCGTGAGTAA
CCTGCTGGATGACAGTGTAGAGTGCACCAAGGCAATTCCTTGAGCTGCTTAATGAGCAGCTCCTGCAG
GAGAGCAATCTGCAACTGGCTGACTTGAAGAGAAAATATCTCAGCCCCGAGAAGGATTCTGTGTTGGCCC
TGAGTCTCAGCTCGAGAGCGTAAGCATTAGCCCTCACCCAAAGAACTCACGACGCCGCCTGTTTGTATGA
CTCAGGAATAGAGAACGAAGCCGAAGACAGTATCGGTGTCACCCAGGTCGAGAGCGTGTCCCGACTGC
CAGACAGTGGATGATGGAGCCAGGGTCTGTAAGAGCTGCTTCAGTCTAAGAATCGGAGAGCAATGTACC
TGGCTAAGTTCAAGGAATCATTTGGGGTGTCTTTCACCGAGCTGACGCGGGTGTTCAGGAGTGATAAGAC
GTGTTGCAACAGCTGGGTGATCTGTGTCCTCGCGGTGAACGAAGAATCTGTGGAGTCTAGTAAGACGCTC
CTCAAACCTTCATTGCGAGTTCTGTCAGATTCTCGTGCCGACACTCGGGCCAGTGGTTACCGCGCTGTATC
TCTGCGAGTTTAAATGTTCCAAAACCGCGAAACGGTGACAAAGTTGTTCTGCCAGCTCCTCAATGTTCA
AGAAATGCAACTGATGTGCAACCCTCCCAAGCATAAGAGCGTGGTCTGCGGTTGTTCTTTTTTAAGCAG
AGCATGAGTAGTATTAGTTTCAAGTTCGGCGGTTCCAGAGTGGCTCGCCAAACAGACCGTGGTGTCTCT
TCCAACAGGAGGCGAAACGTTCCAGCTGAGCAGAATGGTGCAGTGGCTTACGATCACAAATACGTGGA
AGAATCTGTATCGCGTACCCTACGCTGCATAGCCAACGAAGATCCAACGCCGACCGCTGGTCAAT
TGTAATAATCAGCTGAAGTATGTCCATGATTGTTCCAGAATGGTGGTACTACATAAGACAAGAAATGA
GAGAAATGACTATCTCAGAGTGGATATACAAATGCTGTGACAAAGTGAAGACACCGACCGCAGCAATGGAA
GGTGATAGCTAAACTCCTGCGGTACCAGGAGGTGAATATGGTGGCGTTCCTCTGCGCTCTGAGGCTTATG
TTCAAGAAAGTGCCAAAGAAGAATACCATAGTTTTGAGCGGTAACCTAATTCGGTAAAAGCTATTTTT
CATACAGTCTCATGAGTTTTCTGGAAGGAAAAGTCTGAGTGCATATGAACAGTAAGTCCCACTTTTGGCT
TCAACCCCTGACCGATTCAAAGTTCGGTCTCATCGATGACGCTACTGACGCATGCTGGCAGTTCATGGAT
GTTTATATGAGGAGTGCCTGGACGAAATGACATTTCTGTGATTGCAAGCACAAAGACGCTATGCAAG
TGAATTGCCAGTCTTTCATTACCACTAACGTGCCTGTGGACAAGAAATACAGTACAGTTACCTTCA
TTCAAGGCTCCAGGTGTTTTATTTCAACCGCGAGATGCCGTTGGACTCCGCCGTAATCCTGTTTACGAG
ATTAACGACAAGACCTGGGCATCATTTTTCATAAAGCTGGAAAAACAGCTGGATCTGACCCGGCCGGAGG
ACGGGAAACCCGACAGAGCCTTTCGCTGTAGCGCTGGCGAACCTGCTGGAATTATC

ACGCGTACGCGGCCGCTCGAGCAGAACTCATCTCAGAAGAGGATCTGGCAGCAAATGATATCCTGGATT
ACAAGGATGACGACGATAAGGTTTAA

Protein Sequence:

>VC101885 representing YP_004169293

Red=Cloning sites Green=Tags

MADKKGIKSSKLSNKCKEWFIIIEADCDDELTEMDKIFEESDGSIVSNLLDSDDEVQGNLELLNEQLLQ
ESNLQLADLKRKYL SPEKDSVLALSPQLESVSI SPHPKNSRRRLFDDSGIENEAE DSIGVTQVESVSPDC
QTVDDGARVCKELLQSKNRRAMYLAKFKESFGVSFTEL TRVFRSDKTCNSWVICVLAVNEELVSSKTL
LKLHCEFCQILVPTLGPVVTALYLCEFKCSKNRETVTKLFCQLLNQEMQLMCPNPKHKSVVVALFFFKQ
SMSSISFKFGAFPEWLAKQTVVSFQQEAE TFQLSRMVQWAYDHNHYVEESVIAHYHACIANEDSNAAA
AWLN CNQNLKYVHDCSRMVRYIRQEMREMTISEWIYKCCDKVKDT SDEWKVIAKLLRYQEVNMFVFLCALRLM
FKKVPKNTIVLSGKPNSSGKSYFSYLSMFLEKVVSHMNSKSHFWLQPLTDSKFGLIDDATDACWQFMD
VYMRSALDGNDISVDCKHKNAMQVKLPSLFITTNVPVDKEIQSYLSHRLQVYFYNREMP LDSAGNPVYE
INDKTWASFFIKLEKQLDLTRPEDGKPDRAFRCSAGEPAGII

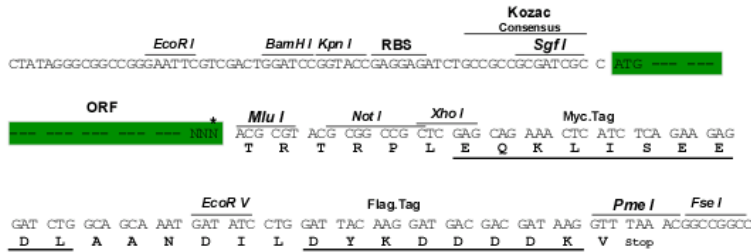
TRTRRLEQKLISEEDLAANDILDYKDDDDKV

Restriction Sites:

Sgfl-MluI

Cloning Scheme:

Cloning sites used for ORF Shuttling:



* The last codon before the Stop codon of the ORF

ACCN: NC_014956

ORF Size: 1806 bp

OTI Disclaimer: The molecular sequence of this clone can be viewed by clicking the "ORF Nucleotide Sequence" link above. This sequence represents the NCBI reference after codon optimization for human cell expression, and retaining the same decoded protein sequence. The stop codon in the native sequence was removed to create the in-frame c-terminal fusion with a Myc-DDK tag.

Components: The ORF clone is ion-exchange column purified and shipped in a 2D barcoded Matrix tube containing 10ug of transfection-ready, dried plasmid DNA (reconstitute with 100 ul of water).

Reconstitution Method:

1. Centrifuge at 5,000xg for 5min.
2. Carefully open the tube and add 100ul of sterile water to dissolve the DNA.
3. Close the tube and incubate for 10 minutes at room temperature.
4. Briefly vortex the tube and then do a quick spin (less than 5000xg) to concentrate the liquid at the bottom.
5. Store the suspended plasmid at -20°C. The DNA is stable for at least one year from date of shipping when stored at -20°C.

RefSeq: [NC_014956.1, YP_004169293](#)
RefSeq ORF: 1806 bp

Locus ID: 10146756

MW: 69.0 kDa