

Product datasheet for **VC101832**

E6 (NC_001576) Virus Tagged ORF Clone

Product data:

Product Type: Expression Plasmids
Product Name: E6 (NC_001576) Virus Tagged ORF Clone
Tag: Myc-DDK
Symbol: E6
Mammalian Cell Selection: Neomycin
Vector: pCMV6-Entry (PS100001)
E. coli Selection: Kanamycin (25 ug/mL)
ORF Nucleotide Sequence: >The Viral ORF clone VC101832 represents NCBI reference of NP_041741 with codon optimized for human cell expression
Red=Cloning site Blue=ORF Green=Tags(s)

GACGTTGTATACGACTCCTATAGGGCGGCCGGGAATTCGTCGACTGGATCCGGTACCGAGGAGATCTGCC
 GCCCGATCGCC

ATGTCTATGGGAGCACAGGAGCCTCGCAATATTCTTCTCCTCTGCAGAACTGTGGGATCCCCCTGGAGG
 ATCTGCGGCTCTGTTGCATCTTTGTACGAAGCAGCTCACCGCCGAGAGCTGGCAGCTTTCGACTCCG
 GGAACCTTACCTTGTCTGGCGCGGGGGTCCCATATGGAGCCTGTCAAGATGCTTGCCTGCAGGGA
 ATGTGAGGCGGTTGAAGTACTGGGACTATAGTTACTACGTGGAGGGAGTCAAGAAGAGACTAAGCAGT
 CAATCTATACACAGCTGATACGGTGTATATGTGTCACAAGCCATTGGTGAGGGAGGAGAAGGACCGCCA
 CCGAAACGAGAGACGCCCTGCACAAGATCTCCGGATATTGGAGGGGTAGCTGCCGAGTATTGCTGGAGC
 AGGTGCACAGTGAGAATACCCCAA

ACGCGTACGCGGCCGCTCGAGCAGAACTCATCTCAGAAGAGGATCTGGCAGCAATGATATCCTGGATT
 ACAAGGATGACGACGATAAGGTTTAA

Protein Sequence: >VC101832 representing NP_041741
Red=Cloning sites Green=Tags

MSMGAQEPRNILLLCRNCGIPLDLRLCCIFCTKQLTAAELAALRELVLVWRAGVPYGACARCLLLQG
 IVRRLKYWDYSYYVEGVEEETKQSIYTQLIRCYMCHKPLVREEKDRHRNERRRLHKISGYWRGSCYECWS
 RCTVRIPQ

TRTRRLEQKLISEEDLAANDILDYKDDDDKV

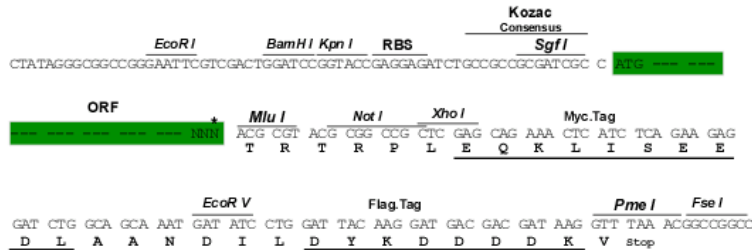
Restriction Sites: Sgfl-MluI



[View online »](#)

Cloning Scheme:

Cloning sites used for ORF Shuttling:



* The last codon before the Stop codon of the ORF

ACCN: NC_001576

ORF Size: 444 bp

OTI Disclaimer: The molecular sequence of this clone can be viewed by clicking the "ORF Nucleotide Sequence" link above. This sequence represents the NCBI reference after codon optimization for human cell expression, and retaining the same decoded protein sequence. The stop codon in the native sequence was removed to create the in-frame c-terminal fusion with a Myc-DDK tag.

Components: The ORF clone is ion-exchange column purified and shipped in a 2D barcoded Matrix tube containing 10ug of transfection-ready, dried plasmid DNA (reconstitute with 100 ul of water).

Reconstitution Method:

1. Centrifuge at 5,000xg for 5min.
2. Carefully open the tube and add 100ul of sterile water to dissolve the DNA.
3. Close the tube and incubate for 10 minutes at room temperature.
4. Briefly vortex the tube and then do a quick spin (less than 5000xg) to concentrate the liquid at the bottom.
5. Store the suspended plasmid at -20°C. The DNA is stable for at least one year from date of shipping when stored at -20°C.

RefSeq: [NC_001576.1](#), [NP_041741](#)
RefSeq ORF: 444 bp

Locus ID: 1489375

MW: 17.6 kDa