

Product datasheet for **VC101809**

L2 (NC_001357) Virus Tagged ORF Clone

Product data:

Product Type:	Expression Plasmids
Product Name:	L2 (NC_001357) Virus Tagged ORF Clone
Tag:	Myc-DDK
Symbol:	L2
Mammalian Cell Selection:	Neomycin
Vector:	pCMV6-Entry (PS100001)
E. coli Selection:	Kanamycin (25 ug/mL)



[View online »](#)

ORF Nucleotide Sequence:

>The Viral ORF clone VC101809 represents NCBI reference of NP_040316 with codon optimized for human cell expression
Red=Cloning site **Blue**=ORF **Green**=Tags(s)

GACGTTGTATACGACTCCTATAGGGCGGCCGGAATTCGTCGACTGGATCCGGTACCGAGGAGATCTGCC
 GCC**GCGATCGCC**

ATGGTTTTCTCATAGAGCCGCTCGGAGGAAGAGAGCGTCCGTGACAGATTTGTATAAGACCTGCAAGCAGA
 GCGGAACCTTGCCCTCCCGACGTCGTCCTAAGGTCGAGGGGACCACCCTGGCAGATAAGATCTTGACGTG
 GAGCTCCCTGGGGATCTTCTGGGAGGGCTCGGTATTGGGACCGGGAGTGGCACTGGAGGCAGAACAGGC
 TATATTCTCTGGGAGGAAGATCCAACACAGTGGTGGACGTCGGTCCAACCTAGACCCCCAGTGGTATCG
 AACCTGTTGGACCGACCGACCCATCCATCGTAACACTGATTGAGGACAGTTCGGTGGTCACTCTGGCGC
 TCCAAGGCCACCTTTACCGGTACCAGCGGATTCGATATTACAAGTGTGGCACCACGACCCCCGCCGTC
 CTCGATATCACACCCTTAGCACAAAGCGTAAGCATCTCCACAACCTAACTTTACTAACCCCGCATTTAGCG
 ATCCTAGCATCATTGAGGTTCCCGACCGGTTGAGGTTGCTGGCAACGTGTTCTGGGACACCCACCTC
 AGGAACCCACGGGTACGAAGAGATTCCACTCCAGACCTTTGCGAGTAGTGGGACAGGGGAAGAGCCAATC
 TCCAGTACCCCACTGCCGACGGTGGGAGGGTGGCAGGCCCGCGGCTGTACTCTAGGGCCTACCAGCAGG
 TAAGCGTAGCCAACCCAGAATTCCTTACAAGGCCCTCTCCCTGATCACATACGACAACCCAGCCTTCGA
 ACCTGTGGACACTACTTTGACCTTCGACCCAAGATCCGACGTGCCGACTCCGATTTTATGGATATCATC
 AGGTTGCATCGCCCTGCCTGACATCACGGCGGGGACCGTGAGATTTAGCCGGCTTGGCCAGCGGCCA
 CAATGTTTACCGATCCGGCACCCAGATTGGAGCACGGGTGCATTTCTACCACGACATCTCTCTATCGC
 ACCCAGCCCTGAGTACATTGAGCTGCAGCCGCTGGTGGGCTACCGAAGACAATGACTTGTGTTGACATC
 TACGCTGACGACATGGATCCGGCAGTTCCTGCTCCCTAGCCGACGACCCAGTCTTTGCGCTTTTTAAGT
 ATTCTCCAACCATAAAGTAGTGCCAGCAGCTATAGTAACGTGACTGTCCCGTTGACCAGCAGCTGGGACGT
 TCCCGTCTATACCGGCCCGACATTACACTGCCTTCCACCACGTCTGTATGGCCCATAGTTTCCCAACT
 GCCCAGCCTCCACACAGTACATTGGTATTACGGCACCCACTACTATCTCTGGCCGCTGTACTACTTCA
 TTCCCAAAAACGAAAGAGGGTGCCTTATTTCTTCGACAGCGGATTTGTGGCCGCT

ACGCGTACGCGGCCGCTCGAGCAGAAACTCATCTCAGAAGAGGATCTGGCAGCAATGATATCCTGGATT
 ACAAGGATGACGACGATAAGGTTTAA

Protein Sequence:

>VC101809 representing NP_040316
Red=Cloning sites **Green**=Tags

MVSHRAARRKRASVTDLYKTCQSGTCCPPDVVPKVEGTTLADKILQWSSLGIFLGGLGIGTSGTGGRTG
 YIPLGGRSNTVVDVGPTRPPVVIIEVPGTDPISIVTLIEDSSVVTSGAPRPTFTGTSGFDITSAGTTTAV
 LDITPSSTSVSISTTNFNPAFSDPSIIEVPQTGEVAGNVFVGTPTSGTHGYEEIPLQTFASSGTGEEPI
 SSTPLPTVRRVAGPRLYSRAYQQVSVANPEFLTRPSSLITYDNPAFEPVDTTLTFDPRSDVPDSDFMII
 RLHRPALTSRRGTVRF SRLQQRATMFTRSGTQIGARVHFYHDISPIAPSPEYIELQPLVSATEDNDFDI
 YADDMDPAVPVPSRSTTSFAFFKYSPITISSASSYSNVTVPLTSSWDVPVYTGPDITLPSSTSVWPIVSPT
 APASTQYIGIHGTHYYLWPLYFIPKRRKRVYPYFFADGFVAA

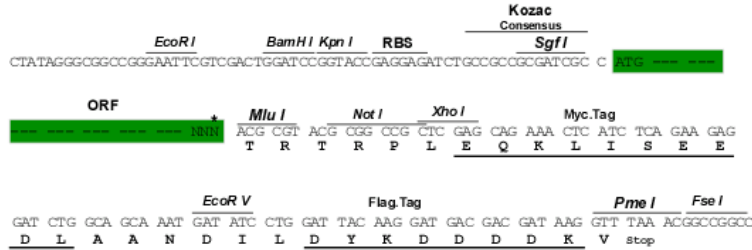
TRTRRLEQKLISEEDLAANDILDYKDDDDKV

Restriction Sites:

Sgfl-Mlul

Cloning Scheme:

Cloning sites used for ORF Shuttling:



* The last codon before the Stop codon of the ORF

ACCN: NC_001357

ORF Size: 1386 bp

OTI Disclaimer: The molecular sequence of this clone can be viewed by clicking the "ORF Nucleotide Sequence" link above. This sequence represents the NCBI reference after codon optimization for human cell expression, and retaining the same decoded protein sequence. The stop codon in the native sequence was removed to create the in-frame c-terminal fusion with a Myc-DDK tag.

Components: The ORF clone is ion-exchange column purified and shipped in a 2D barcoded Matrix tube containing 10ug of transfection-ready, dried plasmid DNA (reconstitute with 100 ul of water).

Reconstitution Method:

1. Centrifuge at 5,000xg for 5min.
2. Carefully open the tube and add 100ul of sterile water to dissolve the DNA.
3. Close the tube and incubate for 10 minutes at room temperature.
4. Briefly vortex the tube and then do a quick spin (less than 5000xg) to concentrate the liquid at the bottom.
5. Store the suspended plasmid at -20°C. The DNA is stable for at least one year from date of shipping when stored at -20°C.

RefSeq: [NC_001357.1](#), [NP_040316](#)
RefSeq ORF: 1386 bp

Locus ID: 1489091

UniProt ID: [P06463](#)
MW: 49.6 kDa