

Product datasheet for **VC101768**

regulatory protein E2 (NC_001356) Virus Tagged ORF Clone

Product data:

Product Type:	Expression Plasmids
Product Name:	regulatory protein E2 (NC_001356) Virus Tagged ORF Clone
Tag:	Myc-DDK
Symbol:	regulatory protein E2
Mammalian Cell Selection:	Neomycin
Vector:	pCMV6-Entry (PS100001)
E. coli Selection:	Kanamycin (25 ug/mL)
ORF Nucleotide Sequence:	>The Viral ORF clone VC101768 represents NCBI reference of NP_597740 with codon optimized for human cell expression Red=Cloning site Blue=ORF Green=Tags(s)

GACGTTGTATACGACTCCTATAGGGCGGCCGGAATTCGTCGACTGGATCCGGTACCGAGGAGATCTGCC
GCC**CGATCGCC**

ATGAATCTCTACGAACAAGACAGTAAACTGATTGAAGACCAGATCAAACAGTGAATCTGATTAGGCAGG
AGCAGGTCCTCTCCATTTCCGCCGGAAGAATGGCGTGATGCGAATCGGCCTTCAGGCCGTGCCATCTCT
GGCATCTCCCAGGAGAAAAGCCAAAAGCTGCTATTGAAATGGTCTGCACCTGGAGTCTTGAAGACTCT
CCATACGGGACCGAAGATTGGAGCTGCAGGACACTAGCCGGAACTTTTCTCGCACCTGCTGGCA
CTTTTAAAAAATCCGGCAGCACCTGGAGGTAACCTATGACAATAACCCAGATAACCAGACCCGGCATA
AATCTGGAATCACGTATACTACCAGAATGGCGATGATGTCTGGAGAAAAGTCTCCAGTGGCGTGGATGCC
GTGGCGTTTACTACTTGGAGCACGATGGCTACAAGAATTACTACGTCCTTTTCGCTGAAGAAGCCTCAA
AATACAGCACAACAGGTCAGTACGCTGTAATTACAGGGGAAAGCGCTTTACTAACGTTATGAGCAGCAC
ATCAAGCCCTCGCGCTGCTGGAGCACCCGCGTGCCTCCGATTACCCACTCTGAGCGAATCCGACACC
GCGCAACAGTCTACTAGTATCGACTACACGGAAGTCCAGGCCAGGGAGAAAAGTCTGAGTGGCCCAAC
GCCAGCAAAGACACCCGTGAGAAGACGCCCTTACGGTAGAAGAAGATCAAGATCTCCGCGGGTGGGG
GCGGAGAGAAGGCGAATCTACCCCAAGTGAAGTCTGGATCCGTGCCATCCGCCGCGATGTAGGGTCC
ATCCATACAACACCCAGAAAGGACACAGTTCAAGGCTCAGAAGGCTTCTGCAAGAAGCTTGGGATCCTC
CCGTTGTCTGCGTAAAAGGAGGGGCGAACCAACTGAAATGCCTCCGGTACAGATTGAAGGCTCTACACA
GGTGGATTTTCGACAGCATTTCTACAACCTGGCATTGGACTGATAGGAAAAACTGAACGGATCGGCAGC
GCAAGGATGCTCGTGAATTTATTGATGAGGCACAGCGGAGAAGTTCTCGAGAGAGTGGCTCTGCCCC
GCTCCGTTAGTGTGTTCTGGACAATTTAATGGAAGC

ACGCGTACGCGGCGCTCGAGCAGAAAAGTCTCAGAAAGAGGATCTGGCAGCAAATGATATCCTGGATT
ACAAGGATGACGACGATAAAGGTTTAA



[View online »](#)

Protein Sequence: >VC101768 representing NP_597740
 Red=Cloning sites Green=Tags

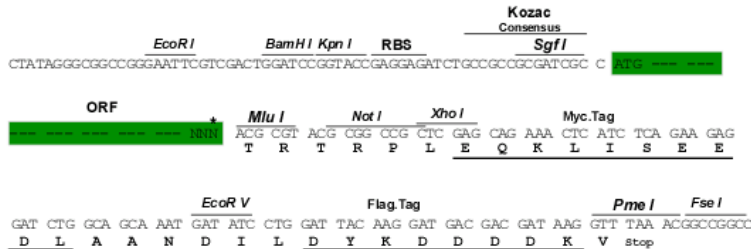
MNLYEQSKLIEDQIKQWNLIRQEQVLFHFARKNGVMRIGLQAVPSLASSQEKAKTAIEMVLHLESKDS
 PYGTEDWSLQDTSRELFAPPAGTFKKS GSTLEVTDNNPDNQTRHTIWNHVVYQNGDDVWRKVSSGVDA
 VGVYYLEHDGYKNYYVLF AEEASKYSTTGQYAVNYRGRKRF TNVMSSTSSPRAAGAPAVHSDYPTLSESDT
 AQQSTSIDYTELPGQGETSQVRQRQKTPVRRRPYGRRRSRSPRGGRRREGESTPSRTPGSVPSARDVGS
 IHTTPQKGHSSRLRRLLEAWDPPVVCVKGGANQLKCLRYRLKASTQVDFDISISTTWHWTDRKNTERIGS
 ARMLVKFIDEAQREKFLERVALPRSVSVFLGQFNGS

TRTRRLEQKLISEEDLAANDILDYKDDDDKV

Restriction Sites: SgfI-MluI

Cloning Scheme:

Cloning sites used for ORF Shutting:



* The last codon before the Stop codon of the ORF

ACCN: NC_001356

ORF Size: 1158 bp

OTI Disclaimer: The molecular sequence of this clone can be viewed by clicking the "ORF Nucleotide Sequence" link above. This sequence represents the NCBI reference after codon optimization for human cell expression, and retaining the same decoded protein sequence. The stop codon in the native sequence was removed to create the in-frame c-terminal fusion with a Myc-DDK tag.

Components: The ORF clone is ion-exchange column purified and shipped in a 2D barcoded Matrix tube containing 10ug of transfection-ready, dried plasmid DNA (reconstitute with 100 ul of water).

Reconstitution Method:

1. Centrifuge at 5,000xg for 5min.
2. Carefully open the tube and add 100ul of sterile water to dissolve the DNA.
3. Close the tube and incubate for 10 minutes at room temperature.
4. Briefly vortex the tube and then do a quick spin (less than 5000xg) to concentrate the liquid at the bottom.
5. Store the suspended plasmid at -20°C. The DNA is stable for at least one year from date of shipping when stored at -20°C.

RefSeq: [NC_001356.1](#), [NP_597740](#)

RefSeq ORF: 1158 bp

Locus ID: 1724532

MW: 43.7 kDa