

## Product datasheet for **VC101760**

### G (NC\_004148) Virus Tagged ORF Clone

#### Product data:

Product Type:	Expression Plasmids
Product Name:	G (NC_004148) Virus Tagged ORF Clone
Tag:	Myc-DDK
Symbol:	G Protein
Mammalian Cell Selection:	Neomycin
Vector:	pCMV6-Entry (PS100001)
E. coli Selection:	Kanamycin (25 ug/mL)
ORF Nucleotide Sequence:	>The Viral ORF clone VC101760 represents NCBI reference of YP_012612 with codon optimized for human cell expression Red=Cloning site Blue=ORF Green=Tags(s)

GACGTTGTATACGACTCCTATAGGGCGGCCGGAATTCGTCGACTGGATCCGGTACCGAGGAGATCTGCC  
GCC**CGATCGC**C

ATGGAAGTAAAGTCGAAAATATCAGGGCCATCGATATGCTCAAGGCCGCGTCAAAAATAGGGTCGCTC  
GATCCAAATGTTTTAAGAACGCTTCACTGATTCTGATCGGCATCACCCTCTGTCTATAGCCTTGAACAT  
CTACCTGATCATCAATTATACAATCCAGAAGACCTCATCAGAGAGTGAACACCACACCAGTAGTCCCTCCA  
ACAGAGTCCAATAAAGAAGCCTCAACGATTTCACTGATAATCCGGATATAAATCCAACTCCAGCAC  
CCACACAGCAGTCCACCGAGAACCCACACTGAATCCAGCCGCGTCTGTGTCCCCTAGCGAAACAGAACC  
CGCCAGCACTCCTGATACTACCAATAGGCTCAGCTCTGTGGACCGCAGCACCGCGCAGCCAAGTGAATCC  
AGAACTAAGACTAACTACAGTTCATACACGAAATAATCCAGCACCGCCAGTTCACACAGTCACTC  
CGCGCGCCACCACCAAGGCAATAAGAAGAGCTACAACGTTTAGAATGTCTCCACCGGCAAGAGACCCAC  
CACAACCTCCGTGCAGAGTGATAGTAGTACAACCAGCAAACCAGGAAACAGGATCAGCAAACCC  
CAGGCTCCGTTCCACAATGCAGAAC

**ACGCGT**ACGCGGCCGCTCGAGCAGAAACTCATCTCAGAAGAGGATCTGGCAGCAAATGATATCCTGGATT  
ACAAGGATGACGACGATAAGGTTTAA



[View online »](#)

**Protein Sequence:** >VC101760 representing YP\_012612  
 Red=Cloning sites Green=Tags

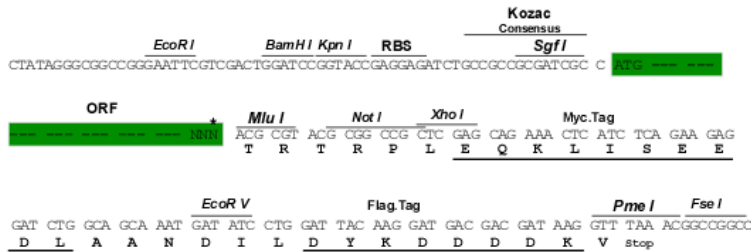
MEVKVENIRAIDMLKARVKNRVARSKCFKNASLILIGITTL SIALNIYLIINYTIQKTSSESEHHTSSPP  
 TESNKEASTISTDNPDI NPNSQHP TQQSTENPTLNPAASVSPSETEPASTPDTTNRLSSVDRSTAQPSES  
 RTKTKPTVHTRNNPSTASSTQSPPRATTKAIRRATTFRMSSTGKRPTTTSVQSDSSTTTQNHEETGSANP  
 QASVSTMQN

TRTRRLEQKLISEEDLAANDILDYKDDDDKV

**Restriction Sites:** SgfI-MluI

**Cloning Scheme:**

Cloning sites used for ORF Shuttling:



\* The last codon before the Stop codon of the ORF

**ACCN:** NC\_004148

**ORF Size:** 657 bp

**OTI Disclaimer:** The molecular sequence of this clone can be viewed by clicking the "ORF Nucleotide Sequence" link above. This sequence represents the NCBI reference after codon optimization for human cell expression, and retaining the same decoded protein sequence. The stop codon in the native sequence was removed to create the in-frame c-terminal fusion with a Myc-DDK tag.

**Components:** The ORF clone is ion-exchange column purified and shipped in a 2D barcoded Matrix tube containing 10ug of transfection-ready, dried plasmid DNA (reconstitute with 100 ul of water).

- Reconstitution Method:**
1. Centrifuge at 5,000xg for 5min.
  2. Carefully open the tube and add 100ul of sterile water to dissolve the DNA.
  3. Close the tube and incubate for 10 minutes at room temperature.
  4. Briefly vortex the tube and then do a quick spin (less than 5000xg) to concentrate the liquid at the bottom.
  5. Store the suspended plasmid at -20°C. The DNA is stable for at least one year from date of shipping when stored at -20°C.

RefSeq: NC\_004148.2, YP\_012612  
RefSeq ORF: 657 bp  
Locus ID: 2799942  
MW: 23.7 kDa