

## Product datasheet for **VC101730**

### Envelope transmembrane glycoprotein gp41 (NC\_001802) Virus Tagged ORF Clone

#### Product data:

Product Type:	Expression Plasmids
Product Name:	Envelope transmembrane glycoprotein gp41 (NC_001802) Virus Tagged ORF Clone
Tag:	Myc-DDK
Symbol:	Envelope transmembrane glycoprotein gp41
Mammalian Cell Selection:	Neomycin
Vector:	pCMV6-Entry (PS100001)
E. coli Selection:	Kanamycin (25 ug/mL)
ORF Nucleotide Sequence:	>The Viral ORF clone VC101730 represents NCBI reference of NP_579895 with codon optimized for human cell expression Red=Cloning site Blue=ORF Green=Tags(s)

GACGTTGTATACGACTCCTATAGGGCGGCCGGAATTCGTCGACTGGATCCGGTACCGAGGAGATCTGCC  
GCC**CGATCGCC**

ATGGCAGTCGGGATCGGCGCTCTGTTCTGGGTTTCTGGGCGCTGCAGGATCAACTATGGGAGCCGCAA  
GCATGACACTGACCGTGAAGCCAGACAGCTGCTTAGCGGGATTGTGCAGCAGCAGAATAACTTGTGAG  
GGCCATCGAAGCACAGCAACATCTGCTGCAGCTGACAGTTTGGGAATTAACAACCTTCAGGCACGGATC  
TTGGCAGTGGAGCGCTACCTGAAGGACCAGCAGCTGCTGGGCATTGGGGATGCTCCGGCAAGTTGATAT  
GCACTACTGCCGTCCTTGAACGCATCCTGGTCCAATAAATCACTCGAGCAGATATGGAATCATACAAC  
GTGGATGGAGTGGGACAGGAAATTAACAATTACACCTCCCTCATCCATTCTCTGATCGAAGAGAGTCAG  
AATCAACAGGAGAAGAACGAACAGGAACTGTTGGAAGTGGACAAATGGGCCAGCCTTTGGAAGTGGTTTA  
ACATCACGAACTGGCTCTGGTACATTAAGCTTTTCATCATGATCGTGGGAGGCCTGGTCGGCCTGCGGAT  
TGTGTTCCCGTGTCAATAGTTAATAGGGTAAGGCAAGGCTATTCTCCCTGTCTTCCAGACGCAT  
TTGCCTACACCTCGCGCCAGACCGCCCCGAGGGGATAGAAGAGGAGGGAGGAGAGGGACAGGGACA  
GAAGCATAAGACTTGTGAACGGCTCTCTCGCGCTGATCTGGGACGATCTGCGAAGCCTGTGCTTTCAG  
CTACCATCGGCTCAGAGATTTGTTGCTTATCGTCACGAGAATCGTGGAGCTGCTGGGAGACGCGGTTGG  
GAAGCCCTGAAATACTGGTGAACCTTCTGCAATATTGGTCTCAGGAGCTGAAGAATTCAGCCGTTAGCC  
TCTGAAATGCAACGGCCATCGCCGTCGCGGAAGGAACAGACAGGGTATCGAAGTTGTGCAAGGTGCATG  
CAGGGCAATCCGGCATATCCCCGGAGGATCCGCCAGGGGCTGGAAGAATCCTCCTT

**ACGCGT**ACGCGGCCGCTCGAGCAGAACTCATCTCAGAAGAGGATCTGGCAGCAAATGATATCCTGGATT  
ACAAGGATGACGACGATAAGGTTTAA



[View online »](#)

**Protein Sequence:** >VC101730 representing NP\_579895  
 Red=Cloning sites Green=Tags

MAVGIGALFLGFLGAAGSTMGAASMTLTVQARQLLSGIVQQNNLLRAIEAQQHLLQLTVWGIKQLQARI  
 LAVERYLKDQQLLGIWGCSGKLICTTAVPWNASWSNKSLEQIWNHTTWMEWDREINNYTSLIHSLEESQ  
 NQQEKNEQELLELDKWSLWNWFNITNLWYIKLFIIMIVGGLVGLRIVFAVLSIVNRVQGYSPFSQTH  
 LPTPRGPDPEGIEEEEGGERDRDRSIRLVNGLALIWDDLRSCLFSYHRLRDLILLIVTRIVELLGRRGW  
 EALKYWWNLLQYWSQELKNSAVSLLNATAIAVAEGTDRVIEVVQACRAIRHPRIRIQGLERILL

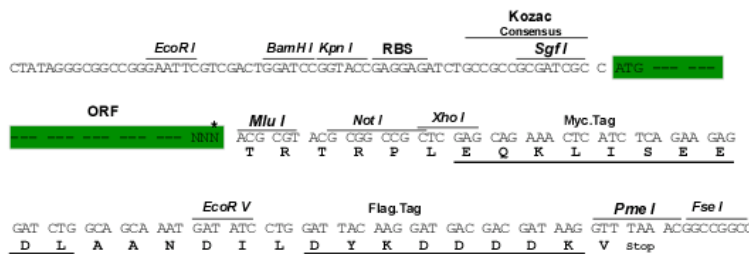
TRTRRLEQKLISEEDLAANDILDYKDDDDKV

**Chromatograms:** [https://cdn.origene.com/chromatograms/mk8100\\_b03.zip](https://cdn.origene.com/chromatograms/mk8100_b03.zip)

**Restriction Sites:** SgfI-MluI

**Cloning Scheme:**

Cloning sites used for ORF Shuttling:



\* The last codon before the Stop codon of the ORF

**ACCN:** NC\_001802

**ORF Size:** 1038 bp

**OTI Disclaimer:** The molecular sequence of this clone can be viewed by clicking the "ORF Nucleotide Sequence" link above. This sequence represents the NCBI reference after codon optimization for human cell expression, and retaining the same decoded protein sequence. The stop codon in the native sequence was removed to create the in-frame c-terminal fusion with a Myc-DDK tag.

**Components:** The ORF clone is ion-exchange column purified and shipped in a 2D barcoded Matrix tube containing 10ug of transfection-ready, dried plasmid DNA (reconstitute with 100 ul of water).

**Reconstitution Method:**

1. Centrifuge at 5,000xg for 5min.
2. Carefully open the tube and add 100ul of sterile water to dissolve the DNA.
3. Close the tube and incubate for 10 minutes at room temperature.
4. Briefly vortex the tube and then do a quick spin (less than 5000xg) to concentrate the liquid at the bottom.
5. Store the suspended plasmid at -20°C. The DNA is stable for at least one year from date of shipping when stored at -20°C.

**RefSeq:** [NC\\_001802.1](#), [NP\\_579895](#)

**RefSeq ORF:** 1038 bp

**UniProt ID:** [P04585](#)

**MW:** 39.7 kDa