

Product datasheet for **VC101669**

ORF36 (NC_009333) Virus Tagged ORF Clone

Product data:

Product Type:	Expression Plasmids
Product Name:	ORF36 (NC_009333) Virus Tagged ORF Clone
Tag:	Myc-DDK
Symbol:	ORF36
Mammalian Cell Selection:	Neomycin
Vector:	pCMV6-Entry (PS100001)
E. coli Selection:	Kanamycin (25 ug/mL)



[View online »](#)

ORF Nucleotide Sequence:

>The Viral ORF clone VC101669 represents NCBI reference of YP_001129389 with codon optimized for human cell expression
 Red=Cloning site Blue=ORF Green=Tags(s)

GACGTTGTATACGACTCCTATAGGGCGGCCGGGAATTCGTCGACTGGATCCGGTACCGAGGAGATCTGCC
 GCC**CGATCGCC**

ATGCGATGGAAAAGAAATGGAGAGAGGGCCCCCTGACCCCTCTGCGAAGATCACGGACCCAGTCCCTCCG
 GCGGCGCCTTACTATATGCCCACGGTGCACACTGAAGCTGCCAAAGGCAACACGGATCTCAGAGCGGCC
 ATGGGCATCTACTTGGCAGTTGAACCAGCACATCCAGGTGAGCAAGACAAAAAGGCTACCGCATACTG
 AAAGCTCCCCGAGAATGGGGCAATGTACTCATCAAGTCCCATTGGAGTAAGCGGCTCGGGCGGGGG
 CCTTCGGTATAATTGTTCTATATCCGAAGATCTGTGCGTCAAGCAGTTTGACTCACGACGGGAGTTTTT
 TTACGAAGCCATTGCTAACGACTTGATGCAAGCCACGCGCAACGCTATCCTATGCATCCGGAGGAAGT
 AGATTGCTGGGCTTTGTTACGCCCTGTATCCCTGCAGGTCCATTGTCTATCCCAGAATGAAGTGAATC
 TCCTGCAACTGGACTGGTCTCAGGTCAACCTGAGCGTCATGGCTGCCGAGTTCAGTGGGCTGATGGCGGC
 AGTCAGCTTCTGAACCGCTATTGTGGCATGGTGCAGTGTGACGTGTACCCGACAATATCCTGGCAACT
 GGGGATCTTACTCCAATGAACCCAGGCCGCTGGTGTGACTGACTTCGGGAGCGTCGCCCTTCACAGCG
 GCTCAAAATGGACCAACCTGGTGGTACTAGCAATCTGGGTTTTAAACAGCATTGTTACGACTTTAGGGT
 GCCTCCCAAGCTGATTTGCAAGCATCTTATAAGCCCTCATGCGTGTGTTCCAGTGCTATCTGAGTAGC
 CTCGGCAAAATGCATGCTCAGGTTCTGGATCAACCCTACCCCATCAGCCCAAATATGGGGCTGACTATTG
 ATATGAGCAGCTTGGGCTACACACTTCTCACTTGGCTGGAGTTGTACCTCGACCTGCCCTGAACAAATCC
 TTTGAAGTTCCTGGGATCCGCGACTCGGGACGGAAGCCTGAGCCCATGTATTATTTGGGCTTTATGATA
 CCTCGGTTGGTGATGACACAGATCCTGTGACCGTATGGACCATGACGCTGGATCTGGGTTGACTGCA
 CAGGGAAGGCACAGGCTATCCCCATGCGGCAAGAGCATCAGCTGGCCTTTCAGAAGCAGTGTACTCTGTA
 CAAGGCTAACAAAAGGCAGAATCTCTCGCAACTGCTCCGACAAGCTCAATTGTCTATGCTGAAGTCA
 CTGGTGGGAAGCTGCTTGAACGGGATTTCTCAACCATGGTGGCCACCCCCACACCCGGGGACTGGTCT
 TT

ACGCGTACGCGGCCGCTCGAGCAGAAACTCATCTCAGAAGAGGATCTGGCAGCAAATGATATCCTGGATT
 ACAAGGATGACGACGATAAGGTTTAA

Protein Sequence:

>VC101669 representing YP_001129389
 Red=Cloning sites Green=Tags

MRWKRMEERRPPLTPLRRSRTQSSGGGLTICPRCALKLPKATRISERPWASTWQLNQHIQVSKTKKATAYL
 KAPREWGQCTHQDPDWSKRLGRGAFGIIVIPISDLVVKQFDSRREFFYEAIANDLMQATRERYPMHSGGS
 RLLGFVQPCIPCRSIVYPRMKCNLLQLDWSQVNLVMAAEFTGLMAAVSFLNRYCGMVHCDVSPDNILAT
 GDLTPMNPGRLLVDFGVALHSGSKWTNLVVTSNLGFQKQHCYDFRVPPKLICKHLYKPCVLFQCYLSS
 LGKMQAVLDQPYIIPNMGLTIDMSSLGYTLLTCELELYLDLPLNNPLKFLGSATRDGRPEPMYYLGFMI
 PRVVMQILSAVWMTLDLGLDCTGKAQAIPMRQEHQLAFQKQCYLYKANQKAESLANCSDKLNCPMLKS
 LVRKLLERDFFNHGGHPHTRGLVF

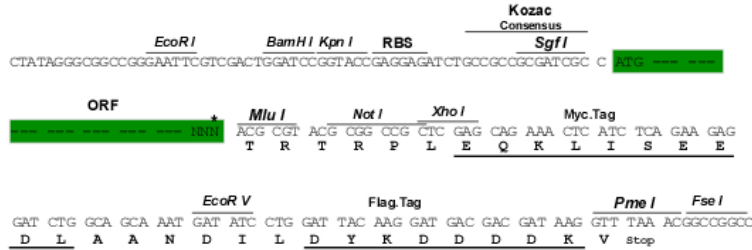
TRTRRLE**QKLISEEDLAANDILDYKDDDDK**V

Restriction Sites:

Sgfl-Mlul

Cloning Scheme:

Cloning sites used for ORF Shuttling:



* The last codon before the Stop codon of the ORF

ACCN: NC_009333

ORF Size: 1332 bp

OTI Disclaimer: The molecular sequence of this clone can be viewed by clicking the "ORF Nucleotide Sequence" link above. This sequence represents the NCBI reference after codon optimization for human cell expression, and retaining the same decoded protein sequence. The stop codon in the native sequence was removed to create the in-frame c-terminal fusion with a Myc-DDK tag.

Components: The ORF clone is ion-exchange column purified and shipped in a 2D barcoded Matrix tube containing 10ug of transfection-ready, dried plasmid DNA (reconstitute with 100 ul of water).

Reconstitution Method:

1. Centrifuge at 5,000xg for 5min.
2. Carefully open the tube and add 100ul of sterile water to dissolve the DNA.
3. Close the tube and incubate for 10 minutes at room temperature.
4. Briefly vortex the tube and then do a quick spin (less than 5000xg) to concentrate the liquid at the bottom.
5. Store the suspended plasmid at -20°C. The DNA is stable for at least one year from date of shipping when stored at -20°C.

RefSeq: [NC_009333.1](#), [YP_001129389](#)
RefSeq ORF: 1332 bp

Locus ID: 4961434

UniProt ID: [Q2HR82](#)
MW: 50.3 kDa