

Product datasheet for **VC101634**

ORF8 (NC_009333) Virus Tagged ORF Clone

Product data:

Product Type:	Expression Plasmids
Product Name:	ORF8 (NC_009333) Virus Tagged ORF Clone
Tag:	Myc-DDK
Symbol:	ORF8
Mammalian Cell Selection:	Neomycin
Vector:	pCMV6-Entry (PS100001)
E. coli Selection:	Kanamycin (25 ug/mL)



[View online »](#)

ORF Nucleotide Sequence:

>The Viral ORF clone VC101634 represents NCBI reference of YP_001129354 with codon optimized for human cell expression

Red=Cloning site Blue=ORF Green=Tags(s)

GACGTTGTATACGACTCCTATAGGGCGGCCGGGAATTCGTCGACTGGATCCGGTACCGAGGAGATCTGCC
GCC**CGGATCGCC**

ATGACACCCGAGAAGTCGACTGGCAACGTTGGGGACCGTTATTCTGCTGGTGTGCTTCTGCGCAGGTGCCG
CCCACAGTAGAGGTGATACGTTCCAAAACCTCCAGCAGCCCTACCCACCGGGATCCTCTTCAAAAAGCCCC
GACCAAACCTGGCGAGGAGGCCAGCGGGCCGAAAAGCGTTGATTTTTATCAGTTTAGGGTCTGCAGCGCA
TCAATCACAGGAGAGCTGTTTCAGGTTTAACTGGAACAGACTTGCCCGGACACTAAGGACAAGTACCATC
AAGAGGGGATCCTGCTTGTCTACAAGAAGAACATAGTTCCGCACATTTTCAAGGTCAGGAGATACCGAAA
GATTGCAACAAGCGTTACGGTTTACAGGGGCTCACTGAGTCTGCCATTACAAACAAATACGAACCTCCT
AGACCGGTCCCCCTTATGAAATCTCACACATGGACAGTACATACCAGTCTTTTCTAGCATGAAGGTGA
ACGTGAATGGGGTTGAAAATACGTTTACCGATCGCGATGATGTGAACACTACTGTGTTTCTGCGACCTGT
GGAGGGCCTGACAGATAATTCAGAGGTATTTAGTCAACCTGTAATCTATGCCGAGCCAGGCTGGTTT
CCAGGCATCTACCGGGTGCACACCCTCAACTGCGAGATAGTCGACATGATTGCCCGCTCCGCTGAAC
CATATAATTACTTCGTGACCTCACTCGGCGACACAGTGAAGTGTCTCCTTTCTGTTATAATGAGTCAAG
CTGCAGCACACGCCATCTAATAAGAAATGGCCTTTCAGTGCAGGTGGTTTTGAACCACACAGTGGTTACT
TACTCTGATAGGGGGACAAGTCTACTCCGAGAACAGGATCTTGTGAAAACCGGAGCATATACACTTA
GCTGGGCATCAGAGAGCAAGACAACCGCGGTGTGCCCTTGTCTCTGGAAGACCTTCCGCGATCCAT
CCAGACCACTCATGAAGACTCTTCCATTTTGTGGCAAACGAGATCACAGCTACATTACAGCTCCACTG
ACGCCCCGTGGCAAACCTTACAGACACATACTTGCCTCAGTCAGACATCAACACCACCTCAATGGCT
CCAAGGCCAAGCTGGCTTCCACCCACGTGCCAACGGCACAGTTCACTACTTTCACACAACCTGGGGCCT
GTATCTTGTGTTGGCAGCCATGTCTGCCATCAATCTCACCCATGCGCAAGGCGATAGTGGTAATCCAACA
TCTTCCCCACCGCCTCAGCTAGCCCTATGACCACTTCTGCCTCCCGCCGAAGAGAAGTCCGCGAGCA
CGGCCGACCGGTGGAGGCGGGAGTACTGATAACCTGCTACACCCAGCTGCAGTTTCGCTTACGATAA
GCTGAGAGATGGCATTAAATCAGGCTTGGAGGAGCTGAGTAGAGCGTGGTGTAGAGAGCAAGTCAAGAC
AATCTTATGTGGTACGAGCTGAGTAAAATTAACCCAACCAAGTGTGATGACGGCCATTTATGGGCGACCTG
TGTCAGCCAAGTTTGTGGGAGATGCTATAAGCGTACTGAGTGCATCAATGTTGACCAATCTCAGTGAA
TATCCATAAGTCATTGAGGACCAACAGCAAGGACGTGTGTACGCTAGGCCGTTGGTGACCTTCAAATTT
CTCAACAGCTCTAATTTGTTTACAGGGCAGCTGGGCGCTAGAAAATGAGATTATCCTGACCAACAATCAGG
TGGAGACTTGCAAGGATACATGCGAACATTACTTTATCACACGCAACGAGACCCTGGTCTATAAGGACTA
TGCATATCTGCGAACCACTCAATACTACCGATATCTCTACACTGAACACCTTTATAGCCCTGAATCTTTCA
TTCATACAGAACATCGATTTTAAAGGCTATTGAGCTGATTCAGTGTGAGAAAAGGCTCGCTTTCATCAG
TATTCGATCTCGAAACTATGTTTCGCGAGTATAATTACTACACACACCCGCTGGCCGACTGCGAGAAGA
CCTCGACAACACTATCGACATGAATAAGGAGAGATTTGTCCGGGACCTGAGCGAGATTGTGGCTGATCTG
GGGGCATCGGCAAGACAGTGGTAAACGTGGCCAGCTCCGTAGTGACACTGTGTGGCAGCCTGGTGACAG
GATTTATCAACTTTATCAAGCATCCTCTCGGCGGTATGCTGATGATAATTATTGTGATCGCGATAATCCT
GATTATCTTTATGTTGAGTAGGAGAACAACACCATAGCTCAGGCACCAAGTGAAGATGATATACCCGAC
GTGGACCGCCGAGCTCCCCATCCGCGCGCTCTACGCGCAAGAAAATCAAAAATATCCTCCTTGAA
TGCACCAGCTGCAGCAAGAAGAACGCCAGAAAGCAGATGATCTCAAGAAAAGCACCCGAGTGTGTTCCA
GCGAACCGCAAATGGTCTGAGACAGAGACTGCGCGGTTACAAACCCTCACGCAGAGTCTCGATATTAGC
CCAGAGACTGGAGAG

ACGCGTACGCGGCCGCTCGAGCAGAAACTCATCTCAGAAGAGGATCTGGCAGCAAATGATATCCTGGATT
ACAAGGATGACGACGATAAGGTTTAA

Protein Sequence: >VC101634 representing YP_001129354
Red=Cloning sites Green=Tags

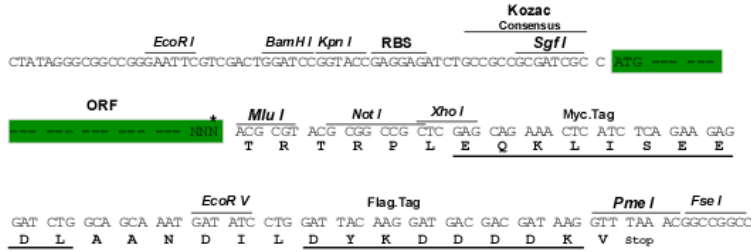
MTPRSRLATLGTVILLVCFCAGAAHSRGDTFQTSSSPTPPGSSSKAPTKPGEEASGPKSVDFYQFRVCSA
SITGELFRFNLEQTCPDTKDKYHQEGILLVYKKNIVPHIFKVRRYRKIATSVTVYRGLTESAITNKYELP
RPVPLYEISHMDSTYQCFSSMKVNVNGVENTFTDRDDVNTTVFLQPVEGLTDNIQRYSQPVIYAEPGWF
PGIYRVRTTVNCEIVDMIARSAEPYNYFVTSLGDTVEVSPFCYNESSCSTTPSNKNGLSVQVVLNHTVVT
YSDRGTSPTQNRIFVETGAYTLWASESKTTAVCPALWKTFFRSIQTTHEDSFHFVANEITATFTAPL
TPVANFTDYSCLTSDINTTLNASKAKLASTHVPNGTVQYFHTTGGLYLWQPMSAINLTHAQGDSGNPT
SSPPPSASPMTTSASRRKRRSASTAAAGGGGSTDNLSTYQLQFAYDKLRDGINQVLEELSRWCREQVRD
NLMWYELSKINPTSVMTAIYGRPVSAKFVGDAISVTECINVDQSSVNIHKSLRTNSKDV CYARPLVTFKF
LNSSNFTGQLGARNEIILTNNQVETCKDTCHEYFITRNETLVYKDYAYLRTINTTDISTLNTFIALNLS
FIQNIDFKAIELYSSAEKRLASSVFDLETMFREYNYTHRLAGLREDLNTIDMCKERFVRDLSEIVADL
GGIGKTVNVVASSVVTLGSLVTGFINFIKHPLGGMLMIIIVIAIILIIIFMLSRRTNTIAQAPVKMIYPD
VDRRAPPSGGAPTREEIKNILLGMHQLQEEERQKADDLKKSTPSVVFQRTANGLRQRLRGYKPLTQSLDIS
PETGE

TRTRRLEQKLI SEEDLAANDILDYKDDDDKV

Restriction Sites: Sgfl-MluI

Cloning Scheme:

Cloning sites used for ORF Shutting:



* The last codon before the Stop codon of the ORF

ACCN: NC_009333

ORF Size: 2535 bp

OTI Disclaimer: The molecular sequence of this clone can be viewed by clicking the "ORF Nucleotide Sequence" link above. This sequence represents the NCBI reference after codon optimization for human cell expression, and retaining the same decoded protein sequence. The stop codon in the native sequence was removed to create the in-frame c-terminal fusion with a Myc-DDK tag.

Components: The ORF clone is ion-exchange column purified and shipped in a 2D barcoded Matrix tube containing 10ug of transfection-ready, dried plasmid DNA (reconstitute with 100 ul of water).

Reconstitution Method:

1. Centrifuge at 5,000xg for 5min.
2. Carefully open the tube and add 100ul of sterile water to dissolve the DNA.
3. Close the tube and incubate for 10 minutes at room temperature.
4. Briefly vortex the tube and then do a quick spin (less than 5000xg) to concentrate the liquid at the bottom.
5. Store the suspended plasmid at -20°C. The DNA is stable for at least one year from date of shipping when stored at -20°C.

RefSeq: [NC_009333.1](#), [YP_001129354](#)

RefSeq ORF: 2535 bp

Locus ID: 4961501

UniProt ID: [Q2HR82](#)

MW: 94.0 kDa