

Product datasheet for **VC101623**

U86 (NC_001716) Virus Tagged ORF Clone

Product data:

Product Type:	Expression Plasmids
Product Name:	U86 (NC_001716) Virus Tagged ORF Clone
Tag:	Myc-DDK
Symbol:	U86
Mammalian Cell Selection:	Neomycin
Vector:	pCMV6-Entry (PS100001)
E. coli Selection:	Kanamycin (25 ug/mL)
ORF Nucleotide Sequence:	>The Viral ORF clone VC101623 represents NCBI reference of YP_073823 with codon optimized for human cell expression Red=Cloning site Blue=ORF Green=Tags(s)

GACGTTGTATACGACTCCTATAGGGCGGCCGGGAATTCGTCGACTGGATCCGGTACCGAGGAGATCTGCC
GCC**CGATCGCC**

ATGAGCACAACAGCCGACGTGGTACGGGAAGCAATGACTCTCTCTGGTCTCTACAATGAGATTCAGGACC
ACACTAAGCCTGAGAACGAAATTACGTACAGCAACTTTAACAACCAGGAAATAGTTACCAGCAAAACGTT
GCAAGACCCAGGCGCGGATACCGCTGAAAAGCCGGTCAACCTTTACATCCGAAAGTTCACCCAACAT
ACCGAACTGGCCAGTTCAGATTTGCTCCGAACTGCCTCATCAGGGACTCCAGAGTCTGTACTACAATT
ACCCTCAAGCATCTGGGAGAAGCTTCATTTCACTGCCTTATCAGCCCCAGAGCTCAGTTGATATTTTTAA
CAACTTGGACTATAAAAAATAGAGAGCTGTGCCACAACCTTTTCGATACTACATACCGCCAGCACCCTAC
CGCGGCCGCAATAACCGGGCAAGTACGATAGCCGGAATTATTGCAACCCCAACTCAAAATACCAGAACC
ACTACGGCAAGCATTTTTCACAGACCATAACAACGAAGGGCCGCGGGTATGCGAAGTTCACGATTTTCAG
CAACAGAAATGAGTTCACATTTCTGAGTATATGCAGCGGACCAGAGCTATGACAGCTACAATTCGAC
TTTAGACACAACCCATATAGGGACAATTACCAGCAACTCTGTCCCAACTACGGATTCCAGTCTAGGGACT
ACAGCATGGCTTTTTCTCAGATTCCTCCAGTTCAATGATCACAGACTCACAAAACCTGCAGAAAGAGTG
TATTTCTAGCGGGCTGACTGAGTAAAAAGTCCGAATACAGCCAAAATACTCCCATAACAGCAACCAT
AAAGAGACTAAACTTATATCTAATGTCAATAATCTCGAAAAACCAGCTAGGAAAAAACTGACAAAGACA
AGACCCCACAAAATGAAGATGTGGTGCTACTCTCATATATCCCCAGCAGTCATAAAATGGATCTGATCAA
AAGGATCTATAATGCTGACATTGTGCCTCTCGAAAGGACTCTCTGAGCTCAACCTCCGATGTGCGACAAG
TGTAAGTACAATAAAAGTTCTCAAGAGAAAACCTTTATGAAGGCGCGGACTCGCCCTCAACCTCTAAGG
AGAAGCAAATTACGTCCACAACAGATTCAAAACATTGTCCAATCTGGACAAAGGAAGTAGCAACCTGAA
GAAAAAGGATAAGTCACCTGACGAGGCCATTGAGAACCTAGAAAAGCTCTCCAAGCTTGAGCCCATGCTG
AGCCCTTTGCCACTTACACCCAAGCCAGACGCTCAAGAGAGTAACAGAGAGCCCCAACAAAGCTCATT
ACTTTAAGCGGCTGCTCGAGAAAAACGACAAGGACATATCTGCCAGGATATCGAGTTTATAAAACAGAG
CAGCCGGTGTACTGTGAGTACAGCACTCAACTGTAATTCTTCAACCGTGTTCGACACAAAGTGCACT
GGAAAGAAGCTTATCGCGTCGGCCGACCACGCAAGCAAGACTACCGTAAATTCTAAGATCGATGCTA



[View online »](#)

AAGATAACGATTTTGAGGGAAAGGTAACAGCCCCCTGCAACATCCCCTCAATCGACAATCTCCCGTGGA
GTCAGAGAAAAGTAATACGACAGATTCTATGTGCAACGATAATTTGACGCAAAGGACGCGGTGACACAGC
TCCTCCACTGAAGAGGGACAATAAAGAGCCCTGTGAATGATTACTCTCAGAGTGAGGTGGAGCATGTAC
ACAGCATCGAAAACCAGCATATGGAACAAATCATTTCCCAGACTACCGATGAAATTGCTCAAACTTCGT
CAGCCCAGAGCAGGAATTTTGGCCAAGTCAGACACTGAGAATGGCTGTTTCGAGTTTTTCGACAACGAG
GTACACGGAGCTCAAGTTCTGACAGCGATACCGACACCAGTTCAAGCTCTTCTCCAGCTCAAAATG
TTCCTGCAAACTAGTTCTCAGCAAGCTCCAAGAACTCCGTGCTTAGTAGGAACCTTGCTCCAGCACA
GAGCTGAAAACCTCATACACCGAATCTCCGAACTCCAATGGAAATAGGCAGTGCGATTTCTGTGCAAAA
TGGACATGTCTGAGTTTGAATTTAGGTGTGGGAAAGAGCTTAACTTGTACAAACACGTGGAGAGCCGGCT
GCAGCTTGATCAAAACAACGAACACCTGTACAATCCTCGATTTGCCCCACATCCGCAAGAAGAGGCCA
CCAAGCACCGAGAGCGAAAGCGACACCAATTCCGATCTCCAGAGCCAGAGTTTCTCATCCAGCAAAAAGC
GCCCCATGAACACAGGAATACAGAATCAGAGAGTTGTTCCGAGTCCACCAAGACAAGACACCGCCAAAA
GCATAGATCCAGAAGTAGTAGCGACACTCCAGGAGTGAAGCGCTTCAAAGTACGAACTGCAAAGTG
TGTAGTAATAACAAACAGGATAGCCAGTCCGAAACACAGTGAAGCATCTCATCTCCATATCAGCGACGA
ACTCAGAACATAGTATAAGTGAAAGCACGTACCACTTGTGAAGAACAAAACAGTGAAACACTCCGGTC
TCGGAGTAGGAGCTCCGAGTCTGATTGCAAGAAACGGTCTGAGCGGAGCTGTAGCAATCACTCTGGTCC
AGCGGCAGTACCCAGAAGTCAAACGGGTTGATATCGACTTCACCCATGGAGCCAAGTCCATTCCAAACG
AGTATGAGCAGAAAAAAGCACAAAAGTTTTTCAAAAATAAGAGAAGGAACGCTAGGAAGCGGTTCTC
TGATGATAGCGATTCTAGTATGCAATTGTTTTACAAGAAGCGGATTTCCGGCACACAGAAGAGTGATTCA
GAGCTGAGCGACAACGACCTGCCTATAGAGAATACGTCAAACGCAAGAACAGAAGCAGTCCGCCAAGT
TCAAGGTCCAGCGGGGGCGGTTCTACTAAGGACTTTGAGAACTGTTTCGAAAACCAATAAGGGCATT
CGAATACAAACAGATCCCAAAGAAGCCGTTCCCGAGGCCAAGCTGAAAGAGTCAGTGTATGCACGTGTC
TGCAATGGATCCTCTAAATCTGGCGCACTGATCATCTACTTCACGAGAAGCAAACTGTGGCTGAGGATA
TCAAGGCCATGCAGAAAGAGTTGATGGTCCGGCCAAATCACTATGTCTGAACCATTTAAGATGAACCA
CGCTCCACCTAGATATTACGATAAGGACAGTATAAAAAATTTTATTGAGCTTCAGAAGAAAGGACCTCAC
GAATTGTGGGAGAATATCTAACTCTGCTCATACCCTTACACCAGACATTCGACCTGAAAACAATAA
TAATCTACGCAGCCACTCCATTGACTTCTTTATGGCCGCAAAAATCTGCAATAACTACGCTAAAAAACG
CCCGAAGGAGATCGTGTGCGGCTGTCTAGCATTACCGACGGAGACAACCAATCTCTATCTATAACCCC
GTCAGCCCGGATTTCTCTCTAAATATACCGCACTTTGCAAGTTC

ACGCGTACGCGGCCGCTCGAGCAGAACTCATCTCAGAAGAGGATCTGGCAGCAAATGATATCCTGGATT
ACAAGGATGACGACGATAAGGTTTAA

Protein Sequence: >VC101623 representing YP_073823
 Red=Cloning sites Green=Tags

MSTTADVREAMTSLGLYNEIHDHTKPENEITYSNFNNQEIVTSKTLQDPRRAIPLKSRSTFTSESSPNT
 TETGQFRFASLPHQGLQSLYYNYPQASGENFISLPYQPQSSVDIFNNLDYKNRELCHNSFDTTYRQHYY
 RGRNNRGKYDSRNYCNPNSKYQNHYGKHFHRPYNRRGRGYAKFHDFSNRNEFTFPEYMQRDQSYDSYNSD
 FRHNYPYRDNYQQLCPNYGFQSRDYSMASFQIPSSSMITDSQNLQKECISGLTL SKKSEYSQNTPIQTNH
 KETKLI SNVNNLEK PARKKTDKDKTPQNE DVVLSYIPSSHKMDLIKRIYNADIVPLAKDSL SSTS DVDK
 CKYNKSSQEKTFMKARTRPSTSKKQITSTTDSKHCPNLDKGSSNLKKDKSPDEAIENLRKLSKLEPML
 SPLPLTPKPDVQESNQRAPTKLINFKRLEKNDKDISASDIEFIKQSSRCTVSTALNCNSSTVFSDTKCT
 GKNSYRVGRPRQAKTTVNSKIDAKDNDFEGKVTAPCNIPSIDNPPVESEKSNTTDSMCNDNLQTRRSDS
 SSTEEGQYKSPVNDYSQSEVEHVHSIENQHMEQIIISQTTDEIAQNFVSPEQEFLAKSDTENGLFEFFDNE
 LQCTQNSSETKKFPISDRSMSPKSTRSSSSSDSDTDTSSSSSSSSSKCCKSSSSASKNVLSRNSCSST
 ELKPSYTE SPNSNGNRQCDFVSKVDMSEFEFRCGKELNLYKHVESRLQLDQNEHLYNPRFRPHIRKKRP
 PSTESESDTNSDLQSQSFSSSKRRRHEHRNTESESCSESTKTRHRQKHSRSSSDTSR SR SASKSRTCKV
 CSNNKQDSQSETQCKHLISISRSNSEHSISESTYQSCKNKSETLRSRSRSESDCKKR SERSCSNHSWS
 SGSTQKSKRVDIDFTHGAKSIPNEYEQKSTNKFKNRRNRARKRFSDSDSSMQLFYKKRISGTQKSDS
 ELSDNDLSYREYVKLQEQKQSAKFKVQRGRVPTKDFEKLFRKTI RAFEYKQIPKPFPEAKLKESVYALC
 CNGSSKSGALIIYFTRSKTVAEDIKAMQKELMVRPNITMSEPFKMNHAPPRYYDKDSIKNFIELQKKGPH
 ELWENISNSAHTLYTRHSDLKTI I IYAATPIDFFMAAKICNNYAKKRPK EIVLRLSSITDGDNPIS IYNP
 VSRDFLSKYTALCKF

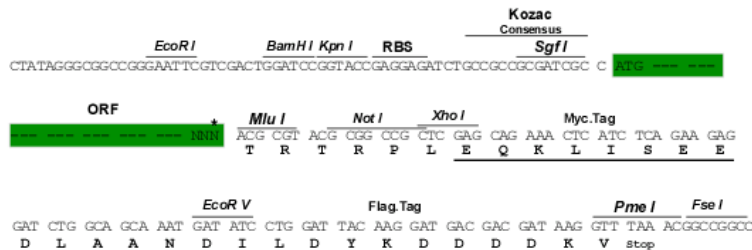
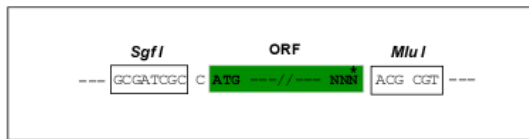
TRTRRLEQKLISEEDLAANDILDYKDDDDKV

Restriction Sites:

SgfI-MluI

Cloning Scheme:

Cloning sites used for ORF Shuttling:



* The last codon before the Stop codon of the ORF

ACCN: NC_001716

ORF Size: 3615 bp

OTI Disclaimer:	The molecular sequence of this clone can be viewed by clicking the "ORF Nucleotide Sequence" link above. This sequence represents the NCBI reference after codon optimization for human cell expression, and retaining the same decoded protein sequence. The stop codon in the native sequence was removed to create the in-frame c-terminal fusion with a Myc-DDK tag.
Components:	The ORF clone is ion-exchange column purified and shipped in a 2D barcoded Matrix tube containing 10ug of transfection-ready, dried plasmid DNA (reconstitute with 100 ul of water).
Reconstitution Method:	<ol style="list-style-type: none">1. Centrifuge at 5,000xg for 5min.2. Carefully open the tube and add 100ul of sterile water to dissolve the DNA.3. Close the tube and incubate for 10 minutes at room temperature.4. Briefly vortex the tube and then do a quick spin (less than 5000xg) to concentrate the liquid at the bottom.5. Store the suspended plasmid at -20°C. The DNA is stable for at least one year from date of shipping when stored at -20°C.
RefSeq:	NC_001716.2 , YP_073823
RefSeq ORF:	3615 bp
Locus ID:	3289541
MW:	138.1 kDa