

Product datasheet for **VC101529**

U94 (NC_000898) Virus Tagged ORF Clone

Product data:

Product Type:	Expression Plasmids
Product Name:	U94 (NC_000898) Virus Tagged ORF Clone
Tag:	Myc-DDK
Symbol:	U94
Mammalian Cell Selection:	Neomycin
Vector:	pCMV6-Entry (PS100001)
E. coli Selection:	Kanamycin (25 ug/mL)



[View online »](#)

ORF Nucleotide Sequence:

>The Viral ORF clone VC101529 represents NCBI reference of NP_050269 with codon optimized for human cell expression

Red=Cloning site Blue=ORF Green=Tags(s)

GACGTTGTATACGACTCCTATAGGGCGGCCGGAATTCGTCGACTGGATCCGGTACCGAGGAGATCTGCC
GCC**CGCATCGCC**

ATGTTCTCTATCATTAAATCCGTCGGATGACTTTTGGACCAAGGACAAGTACATTATGCTCACTATTAAAG
GTCCCGTTGAGTGGGAGGCCGAAATTCCTCGGCATCTCACTGATTTCTTCTGCAAGTTTAGTAACGTCCC
CGTTCCCCACTTTCGCGACATGCATTACCCGGTGCCCGAGACATCAAATGGATCACTGCTTGCACAAAG
ATGATAGATGTCATCCTCAATTACTGGAACAATAAAACCGCTGTCCCAACACCAGCCAAGTGGTACGCC
AGGCAGAAAATAAAGCCGGTCGCCCGAGTCTGACCCTCTGATCGCTTTGGACGGAATCCCACTGCGAC
TATAGGCAAACATACCACGAAATCAGGGGAGTGTCTCAAAGACTTCTCGACGGGAACGCCCTAAG
ATCGACGACTGGTGCACATATGTAAGACCAAAAAACGGGGTGGCACCCAGGTGTTACGCTCAGTT
ATATCCCTTTGCCCTGTCCAATAATTCGCCCGCAGTCCAGTGGCCTGGACTAACATTAACGAATT
GGGCGACGTCTGTGACGAAATTCACAGAAAACACATTATTTCTCACTTCAACAAGAAGCCTAATGTTAAG
CTTATGCTGTTCCCTAAGGACGGCACCAACCGGATTTCACTCAAAAGTAAGTTCTTGGGTACCATCGAGT
GGCTGTCAGACTTGGGCATCGTAACTGAGGACGCTTGGATACGGCGAGATGTGCGAAGCTATATGCAGCT
GCTCACACTTACCACGGGGATGTACTGATCCACCGAGCACTGAGCATCAGTAAAAACGAATACGAGCT
ACTCGAAGGCTATCGATTTTATGACACATTGACACCGACTTCGAGATATATGAGAACCAGTTTACC
AGCTGTTCTGCCTGCAGAGCTTCGACCCATCCTGGCCGGGACCATACTTACCAATGGCTCTCACCCG
GCGCGGAAAAAAACACCGTGAGCTTTATCGGTCCTCTGGTTGTGTAAGAGCATGCTGACTGGAGCT
ATCCTCGAGAACATCCCTCTCCACGGGATCTGCACGGTCCCTGAACACGAAGAATCTGCGCCTTATG
GTCAGGTCTCGTCTTGGTGGGAAGGACATTTCAATTAACCTCGAAAACCTTAAACATTATCAAAAACCT
GCTGGGCGGCCAGAAGATCATATTTCCGATCAATGAGAACGATCAGTACAAATCGGACCTGTCCAATA
ATCGCAACCTCTGCGTCGACATCAGGTCTATGGTTCAATCAATATCCATAAAATCAACCTCTCCAGA
GGGTATACAACCTCACCTTCGACAAGGTTATCCCTAGAAATTTCCAGTGATACAGAAAGACGATATCAA
CCAGTTCCTTTTTGGGCCAGGAATCGATCCATTAATTGTTTTATCGACTACACAGTACCAAAAATCCTG

ACGCGTACGCGGCCGCTCGAGCAGAACTCATCTCAGAAGAGGATCTGGCAGCAAATGATATCCTGGATT
ACAAGGATGACGACGATAAGGTTTAA

Protein Sequence:

>VC101529 representing NP_050269

Red=Cloning sites Green=Tags

MFSIINPSDDFWTKDKYIMLTIKGPVEWEAIEPGISTDFFCKFSNVPVPHFRDMHSPGAPDIKWITACTK
MIDVILNYWNNKTAVPTPAKWYAQAENKAGRPSLTLIALDGIPTATIGKHTTEIRGVLIKDFFDGNAPK
IDDWCTYAKTKKNGGGTQVFSLSYIPFALLQIIRPQFQAWTINELGDVCEIHRKHIIISHFNKKPNVK
LMLFPKDGTRNRSLSKFLGTIEWLSDLGIVTEDAWIRRDVRSYMLLTLTHGDVLIHRALSISKKRIRA
TRKAIDFIAHIDTDFEIIYENPVYQLFCLQSFDPILAGTILYQWLSHRRGKNTVFSFIGPPGCGKSMGTGA
ILENIPLHGILHGSLNKNLRLAYQVLLVWWDISINFENFNIKSLGGQKIIFFPINENHVIQIGPCPI
IATSCVDIRSMVHSNIHKINLSQRVYNFTFDKVI PRNFPVIQKDDINQFLFWARNRSINCFIDYTVPKIL

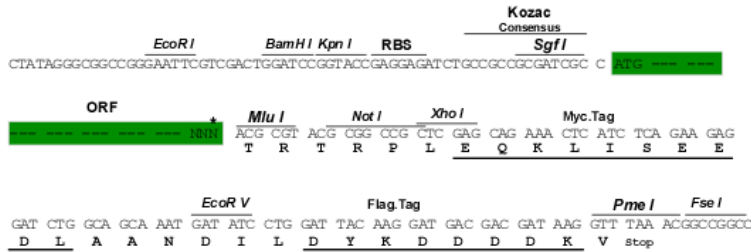
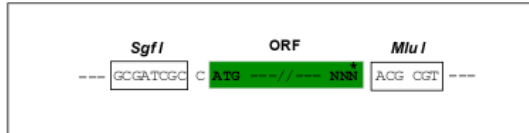
TRTRRLEQKLISEEDLAANDILDYKDDDDKV

Restriction Sites:

Sgfl-MluI

Cloning Scheme:

Cloning sites used for ORF Shuttling:



* The last codon before the Stop codon of the ORF

ACCN: NC_000898

ORF Size: 1470 bp

OTI Disclaimer: The molecular sequence of this clone can be viewed by clicking the "ORF Nucleotide Sequence" link above. This sequence represents the NCBI reference after codon optimization for human cell expression, and retaining the same decoded protein sequence. The stop codon in the native sequence was removed to create the in-frame c-terminal fusion with a Myc-DDK tag.

Components: The ORF clone is ion-exchange column purified and shipped in a 2D barcoded Matrix tube containing 10ug of transfection-ready, dried plasmid DNA (reconstitute with 100 ul of water).

- Reconstitution Method:**
1. Centrifuge at 5,000xg for 5min.
 2. Carefully open the tube and add 100ul of sterile water to dissolve the DNA.
 3. Close the tube and incubate for 10 minutes at room temperature.
 4. Briefly vortex the tube and then do a quick spin (less than 5000xg) to concentrate the liquid at the bottom.
 5. Store the suspended plasmid at -20°C. The DNA is stable for at least one year from date of shipping when stored at -20°C.

RefSeq: [NC_000898.1](#), [NP_050269](#)
RefSeq ORF: 1470 bp

Locus ID: 1497090

MW: 56.0 kDa