

Product datasheet for **VC101345**

US29 (NC_006273) Virus Tagged ORF Clone

Product data:

Product Type:	Expression Plasmids
Product Name:	US29 (NC_006273) Virus Tagged ORF Clone
Tag:	Myc-DDK
Symbol:	US29
Mammalian Cell Selection:	Neomycin
Vector:	pCMV6-Entry (PS100001)
E. coli Selection:	Kanamycin (25 ug/mL)



[View online »](#)

ORF Nucleotide Sequence:

>The Viral ORF clone VC101345 represents NCBI reference of YP_081613 with codon optimized for human cell expression

Red=Cloning site Blue=ORF Green=Tags(s)

GACGTTGTATACGACTCCTATAGGGCGGCCGGAATTCGTCGACTGGATCCGGTACCGAGGAGATCTGCC
GCC**CGGATCGCC**

ATGCGGTGCTTCCGGTGGTGGCTGTACAGCGGCTGGTGGTGGCTCACTTTTGGCTGTGCCGGACCGTGA
CCGTGGGTTTCGTCGCCCCACAGTCCGGGCCAAAGCACCGTCGTCAGAAGCGAGCCCGCACCCCCAAG
CGAGACCCGGCGGGACAACAACGACACCAGCTACTTCAGCAGCACCAGCTTCCATTCCAGCGTCAGCCCC
GCAACATCCGTCGACCGGCAATTCGGCGGACCACCTACGATCGGTGGGACGGCGGGCGGTGGTGAGAA
CTAGATACGGCAACGCCAGCGCATGCGTCACTGGGACCCAGTGGAGCACCAATTTTTTTTTTCAGCCAATG
CGAGCACTACCCAGCTTCGTGAAGCTGAATGGCGTCCAGCGGTGGACCCCGTGC GGCGGCCAATGGGG
GAGGTCGCTACTACGGCGGCTGTTGTATGGTGGCGGGGCAACCGGGCATAACGTCATCCTGGTGAGCG
GCTACGGCACCGCAGCTACGGCAACGCCCTGCGGGTCGACTTCGGACGGGGGAATTGCACCGCCCCAAA
GCGGACCTATCCCGGAGACTCGAGCTCCACGACGGCCGACCGACCCCGACCGGTGCGACCCCTACCAA
GTGTAATTCTACGGGCTGCAGTGCCCGAGCAGCTCGTGATCACCGCCACGGCGCGTGGGCATGCGGC
GGTGCCCTACTGGCTCCCGGCCACCCAGCAGACCCCATCGGCACGATCTGGAGAACGAGCTGCACGG
GCTGTGTGTGGACCTGCTCGTCTGCGTGTCTGCTCGCCCTGCTCCTCCTCGAGCTGGTGCCCATGGAA
GCCGTCCGGCACCCCTCCTGTTCTGGCGGGGGTGGCCCTGAGCCCTCCACCAGCAAGGTCGACCGGG
CCGTGAAGCTGTGCTGCGGGGATGCTGGGCTGCCCTCCCCCAGCGTCGCCCCCGGAGAGAA
GAAGGAGCTCCCGCTCAGGCCGCCCTGAGCCCCCTGACCACATGGTCCCTCCCCCTTCCCAAGC
ACCCGATTCCCGACAGCCCCCACCACCTATCAGCTCCGGCACGCCACCAGCCTGTCACCGTGCCAA
CCCTGCTGCTGTACACCAGCAGCGACATCGGCGACACTGCCAGCAAACACCTGCGTGGCCACGCCAC
CTATGGGAGCCTCCCGAGCCTGCCCGAGCACCGCAACTGTGCAGGAGTGCACCGTGTGACCGCACCC
AACTGCGGCATCGTCAATAATGACGGAGCAGTGAAGGAGGGCAGGATCACGGCGATGCCGTGACCCACA
GCCTGGATGTGGTCTCCCAATGTGCCGCCGATACAGGGTGGTCGACACTAGCGAG

ACGCGTACGCGGCCGCTCGAGCAGAACTCATCTCAGAAGAGGATCTGGCAGCAATGATATCCTGGATT
ACAAGGATGACGACGATAAGGTTTAA

Protein Sequence:

>VC101345 representing YP_081613

Red=Cloning sites Green=Tags

MRCFRWWLYSGWWLTFGCARTVTVGFVAPT VRAQSTVVRSEPPAPPSETRRDNDTSYFSSTSFHSSVSP
ATSVDQRFRRTTYDRWDGRRWLRTRYGNASACVTGTQWSTNFFFQCEHYPSFVKLNGVQRWTPVRRPMG
EVAYYGCCMVGGNRAYVILVSGYGTASYGNALRVDFGRGNCTAPKRTYPRRLELHDGRTDPSRCDPYQ
VYFYGLQCPQLVITAHGGVGMRRCP TGSRPTPSRPHRHLENELHGLCVDLLVCVLLLALLLLELVPM
AVRHPLLFWRRVALSPSTSKVDRAVKLCLRRMLGLPPPSVAPPGEKKELPAQAALSPPLTTWSLPPFPS
TRIPDSPPPPYQLRHATSLVTVPTLLLYTSSDIGDTASETTCAHATYGEPPPARSTATVQECTVLTAP
NCGIVNNDGAVSEGQDHGDAVHSLDVVSQCAADTGVDVDTSE

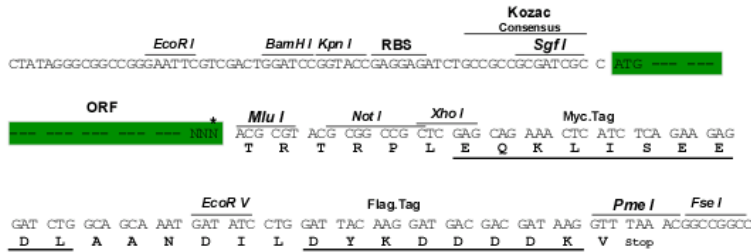
TRTRRLEQKLISEEDLAANDILDYKDDDDKV

Restriction Sites:

Sgfl-MluI

Cloning Scheme:

Cloning sites used for ORF Shuttling:


ACCN: NC_006273

ORF Size: 1386 bp

OTI Disclaimer: The molecular sequence of this clone can be viewed by clicking the "ORF Nucleotide Sequence" link above. This sequence represents the NCBI reference after codon optimization for human cell expression, and retaining the same decoded protein sequence. The stop codon in the native sequence was removed to create the in-frame c-terminal fusion with a Myc-DDK tag.

Components: The ORF clone is ion-exchange column purified and shipped in a 2D barcoded Matrix tube containing 10ug of transfection-ready, dried plasmid DNA (reconstitute with 100 ul of water).

Reconstitution Method:

1. Centrifuge at 5,000xg for 5min.
2. Carefully open the tube and add 100ul of sterile water to dissolve the DNA.
3. Close the tube and incubate for 10 minutes at room temperature.
4. Briefly vortex the tube and then do a quick spin (less than 5000xg) to concentrate the liquid at the bottom.
5. Store the suspended plasmid at -20°C. The DNA is stable for at least one year from date of shipping when stored at -20°C.

RefSeq: [NC_006273.2, YP_081613](#)
RefSeq ORF: 1386 bp

Locus ID: 3077483

MW: 51.0 kDa