

Product datasheet for **VC101334**

US17 (NC_006273) Virus Tagged ORF Clone

Product data:

Product Type:	Expression Plasmids
Product Name:	US17 (NC_006273) Virus Tagged ORF Clone
Tag:	Myc-DDK
Symbol:	US17
Mammalian Cell Selection:	Neomycin
Vector:	pCMV6-Entry (PS100001)
E. coli Selection:	Kanamycin (25 ug/mL)
ORF Nucleotide Sequence:	>The Viral ORF clone VC101334 represents NCBI reference of YP_081602 with codon optimized for human cell expression Red=Cloning site Blue=ORF Green=Tags(s)

GACGTTGTATACGACTCCTATAGGGCGGCCGGGAATTCGTCGACTGGATCCGGTACCGAGGAGATCTGCC
GCC**CGATCGCC**

ATGAGCCCCAACAGCGAGGCCACCGGCACCGCCTGGGCCCTCCACCCCCAGACCCAGCCGGGGCGTCA
TCATGATCTCCAGCGTCAGACCAACGACGTCCGGCGTTTCTGCTGTGTATGCGGGTGTACTCCACTGT
GGCCGTGCAGGGCACCTGTACCTTCTGCTCTGCCTCGGGCTCGTGTGGCCTTCCCCACCTCAAGGGC
ACAGTGTTCCTGTGCTGCACCGCTTCATGCCCCACTGAGCCTGATGGTGCCACCATCTGCCTGGCCC
TGCTGCACGGCAAGCGGGATGAGGGCAGCTTTACCAGCCCCCTCCCCGGCCTGCTCACCATCTACTC
CGTCTGACCACCCTGAGCGTGATCGTGCTAGCGCCTGTAGCAGCAGCACCCCTGGTGACCTTCAGCGGA
CTGCTCGCCTGCGTGCTGTTCTCCCTGTGCAGCTGCGTCACCGGGCTCGCCGGCCACAATCACCGGCGGT
GGCAGGTGATTGTGACCCTGTTCTGTCATCGGCGTGATCGCCTTCTGATTGCCCTGTACCTGCAGCCGT
GCCCTGGGCCACAAGCTGTTCTCGGCTACTACGCCATGGCCCTCTCCTCATGCTGGTGGTGACCGTG
TTTGACACCACCGGCTGTTGAGATCGCCTGGTCCGAGGCCGACCTGCTGACCCTGTGCCTGTACGAGA
ACCTGGTGTACCTGTACCTGCTCATTCTGATCCTGTTCACTACCGAGGACTCCCTGGACAAGCTGATCGC
ATGGATGACCTGGCTCAGCTCCCGGGCCACCGGCGCAACTAATGCCGCCTCCATCAGCGGCTGCGACCTC
CTGCGGGAGGTGCAGCGAATCTGACTCGACCATGGCC

ACGCGTACGCGGCCGCTCGAGCAGAAACTCATCTCAGAAGAGGATCTGGCAGCAAATGATATCCTGGATT
ACAAGGATGACGACGATAAGGTTTAA



[View online »](#)

Protein Sequence: >VC101334 representing YP_081602

Red=Cloning sites Green=Tags

MSPNSEATGTAWAPPPRPSRGVIMISSVSTNDVRRFLLCMRVYSTVAVQGTCTFLLCLGLVLAFLKKG
 TVFLCCTGFMPPLSLMVPTICLALLHGKRDEGSFTSPSPGLLTIYSVLTLSVIVASACSSSTLVTFSG
 LLACVLFSLCSCVTGLAGHNHRRWQVIVTLFVIGVIAFLIALYLQVPVPLGHKLFLGYAMALSFMLVVTV
 FDTTRLFEIAWSEADLLTLCLYENLVYL YLLILILFTTEDSLDKLIAWMTWLSRATGATNAASISGCDL
 LREVQRNLRTRMA

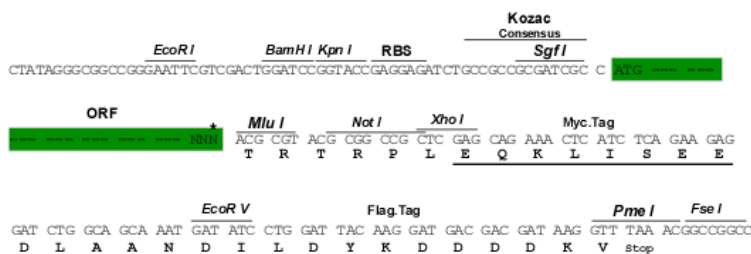
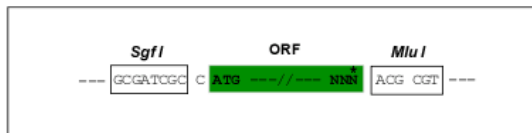
TRTRRLEQKLISEEDLAANDILDYKDDDDKV

Restriction Sites:

SgfI-MluI

Cloning Scheme:

Cloning sites used for ORF Shuttling:



* The last codon before the Stop codon of the ORF

ACCN: NC_006273

ORF Size: 879 bp

OTI Disclaimer: The molecular sequence of this clone can be viewed by clicking the "ORF Nucleotide Sequence" link above. This sequence represents the NCBI reference after codon optimization for human cell expression, and retaining the same decoded protein sequence. The stop codon in the native sequence was removed to create the in-frame c-terminal fusion with a Myc-DDK tag.

Components: The ORF clone is ion-exchange column purified and shipped in a 2D barcoded Matrix tube containing 10ug of transfection-ready, dried plasmid DNA (reconstitute with 100 ul of water).

Reconstitution Method:

1. Centrifuge at 5,000xg for 5min.
2. Carefully open the tube and add 100ul of sterile water to dissolve the DNA.
3. Close the tube and incubate for 10 minutes at room temperature.
4. Briefly vortex the tube and then do a quick spin (less than 5000xg) to concentrate the liquid at the bottom.
5. Store the suspended plasmid at -20°C. The DNA is stable for at least one year from date of shipping when stored at -20°C.

RefSeq: NC_006273.2, YP_081602
RefSeq ORF: 879 bp
Locus ID: 3077567
MW: 31.9 kDa