

## Product datasheet for **VC101233**

### UL44 (NC\_006273) Virus Tagged ORF Clone

#### Product data:

Product Type:	Expression Plasmids
Product Name:	UL44 (NC_006273) Virus Tagged ORF Clone
Tag:	Myc-DDK
Symbol:	UL44
Mammalian Cell Selection:	Neomycin
Vector:	pCMV6-Entry (PS100001)
E. coli Selection:	Kanamycin (25 ug/mL)



[View online »](#)

**ORF Nucleotide Sequence:**

>The Viral ORF clone VC101233 represents NCBI reference of YP\_081502 with codon optimized for human cell expression  
 Red=Cloning site Blue=ORF Green=Tags(s)

GACGTTGTATACGACTCCTATAGGGCGGCCGGAATTCGTCGACTGGATCCGGTACCGAGGAGATCTGCC  
 GCC**CGGATCGCC**

ATGGATAGGAAGACACGCCTGTCTGAACCCGCTACACTGGCTCTGAGGCTTAAGCCCTACAAAACCGCCA  
 TCCAACAGCTGAGAAGTGTTCATCAGAGCTCTGAAGGAAAACTACTGTGACATTCCTCCCTACACCTAG  
 CCTCATCCTTCAAACGTAAAGTACACTGCGTCTCAAAAATAACCTTCAATTCATCATGTCTTTACATT  
 ACAGATAAGTCATTCCAGCCTAAGACCATTAACAACCTCAACCCCTCTGTTGGGCAATTTTATGTATCTGA  
 CATCAAGCAAGGACCTGACCAAGTCTACGTGCAAGATATCAGCGACCTGTCCGCCAAGATTTCAATGTG  
 TGCACCTGATTTAACATGGAGTCTCTCAGCCTGCGTCCACGGGCAGGATATCGTAAGAGAAAGTGAG  
 AATAGTGCAGTGCACGTTGACCTGGATTTGGAGTGGTAGCCGACCTGCTCAAGTGGATCGGACCCACA  
 CGCGAGTCAAAGGAACGTGAAAAAGCCCTGCCCGACTGGAACCGTCCAGATCCTGGTCCACGCTGG  
 CCCACCTGCTATCAAGTTCATTCTGACAAACGGCAGCGACTCGAATTTACCGCCAACAACCGAGTGCA  
 TTCCATGGCGTGAAGAACATGAGGATCAATGTTCAAGTGAAGAATTCTATCAGACTCTGCTGAATTGCG  
 CCGTACCAAACCTCCCCTGTACTCTCCGCATTGTCACTGAGCATGATACACTTCTTTACGTGGCGAGCCG  
 CAATGGTCTGTTTCGAGTGGAGAATTTCTGACAGAGGAACCTTTACGCGCGGAGACCCCTTCGACAAG  
 AACTACGTCGGGAACAGTGGCAAGAGTCGGGGGGGAGGCGGTGGATCAGGATCTTTGAGCAGTCTGGCAA  
 ACGCTGGAGGGCTTCACGATGATGGACCCGGTCTTGACAATGATATAATGAATGAACCTATGGGTCTTGG  
 CGGTTTGGCGGGGAGGCGGGGGAGGAGGAAAGAAGCAGCAGCCGGGTGGTGGAGGAGGTAGTGGAACT  
 AGAAAAATGTCTCCGGGGCGGTGGGGGGATCACGATCACGGACTTTCCTCAAGGAAAAGTATGAGC  
 AGCACAATAATTACTCTTACCTGACCAGCAAGGAGGTTCCGGCGGGGGTGGGGGTGGTGGCGGGCGGGG  
 ATTGGACCGAATTCCGGAAATTTTCAATGACGCCAAGGAGGAATCCGACTCCGAGGACAGCGTTACT  
 TTTGAATTCGTGCCTAACACAAAAACAGAAGTGC

**ACGCGT**ACGCGGCCGCTCGAGCAGAACTCATCTCAGAAGAGGATCTGGCAGCAATGATATCCTGGATT  
 ACAAGGATGACGACGATAAGGTTTAA

**Protein Sequence:**

>VC101233 representing YP\_081502  
 Red=Cloning sites Green=Tags

MDRCTRLSEPPTLALRLKPYKTAIQQLRSVIRALKENTTVTFPLTPSLILQTVRSHCVSKITFNSSCLYI  
 TDKSFQPKTINNSTPLLGNFMYLTSSKDLTKFYVQDISDLSAKISMCAPDFNMEFSSACVHGQDIVRESE  
 NSAVHVDLDFGVVADLLKWIGPHTRVKNVKKAPCPTGTQVILVHAGPPAIKFILTNGSELEFTANNRVS  
 FHGVKNMRINVQLKNFYQTLNCAVTKLPCTLRIVTEHDTLLYVASRNGLFAVENFLTEEPFQRGDPFDK  
 NYVGNISGKSRGGGGSGSLSSLANAGGLHDDGPGLDNDIMNEPMGLGGLGGGGGGGKKHDRGGGGSGT  
 RKMSGGGGGDHGLSSKEKYEQHKITSYLSKGGSGGGGGGGGLDRNSGNYFNDAKEESDSEDSVT  
 FEFVPNTKKQKCG

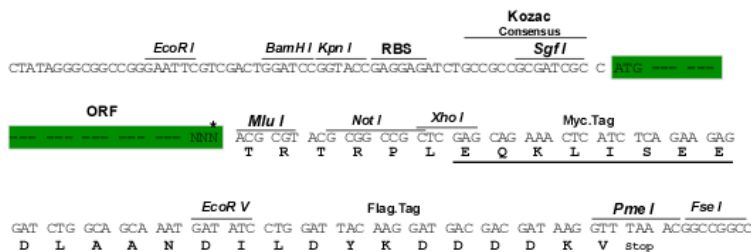
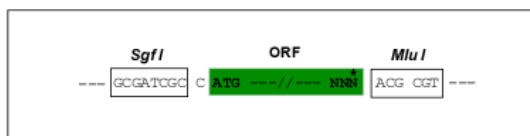
**TRTRRLEQKLISEEDLAANDILDYKDDDDKV**

**Restriction Sites:**

Sgfl-Mlul

**Cloning Scheme:**

Cloning sites used for ORF Shuttling:



\* The last codon before the Stop codon of the ORF

**ACCN:** NC\_006273

**ORF Size:** 1299 bp

**OTI Disclaimer:** The molecular sequence of this clone can be viewed by clicking the "ORF Nucleotide Sequence" link above. This sequence represents the NCBI reference after codon optimization for human cell expression, and retaining the same decoded protein sequence. The stop codon in the native sequence was removed to create the in-frame c-terminal fusion with a Myc-DDK tag.

**Components:** The ORF clone is ion-exchange column purified and shipped in a 2D barcoded Matrix tube containing 10ug of transfection-ready, dried plasmid DNA (reconstitute with 100 ul of water).

**Reconstitution Method:**

1. Centrifuge at 5,000xg for 5min.
2. Carefully open the tube and add 100ul of sterile water to dissolve the DNA.
3. Close the tube and incubate for 10 minutes at room temperature.
4. Briefly vortex the tube and then do a quick spin (less than 5000xg) to concentrate the liquid at the bottom.
5. Store the suspended plasmid at -20°C. The DNA is stable for at least one year from date of shipping when stored at -20°C.

**RefSeq:** [NC\\_006273.2](#), [YP\\_081502](#)
**RefSeq ORF:** 1299 bp

**Locus ID:** 3077460

**MW:** 46.3 kDa