

Product datasheet for **VC101227**

UL37 (NC_006273) Virus Tagged ORF Clone

Product data:

Product Type:	Expression Plasmids
Product Name:	UL37 (NC_006273) Virus Tagged ORF Clone
Tag:	Myc-DDK
Symbol:	UL37
Mammalian Cell Selection:	Neomycin
Vector:	pCMV6-Entry (PS100001)
E. coli Selection:	Kanamycin (25 ug/mL)



[View online »](#)

ORF Nucleotide Sequence:

>The Viral ORF clone VC101227 represents NCBI reference of YP_081496 with codon optimized for human cell expression
 Red=Cloning site Blue=ORF Green=Tags(s)

GACGTTGTATACGACTCCTATAGGGCGGCCGGGAATTCGTCGACTGGATCCGGTACCGAGGAGATCTGCC
 GCC**CGCATCGCC**

ATGTCCTCCCGTGTACGTGAACCTGTTGGGATCAGTGGGACTGCTGGCGTTTTGGTATTTCTTACC
 GGATCCAGAGGAAGAGGTTGGAAGACCCACTCCCACCGTGGCTGCGGAAAAAGAAAGCGTGTCTCAC
 CCGCCGCTCTCGGCATCGACTGCGGAGGCAACACGGCGTGATCGACGGCGAGAAGCTGAGACCGAAAGG
 TCCGTCGATCTCGTGGCCGCTTCTGGCCGAGGAGGTAAGAGTCTGTACGGAGGACACTGAGAGAG
 AGGATACAGAGGAGGAGCGAGAGGACGAGGAAGAAGAGAACGAGGCACGCACACCCGAGGTTAACCTAT
 GGACGCCGAAGGCCTTTCCAGACTCGCGCGGGAGGCTGCGAAGCGCTTAAGAAAGCCCTTCGCAGACAC
 CGGTTTTCTTGGCAGAGGCGCGCGGGCACGCCTGCTCCAGCACACGGACCCAGCAGTCCCACCAGC
 CAGCTGTGTTTTGCAGAGTCCATGGCCTTAGGGGCTTCCAAGTCTCCGTGTGGCTCTGCTGACACTTTT
 CTGGTCAACAGGGTACGGCGTGAGCGTCCGGTGTACCTATCACGGGACTGATATCAACGTACCAGCAAC
 GCAACTTCCATGAATTGTAGGCTCAACTGCACATGCAATCACACACAGATCTATAACGGACTTGCCTG
 GAGCTGAATCTAACTCCCTCTGAACGTGACATTCAGGCAAAGCAGGCGCCAGTGGCACTCCGTGATGCT
 GACCTTTGGTTTTCAATATCACCTCGAGGGTGGTTCCCTCTCCGCATCTTGAATGAAAGTAGGGATATT
 AATGTGACCGAGGTGTACGGAGAGGTTGCATGTTTCACTAATGACACTAATATCACGATGGGACAGCTCA
 CACTTAACCTCACTGGCAGGTCTTATGTGCTGCGGGCTTTGCCAGGACATCTCCATTTGAATCCTCCGT
 GAACTGGGAAGAAACAAATGTGACCGACAACCGCACCAGCTCTGAGAACAATACAGTACCAGTCAATGTC
 GTGCTGACTGTATACGCAGAGTCAGATTACATCTTTTTGCAGGACATGTGTCCACGCTTCTGAAAAGT
 CAGTCAAGCTGGCTAAAAACAACCGCCGAAACACCACTTTCACCGGCACTAATGTACAGACTTCCAGAG
 GTGGACCTTGACGAATGTGAGGATGGAATACTGGACAACCCCTGAGTATAATGTGGAAGAACAGGAGG
 TCAGCTCTGCTGAGAGCCAAGTCCAGAGCCCTCGGCCATTGGGCTTTGCTGTCCATTTGCACAGTCGCGG
 CCGGAAGCATCGCCCTGTTGAGCCTTTTCTGCATCCTCTGATCGGCCTCAGACGCGACCTCCTGAAGA
 TTTCCGGTACATTTGTAGAGACGAAGGTTCCAGTCCACTAAGAATGATGTTTCATTGGATCGTT

ACGCGTACGCGGCCGCTCGAGCAGAACTCATCTCAGAAGAGGATCTGGCAGCAAATGATATCCTGGATT
 ACAAGGATGACGACGATAAGGTTTAA

Protein Sequence:

>VC101227 representing YP_081496
 Red=Cloning sites Green=Tags

MSPVYVNLGSGVLLAFWYFSYRWIQRKLEDPLPPWLRKKKACALTRRSRHLRRQHGVIDGENSETER
 SVDLVAALLAEAGEESVTEDETEREEDTEEREDEEEENEARTPEVNPMDAEGLSGLAREACEALKALRRH
 RFLWQRRRRARLLQHNGPQQSHHAAVFCRVHGLRGFQVSVWLLLTLFWSTGYGVSVRCTYHGTDINVTSN
 ATSMNCRNLNCTCNHTQIYNGPCAGAESKPLNVTFRQSRQWHSVMLTFGFQYHLEGWFPLRILNESRDI
 NVTEVYGEVACFTNDNTITMGQLTLNLTGRSYVLRALARTSPFESSVNWEETNVTDNATSSENNVTVMSS
 VLTVYAESDYIFLQDMCPRFLKRSVKLAKNNRRNTFTGTNVTSLPEWTLQQCQGWKYWTLSIMWKNRR
 SALLRAKSRALGHWALLSICTVAAGSIALLSLFCILLIGLRDLLEDFRYICRDEGSSSTKNDVHWIV

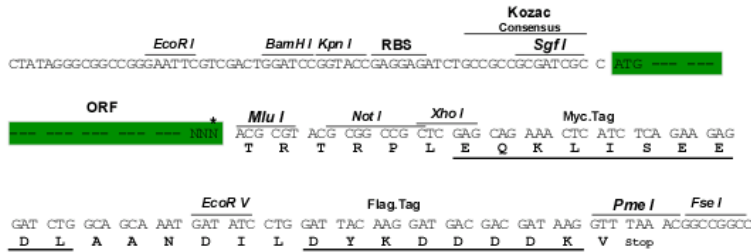
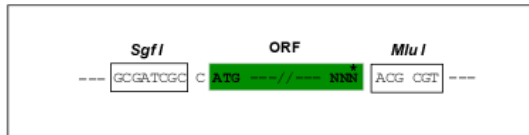
TRTRRLEQKLISEEDLAANDILDYKDDDDKV

Restriction Sites:

Sgfl-MluI

Cloning Scheme:

Cloning sites used for ORF Shuttling:



* The last codon before the Stop codon of the ORF

ACCN: NC_006273

ORF Size: 1464 bp

OTI Disclaimer: The molecular sequence of this clone can be viewed by clicking the "ORF Nucleotide Sequence" link above. This sequence represents the NCBI reference after codon optimization for human cell expression, and retaining the same decoded protein sequence. The stop codon in the native sequence was removed to create the in-frame c-terminal fusion with a Myc-DDK tag.

Components: The ORF clone is ion-exchange column purified and shipped in a 2D barcoded Matrix tube containing 10ug of transfection-ready, dried plasmid DNA (reconstitute with 100 ul of water).

Reconstitution Method:

1. Centrifuge at 5,000xg for 5min.
2. Carefully open the tube and add 100ul of sterile water to dissolve the DNA.
3. Close the tube and incubate for 10 minutes at room temperature.
4. Briefly vortex the tube and then do a quick spin (less than 5000xg) to concentrate the liquid at the bottom.
5. Store the suspended plasmid at -20°C. The DNA is stable for at least one year from date of shipping when stored at -20°C.

RefSeq: [NC_006273.2](#), [YP_081496](#)
RefSeq ORF: 1464 bp

Locus ID: 3077462

MW: 56.1 kDa