

## Product datasheet for **VC101215**

### UL24 (NC\_006273) Virus Tagged ORF Clone

#### Product data:

Product Type:	Expression Plasmids
Product Name:	UL24 (NC_006273) Virus Tagged ORF Clone
Tag:	Myc-DDK
Symbol:	UL24
Mammalian Cell Selection:	Neomycin
Vector:	pCMV6-Entry (PS100001)
E. coli Selection:	Kanamycin (25 ug/mL)
ORF Nucleotide Sequence:	>The Viral ORF clone VC101215 represents NCBI reference of YP_081483 with codon optimized for human cell expression Red=Cloning site Blue=ORF Green=Tags(s)

GACGTTGTATACGACTCCTATAGGGCGGCCGGAATTCGTCGACTGGATCCGGTACCGAGGAGATCTGCC  
GCC**CGATCGCC**

ATGAGTGATTTGGCATCCCTCGCCCTGACCGCAGAGTTCGGACTCGGCTGCCTCGAAGCGTATGTCAGGA  
TTAATGCAGGGCAGGTGCTCCAGTCGTGTGGCCCCCGGCTGGAACCTGGTTTTGCAGGAGATAGAGAC  
AGATGAGGATTTCAAGCCTGAGGACGTGAAAGCCTGGTCTCATTATCTGTGTTGTCAAACCCGCTGGCC  
TTCGTTGGAAGATTTGTGAACGAAGGTGTGCTGTCCCTGATCAGCAGAAAAGACAGCCGTGTGCTGA  
TCTCAGATGAGGGTACGTATTCTGCTACGTAAGGGAGGATACCGCAGTATACTATCTGGCCCGAACCT  
TATGGAGTTCGCACGGGTGGGACTCCGCGCCGTAGAGACGTTGCACTGTATGCGGTATCTGACAAGCAGC  
CTCGTGAAACGGTACTTCCGGCCTCTCCTTCGGGCTGGTCTTGGGACTCGACACTATGGCCAGATTTA  
TAATCCGACACCATGGCCAATTCATGCCTCTGACATATCCACCCGGAAGTGAAGTGAAGTGTGTAACCT  
CAGATGCTTTGAGAACAGCGTCGAGGGGGACACCTGCTTAGGAATATCAAACAGCCTTCGGCATGCGA  
GTGCTTGGCCTGGGCACAGTGAGCCTTAAGGGGAAAACGCCCATTCACACCTTCGATGGCCCGTGG  
ACCTGATACCTATTGTGGTAGCCTATACCGGTGCAGTGTATGCCTGCGATGTTAGGGATGACAGGTACAT  
TCGCGTGGGCGATAATCTGAATACATTTATGTGTTTGGGCTGAATCTGCTCTTCGAGAACCGCAGATTC  
TCAGGTACATAATGGAATCTACGACCGCGTCCCGACTGCCGAAAGGACGGCAACACCGC

**ACGCGT**ACGCGGCCGCTCGAGCAGAAACTCATCTCAGAAGAGGATCTGGCAGCAAATGATATCCTGGATT  
ACAAGGATGACGACGATAAGGTTTAA



[View online »](#)

**Protein Sequence:** >VC101215 representing YP\_081483  
 Red=Cloning sites Green=Tags

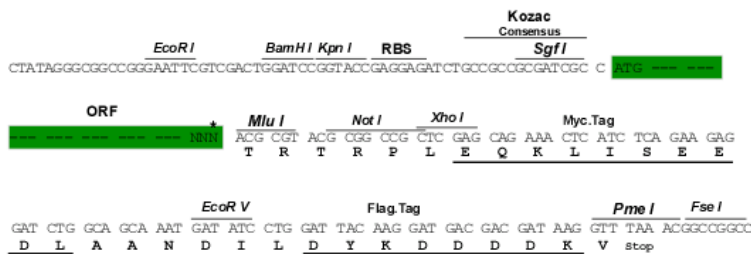
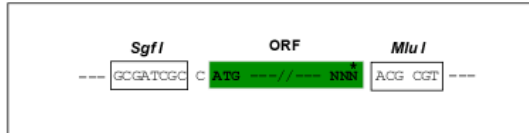
MSDLASLALTAIEFGLGCLAYVRINAGQVLPVVWPPGWNLVLEIETDEDFKPEDVKAWSHYLCCQTRLA  
 FVGRFVNEGVLPDQKKTAIVCLISDEGYVFCYVREDTAVYYLARNLMEFARVGLRAVETLHCMRYLTSS  
 LVKRYFRPLLRASLGLDTMARFIIRHHGQFMPLTYPPGTELRLCNLRCFENSVEGGHLLRNIKTAFGMR  
 VLGLGTVSLKGENAPFHLRWPVDLIPIVVAYTGAVYACDVRDDRYIRVGDNLNTFMCLGLNLLFENRRF  
 SGHNGIYDRVPDCPKGRQHR

TRTRRLEQKLISEEDLAANDILDYKDDDDKV

**Restriction Sites:** SgfI-MluI

**Cloning Scheme:**

Cloning sites used for ORF Shuttling:



\* The last codon before the Stop codon of the ORF

**ACCN:** NC\_006273

**ORF Size:** 900 bp

**OTI Disclaimer:** The molecular sequence of this clone can be viewed by clicking the "ORF Nucleotide Sequence" link above. This sequence represents the NCBI reference after codon optimization for human cell expression, and retaining the same decoded protein sequence. The stop codon in the native sequence was removed to create the in-frame c-terminal fusion with a Myc-DDK tag.

**Components:** The ORF clone is ion-exchange column purified and shipped in a 2D barcoded Matrix tube containing 10ug of transfection-ready, dried plasmid DNA (reconstitute with 100 ul of water).

- Reconstitution Method:**
1. Centrifuge at 5,000xg for 5min.
  2. Carefully open the tube and add 100ul of sterile water to dissolve the DNA.
  3. Close the tube and incubate for 10 minutes at room temperature.
  4. Briefly vortex the tube and then do a quick spin (less than 5000xg) to concentrate the liquid at the bottom.
  5. Store the suspended plasmid at -20°C. The DNA is stable for at least one year from date of shipping when stored at -20°C.

RefSeq: [NC\\_006273.2, YP\\_081483](#)  
RefSeq ORF: 900 bp  
Locus ID: 3077489  
MW: 34.2 kDa