

Product datasheet for **VC101149**

BGLF3 (NC_007605) Virus Tagged ORF Clone

Product data:

Product Type:	Expression Plasmids
Product Name:	BGLF3 (NC_007605) Virus Tagged ORF Clone
Tag:	Myc-DDK
Symbol:	BGLF3
Mammalian Cell Selection:	Neomycin
Vector:	pCMV6-Entry (PS100001)
E. coli Selection:	Kanamycin (25 ug/mL)
ORF Nucleotide Sequence:	>The Viral ORF clone VC101149 represents NCBI reference of YP_401689 with codon optimized for human cell expression Red=Cloning site Blue=ORF Green=Tags(s)

GACGTTGTATACGACTCCTATAGGGCGGCCGGGAATTCGTCGACTGGATCCGGTACCGAGGAGATCTGCC
GCC**CGATCGCC**

ATGTTCAACGCGGTGAAAGCGGATATGCCCGATGACCCAATGCTGGCACGGAGGTACGGCCAGTGCCTGG
AACTGGCCCTGGAGGCCCTGCCAAGACACGCCTGAACAGTTTAACTTGTAGAAACACCACTGAAAAGCTT
CCTGCTCGTGTCCAACATTCTCCACAAGATAACCGACCCTGGCATGAAGCTAGATCATCTGGTCGAGTC
GCTGAAGATGATTACGACTTTTCCAGTCTGGCACTGGAAGTCTGCCCCTTAATCCTCGCCTCCCGAAG
AATGGCAGTTTGGAGGTCAGGGCTGGTCAAGCAGGATGGAACCAAGCCAACCCGAAATGGGAATGGGCCT
TTGCTTTGAGGTGTTTGTGAGATCTCATGAGGATTGCCCTGGCCTGGAACAAGGACGAGGTTATTGGA
CAGGCATTGCAGATTCTGGCCACAGTCAGACATGGACTTCACTGGTGCCCGAGGACCCTCTTCTTGG
TGTGGGCTCTTCTACGGACCCCGGTCCCACTGCGAGGAGAGACACTGTGTCTATGCTGCTGCCCGGG
GAAAAGGGGGCAATCCTTCTCCCAACCGCGTATACACGCCCTGCGCGAACATCGAAGCTTCTCAGC
CACCTGACCCGATGTGTGTACGCCCTCTATCTGGATGTGCGGGACTGGAAGGTGAGGATATCGCCCCAC
CCTTCGACGTGTCTCGCCTGAACAAGATGGCCAAACAACCTGTCTTTTGGCCAGGAACCATTTTGTAT
TACTCGGGTCTGCCTTTTGTCTCCTGCACAAACAGAATCTGAATGCCAGTACAAACGGCCCGTAGAC
ACATATGATCCCTGCCTTATCCTTACTGGCGAAGCTGAAAGGTATATGGTGGATGCCGTCCGGAATTACA
GGGAAGCATCAACAGGAACACAGTTCTCTATCCGACATATGATCTGGGCTCTATCGTCGACAGATGTT
CACGTATGAGGACGAG

ACGCGTACGCGGCCGCTCGAGCAGAACTCATCTCAGAAGAGGATCTGGCAGCAAATGATATCCTGGATT
ACAAGGATGACGACGATAAGGTTTAA



[View online »](#)

Protein Sequence: >VC101149 representing YP_401689
Red=Cloning sites Green=Tags

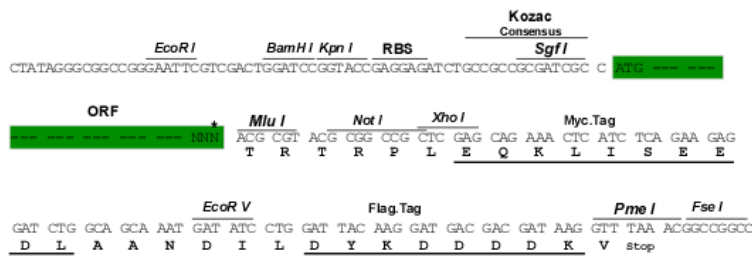
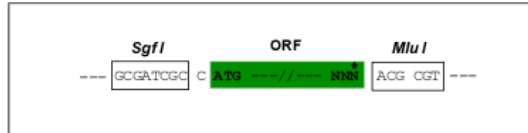
MFNAVKADMPDDPMLARRYGQCLELALAEACQDTPEQFKLVETPLKSFLLVSNILPQDNRPWHEARSSGRV
 AEDDYDFSSLALELLPLNPRLPEEWQFGGQGWSSRMPEPSQPEMGMGLCFEVFDGDLMRIALAWNKDEIVG
 QALQILAHSQWTSLVPEDPLPMMWALFYGPRSHCEERHCVYAAARGKRGPIILLPTAVYTPCANIEAFLA
 HLTRCVYALYLDVRDWKGEDIAAPPFDVSRNLNMAKQLCLLPQEPFCITRVCLLCLLHKQNLNAQYKRPVD
 TYDPCLILTGEAERYMVDVAGNYREASTGTTVLVPTYDLGSIVADMVTYEDE

TRTRRLEQKLISEEDLAANDILDYKDDDDKV

Restriction Sites: SgfI-MluI

Cloning Scheme:

Cloning sites used for ORF Shuttling:



* The last codon before the Stop codon of the ORF

ACCN: NC_007605

ORF Size: 996 bp

OTI Disclaimer: The molecular sequence of this clone can be viewed by clicking the "ORF Nucleotide Sequence" link above. This sequence represents the NCBI reference after codon optimization for human cell expression, and retaining the same decoded protein sequence. The stop codon in the native sequence was removed to create the in-frame c-terminal fusion with a Myc-DDK tag.

Components: The ORF clone is ion-exchange column purified and shipped in a 2D barcoded Matrix tube containing 10ug of transfection-ready, dried plasmid DNA (reconstitute with 100 ul of water).

- Reconstitution Method:**
1. Centrifuge at 5,000xg for 5min.
 2. Carefully open the tube and add 100ul of sterile water to dissolve the DNA.
 3. Close the tube and incubate for 10 minutes at room temperature.
 4. Briefly vortex the tube and then do a quick spin (less than 5000xg) to concentrate the liquid at the bottom.
 5. Store the suspended plasmid at -20°C. The DNA is stable for at least one year from date of shipping when stored at -20°C.

RefSeq: [NC_007605.1](#), [YP_401689](#)
RefSeq ORF: 996 bp
Locus ID: 3783703
UniProt ID: [P03211](#)
MW: 37.7 kDa