

Product datasheet for **VC101118**

BaRF1 (NC_007605) Virus Tagged ORF Clone

Product data:

Product Type:	Expression Plasmids
Product Name:	BaRF1 (NC_007605) Virus Tagged ORF Clone
Tag:	Myc-DDK
Symbol:	BaRF1
Mammalian Cell Selection:	Neomycin
Vector:	pCMV6-Entry (PS100001)
E. coli Selection:	Kanamycin (25 ug/mL)
ORF Nucleotide Sequence:	>The Viral ORF clone VC101118 represents NCBI reference of YP_401656 with codon optimized for human cell expression Red=Cloning site Blue=ORF Green=Tags(s)

GACGTTGTATACGACTCCTATAGGGCGGCCGGGAATTCGTCGACTGGATCCGGTACCGAGGAGATCTGCC
GCC**CGATCGCC**

ATGAGCAAACCTGCTGTATGTGCGCGACCATGAGGGCTTTGCATGCCTTACCGTGGAAACTCATCGCAATC
GCTGGTTCGCAGCTCACATTGTCCTTACTAAGGATTGCGGATGCCTGAACTTCTCAACGAAAGGGACCT
GGAGTTCTACAAGTTTTTGTTCACATTTCTGGCAATGGCGGAAAAATTGGTGAATTTAATATCGATGAA
CTCGTGACGTCCTTTGAGAGCCATGACATCGATCATTACTATACTGAACAGAAAGCTATGGAGAACGTCC
ACGGTGAGACATATGCTAACATCTTGAATATGTTGTTGATGGGGATAGAGCAGCGATGAATGCCTACGC
GGAGGCAATCATGGCCGACGAAGCACTCCAGGCTAAGATCAGCTGGCTGAGAGATAAGGTGGCCGCCGCT
GTTACACTTCCCAGAAAATACTGGTATTCTTGCTGATTGAGGGCATTTTTTTTATTAGCAGCTTTTACA
GCATAGCCTTGCTTCGGGTTTCGAGGACTCATGCCCGGATTTGCCTGGCCAATAATTACATTAGCCGCGA
TGAGTTGTTGCACACCAGGGCCGCCTCACTCCTGTACAACCTCAATGACTGCAAAAGCCGACAGGCCCTCGC
GCCACTTGGATCCAGGAGTTGTTTAGGACTGCTGTGGAGGTGGAGACGGCCTTTATCGAGGCTCGGGGG
AAGGCGTCACCTTGGTGGACGTCGAGCCATCAAACAGTTTCTCGAGGCCACCGTGACCCGATCCTGGG
AGATATTGGTCAAGCCCCACTGTATGGACCCCCCAAGGATTGCCCACTCACGTACATGACGAGC
ATCAAGCAGACAAACTTTTTCGAGCAGGAGTCTCAGACTATACAATGTTGGTTGTGACGATCTG

ACGCGTACGCGGCCGCTCGAGCAGAAACTCATCTCAGAAGAGGATCTGGCAGCAAATGATATCCTGGATT
ACAAGGATGACGACGATAAGGTTTAA



[View online »](#)

Protein Sequence: >VC101118 representing YP_401656
Red=Cloning sites Green=Tags

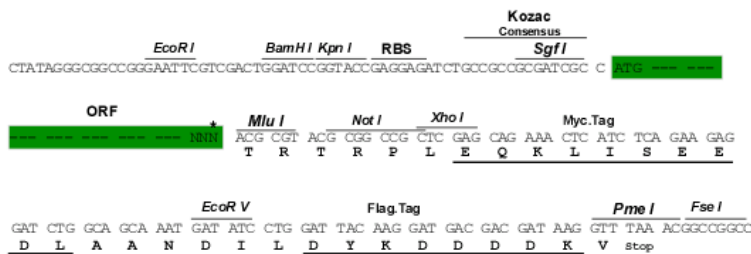
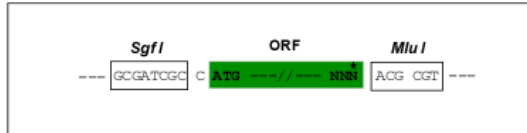
MSKLLYVRDHEGFACLTVETHRNRWFAAHIVLTKDCGCLKLLNERDLEFYKFLFTFLAMAIEKLVNFNIDE
 LVTSFESHDIHYEYEQKAMENVHGETYANILNMLFDGDRAAMNAYAEAIMADEALQAKISWLRDKVAAA
 VTLPEKILVFLLEIEGIFFISSFYSIALLRVRGLMPGICLANNYISRDELLHTRAASLLYNSMTAKADRPR
 ATWIQELFRTAVEVETAFIEARGEGVTLVDVRAIKQFLEATADRILGDIGQAPLYGTPPPKDCPLTYMYS
 IKQTNFFEQESSDYTMLVVDDL

TRTRRLEQKLISEEDLAANDILDYKDDDDKV

Restriction Sites: SgfI-MluI

Cloning Scheme:

Cloning sites used for ORF Shuttling:



* The last codon before the Stop codon of the ORF

ACCN: NC_007605

ORF Size: 906 bp

OTI Disclaimer: The molecular sequence of this clone can be viewed by clicking the "ORF Nucleotide Sequence" link above. This sequence represents the NCBI reference after codon optimization for human cell expression, and retaining the same decoded protein sequence. The stop codon in the native sequence was removed to create the in-frame c-terminal fusion with a Myc-DDK tag.

Components: The ORF clone is ion-exchange column purified and shipped in a 2D barcoded Matrix tube containing 10ug of transfection-ready, dried plasmid DNA (reconstitute with 100 ul of water).

- Reconstitution Method:**
1. Centrifuge at 5,000xg for 5min.
 2. Carefully open the tube and add 100ul of sterile water to dissolve the DNA.
 3. Close the tube and incubate for 10 minutes at room temperature.
 4. Briefly vortex the tube and then do a quick spin (less than 5000xg) to concentrate the liquid at the bottom.
 5. Store the suspended plasmid at -20°C. The DNA is stable for at least one year from date of shipping when stored at -20°C.

RefSeq: [NC_007605.1](#), [YP_401656](#)
RefSeq ORF: 906 bp
Locus ID: 3783683
UniProt ID: [P03211](#)
MW: 34.4 kDa