

## Product datasheet for **VC101096**

### BCRF1 (NC\_007605) Virus Tagged ORF Clone

#### Product data:

Product Type:	Expression Plasmids
Product Name:	BCRF1 (NC_007605) Virus Tagged ORF Clone
Tag:	Myc-DDK
Symbol:	BCRF1
Mammalian Cell Selection:	Neomycin
Vector:	pCMV6-Entry (PS100001)
E. coli Selection:	Kanamycin (25 ug/mL)
ORF Nucleotide Sequence:	>The Viral ORF clone VC101096 represents NCBI reference of YP_401634 with codon optimized for human cell expression Red=Cloning site Blue=ORF Green=Tags(s)

GACGTTGTATACGACTCCTATAGGGCGGCCGGAATTCGTCGACTGGATCCGGTACCGAGGAGATCTGCCGCC**CGATCGCC**

ATGGAAGGAGGCTGGTGGTGACCCTTCAATGTCTGGTCTGTACCTCGCCCCTGAATGTGGGGCA  
CAGATCAATGTGACAACCTTCCAGATGCTGCGGACCTCCGGGACGCTTTAGCAGAGTCAAGACATT  
TTCCAGACAAAGGACGAAGTGGACAACCTTTGCTGAAAGAATCCCTGCTCGAAGACTTAAGGGCTAT  
CTCGGCTGCCAGGCACTGAGTGAGATGATCCAATTCTATCTTGAAGAGGTGATGCCACAGGCCGAGAACC  
AAGATCCTGAGGCGAAGGATCATGTGAACCACTTGGGGAAAATTTGAAAACCTGCGCCTGCGCCTGAG  
GAGATGTCACCGGTTCCCTCCCTGTGAGAACAAGTCAAAAGCCGTGGAGCAAATCAAGAACGCCTTAAT  
AAGCTGCAGGAAAAGGCATCTACAAAGCAATGTCTGAGTTCGACATCTTCATTAATTACATAGAAGCGT  
ACATGACAATCAAGGCACGC

**ACGCGT**ACGCGGCCGCTCGAGCAGAAACTCATCTCAGAAGAGGATCTGGCAGCAAATGATATCCTGGATT  
ACAAGGATGACGACGATAAGGTTTAA

Protein Sequence: >VC101096 representing YP\_401634  
Red=Cloning sites Green=Tags

MERRLVVTLQCLVLLYLAPECGGTDQCDNFPQMLRDLRDAFSRVKTFQTKDEVDNLLLKESLLEDFKGY  
LGCQALSEMIQFYLEEVMPOAENQDPEAKDHVNSLGENLKTLLRLRRCHRFLPCENKSKAVEQIKNAFN  
KLQEKGIYKAMSEFDIFINYIEAYMTIKAR

**TR**TRRLEQKLISEEDLAANDILDYKDDDDKV

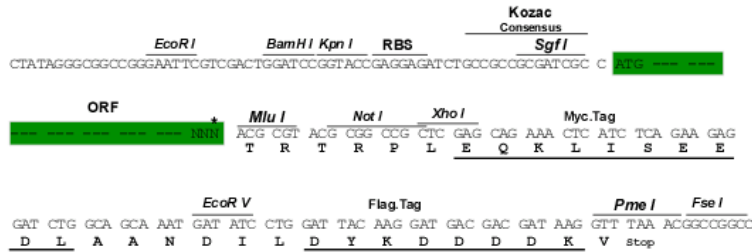
Restriction Sites: SgfI-MluI



[View online >](#)

**Cloning Scheme:**

Cloning sites used for ORF Shutting:



\* The last codon before the Stop codon of the ORF

**ACCN:** NC\_007605

**ORF Size:** 510 bp

**OTI Disclaimer:** The molecular sequence of this clone can be viewed by clicking the "ORF Nucleotide Sequence" link above. This sequence represents the NCBI reference after codon optimization for human cell expression, and retaining the same decoded protein sequence. The stop codon in the native sequence was removed to create the in-frame c-terminal fusion with a Myc-DDK tag.

**Components:** The ORF clone is ion-exchange column purified and shipped in a 2D barcoded Matrix tube containing 10ug of transfection-ready, dried plasmid DNA (reconstitute with 100 ul of water).

**Reconstitution Method:**

1. Centrifuge at 5,000xg for 5min.
2. Carefully open the tube and add 100ul of sterile water to dissolve the DNA.
3. Close the tube and incubate for 10 minutes at room temperature.
4. Briefly vortex the tube and then do a quick spin (less than 5000xg) to concentrate the liquid at the bottom.
5. Store the suspended plasmid at -20°C. The DNA is stable for at least one year from date of shipping when stored at -20°C.

**RefSeq:** [NC\\_007605.1, YP\\_401634](#)
**RefSeq ORF:** 510 bp

**Locus ID:** 3783689

**UniProt ID:** [P03211](#)
**MW:** 19.9 kDa