

Product datasheet for **VC101064**

BGLF3 (NC_009334) Virus Tagged ORF Clone

Product data:

Product Type:	Expression Plasmids
Product Name:	BGLF3 (NC_009334) Virus Tagged ORF Clone
Tag:	Myc-DDK
Symbol:	BGLF3
Mammalian Cell Selection:	Neomycin
Vector:	pCMV6-Entry (PS100001)
E. coli Selection:	Kanamycin (25 ug/mL)
ORF Nucleotide Sequence:	>The Viral ORF clone VC101064 represents NCBI reference of YP_001129484 with codon optimized for human cell expression Red=Cloning site Blue=ORF Green=Tags(s)

GACGTTGATACGACTCCTATAGGGCGGCCGGAATTCGTCGACTGGATCCGGTACCGAGGAGATCTGCC
GCC**CGATCGCC**

ATGTTCAACGCCGTCAAAGCAGACATGCCAGATGACCCGATGCTTGAAGGCGGTACGGTCAATGTCTGG
AGTTGGCTCTGGAGGCATGTCAGGACACACCTGAACAGTTAAGCTCGTGGAGACGCCCTGAAGTCCTT
TCTGCTGGTATCCAACATACTGCCACAGGATAACCGCCCTGGCAGCAAGCCCGCAGCTCCGGCCGCGTT
GCCGAAGACGACTATGATTTTCTCTCTGGCACTTGAATTGCTGCCACTGAATCCCGCCTGCCTGAGG
AATGGCAGTTTGGGGCCAGGGTTGGTCTAGTCGAATGGAACCATCCAGCCCGAGATGGGCATGGGTCT
TTGCTTTGAAGTTTTGATGGCGATTTGATGCGGATCGCCCTGGCGTGGAAACAAGGATGAAGTATCGGA
CAGGCGCTCCAGATTCTCGCGCACAGCCATACATGGACAAGCCTGGTACCTGAGGATCCTTTGCCTTGA
TGTGGCTCTGTTCTATGGCCCCAGATCCCATTGCGAAGAGCGCCATTGTGTCTATGCAGCAGCCAGAGG
CAAGCGAGGCCCATCCTGCTTCCAACAGCCGTCTATACCCCTGTGCTAACATAGAAGCTTTCTTGC
CACCTGACAAGATGCGTTTACGCACTCTATCTGGATGTGCGAGATTGGAAAGGGGAGGATATCGCCCCAC
CCTTTGATGTAGCCGCTGAATAAGATGGCTAACAGTTGTGCCTGCTCCACAGGAGCCCTTTTGCAT
CACTAGGGTGTGCTTCTGTCTGCTGCATAAGCAGAACCTTAATGCCAGTACAAGAGGCCAGTTGAC
ACATATGACCCCTGCTTATCCTCACCAGGAGGAGAGGATATGTTAGATGCTGTTGGAAACTATC
GCGAGGCAAGTACAGGGACCACAGTCTGTACCCTACATATGATCTCGGATCAATTGTCGCGGACATGGT
AACTTACGAAGACGAG

ACGCGTACGCGGCCGCTCGAGCAGAACTCATCTCAGAAGAGGATCTGGCAGCAAATGATATCCTGGATT
ACAAGGATGACGACGATAAGGTTTAA



[View online »](#)

Protein Sequence: >VC101064 representing YP_001129484
Red=Cloning sites Green=Tags

MFNAVKADMPDDPMLARRYGQCLELALAEACQDTPAQFKLVETPLKSFLLVSNILPQDNRPWHEARSSGRV
 AEDDYDFSSLALELLPLNPRLPEEWQFGGQGWSSRMEPSQPEMGMGLCFEVFDGDLMRIALAWNKDEVIG
 QALQILAHSHTWTS LVPEDPLPMMWALFYGPRSHCEERHCYVAAAARGKRGPIILLPTAVYTPCANIEAFLA
 HLTRCVYALYLDVRDWKGEDIAAPPFVSRNLNMAKQLCLLPQEPFCITRVCLLCLLHKQNLNAQYKRPVD
 TYDPCLILTGEAERYMVDVAVGNVREASTGTTVLVPTYDLGSIVADMVTYEDE

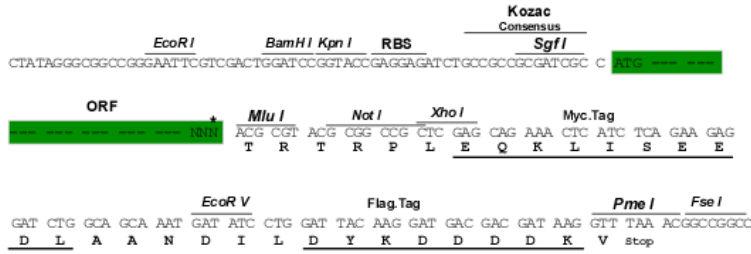
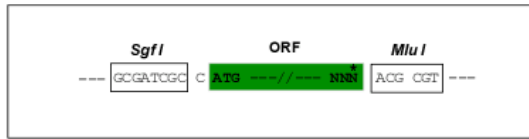
TRRRLEQKLISEEDLAANDILDYKDDDDKV

Chromatograms: https://cdn.origene.com/chromatograms/ja1939_h07.zip

Restriction Sites: Sgfl-MluI

Cloning Scheme:

Cloning sites used for ORF Shuttling:



* The last codon before the Stop codon of the ORF

ACCN: NC_009334

ORF Size: 996 bp

OTI Disclaimer: Due to the inherent nature of this plasmid, standard methods to replicate additional amounts of DNA in E. coli are highly likely to result in mutations and/or rearrangements. Therefore, OriGene does not guarantee the capability to replicate this plasmid DNA. Additional amounts of DNA can be purchased from OriGene with batch-specific, full-sequence verification at a reduced cost. Please contact our customer care team at custsupport@origene.com or by calling 301.340.3188 option 3 for pricing and delivery.

The molecular sequence of this clone can be viewed by clicking the "ORF Nucleotide Sequence" link above. This sequence represents the NCBI reference after codon optimization for human cell expression, and retaining the same decoded protein sequence. The stop codon in the native sequence was removed to create the in-frame c-terminal fusion with a Myc-DDK tag.

Components:	The ORF clone is ion-exchange column purified and shipped in a 2D barcoded Matrix tube containing 10ug of transfection-ready, dried plasmid DNA (reconstitute with 100 ul of water).
Reconstitution Method:	<ol style="list-style-type: none">1. Centrifuge at 5,000xg for 5min.2. Carefully open the tube and add 100ul of sterile water to dissolve the DNA.3. Close the tube and incubate for 10 minutes at room temperature.4. Briefly vortex the tube and then do a quick spin (less than 5000xg) to concentrate the liquid at the bottom.5. Store the suspended plasmid at -20°C. The DNA is stable for at least one year from date of shipping when stored at -20°C.
Note:	Plasmids are not sterile. For experiments where strict sterility is required, filtration with 0.22um filter is required.
RefSeq:	NC_009334.1 , YP_001129484
RefSeq ORF:	996 bp
Locus ID:	5176188
MW:	37.7 kDa