

Product datasheet for **VC101044**

BRLF1 (NC_009334) Virus Tagged ORF Clone

Product data:

Product Type:	Expression Plasmids
Product Name:	BRLF1 (NC_009334) Virus Tagged ORF Clone
Tag:	Myc-DDK
Symbol:	BRLF1
Mammalian Cell Selection:	Neomycin
Vector:	pCMV6-Entry (PS100001)
E. coli Selection:	Kanamycin (25 ug/mL)



[View online »](#)

ORF Nucleotide Sequence:

>The Viral ORF clone VC101044 represents NCBI reference of YP_001129468 with codon optimized for human cell expression

Red=Cloning site Blue=ORF Green=Tags(s)

GACGTTGTATACGACTCCTATAGGGCGGCCGGAATTCGTCGACTGGATCCGGTACCGAGGAGATCTGCC
GCC**CGCATCGCC**

ATGAGACCCAAGAAGGACGGTCTGGAGGATTTTTGAGGTTGACTCCAGAAATTAAGAAGCAGCTCGGTA
GCCTGGTAAGTGATTATTGCAACGTGCTCAACAAAGAATTCACCGCGGGTCAAGTCAAAATTACATTGCG
CTCCTACAAAATCTGCAAGGCCTTCATTAATGAAGCGAAGGCTCATGGTCGCAATGGGAGGCCTCATG
GCTACACTGAACATATGCAATTTCTGGGCTATTCTGAGAAATAATCGCGTTCGCAGACGCGCCGAGAACG
CTGGGAACGACGCTGTAGTATCGCTTGTCCCATCGTGATGCGGTATGTGCTCGACCACCTGATTGTGGT
CACCGATAGGTTCTTCATCCAGGCCCTAGTAATCGCGTATGATTCTGCAACAATCGGAACAGCTATG
TACAAATTGCTTAAACACAGTCGCGTGAGGGCATATACATATAGTAAAGTCTGGGCGTGGATCGGGCGG
CCATTATGGCAAGCGGTAAAGCAAGTAGTGAACACCTGAACCGCATGGAGAAAGAGGGCCTCCTGTCTTC
CAAATTCAAAGCGTTTTGTAAATGGGTCTTCACTTATCCAGTGTGGAGGAAATGTTTCAAACCATGGTA
TCATCTAAAACAGGCCACCTCACTGACGACGCTAAAGACGTGAGAGCTCTCATAAAACCTGCCCGCG
CATCATACAGCTCCCACGAGGCCAGAGGAGCTATGTTTCTGGGTTCTGCCAGCATGCCTGCTGAGCAC
TAAAAGCAAGGCTGTAGAGACGCTATTCTTGTGACGCGCGCAGACCGAATGGATGAAGAAGTATGGGC
AATGATGGTGGAGCATCTCACACCGAGGCCCGGTATTGAGAAATCCGGTCAAGTCCACGCTTTCACCGATG
AGTTGGAAAGTCTGCCATCCCCACCATGCCGTTGAAACCGCGCCCAAAGCGCAGACTGTGGAGATAG
TAGCTCAAGTCTCCGATAGTGGCAATAGCGATACAGAGCAGTCTGAAAGGGAGGAAGCCCGGGCCGAA
GCACACGCTGCGCGCCCTAAGAGCCGCGAACCTCTCGACCAAACCGAGGGCAAACACCTGCCCAA
GTAATGCTGAGGAGCGGAGCAGCATGGATCGCAGCGGTGACACAGGAGTCAGACGAACGCCCATCTT
CCCCACCATCTAAACCAACATTTCTGCCCGAGTAAAAGGAAAAAAGGTCTGCGAGACTCTCGGAA
GGGATGTTCTGCCTAAGCCAGAGGCGGGTCACTATCTCAGATGATTTGAAGGGCGGGAGGTCTGCC
AGCCGAAGAGGATCAGGCCCTTCCATCCCCCTGGTTCTCCCTGGGCTAATAGACCGTTGCCGGCCTCATT
GGCACCTACCCCACTGGACAGTGCATGAGCCCGTAGGCTCCCTGACACCTGCACCCGTCCTAGACCT
CTGGATCCAGCGCCCGAGTTACACCTGAGGCCTCACACCTGCTGGAAGACCCCGATGAGGAAACGCTC
AGGCCGTGAAGGCCCTTCGGGAAATGGCCGATACCGTATCCCCAGAAAGAAGAAGCTGCCATTTGTGG
TCAGATGGACCTGAACCACCTCCTCCTCGCGGTCAATTTGGATGAGCTGACAACCACCTGGAGAGCATG
ACCGAGGACCTGAATCTGGATTACCACTGACACCTGAACTCAACGAGATACTCGATACTTCTTGAATG
ATGAGTGCCTGCTCCATGCTATGCATATCAGCACCGGCTTGAACATTTTCGATACATCTTTGTTT

ACGCGTACGCGGCCGCTCGAGCAGAACTCATCTCAGAAGAGGATCTGGCAGCAAATGATATCCTGGATT
ACAAGGATGACGACGATAAGGTTTAA

Protein Sequence:

>VC101044 representing YP_001129468

Red=Cloning sites Green=Tags

MRPKKDGLDFLRLTPEIKKQLGSLVSDYCNVLNKEFTAGSVEITLRSYKICKAFINEAKAHGREWGGLM
ATLNICNFWAILRNNRVRRAENAGNDACSIACPIVMRYVLDHLIVVTDREFFIQAPSNRMVIPATIGTAM
YKLLKHSRVRAYTYSKVLGVDRAAIMASGKQVVEHLNRMEKEGLLSSKFKAFCWKVFTYPVLEEMFQTMV
SSKTGHLTDDVKDVRALIKTLPRASYSSHAGQRSYVSGVLPACLSTKSKAVETPILVSGADRMDEELMG
NDGGASHTEARYSQGFHAFTDELESLPSTMPLKPGAQSADCGDSSSSSDSGNSDTEQSEREEARAE
APRLRAPKSRRTSRPNRQTPCPSNAEEPEQPWIAAVHQESDERPIFPHPSKPTFLPPVKRKKGLRDSRE
GMFLPKPEAGSAISDVFEGREVCQPKRIRPFHPPGSPWANRPLPASLAPTPTGPVHEPVGSLTPAPVPRP
LDPAPAVTPEASHLLEDPEETSQAVKALREMAADVIPQKEEAATCGQMDLNHPPRPHLDELTTTLESM
TEDLNLDSPLELNEILDFTLNDECLLHAMHISTGLSIFDTSLF

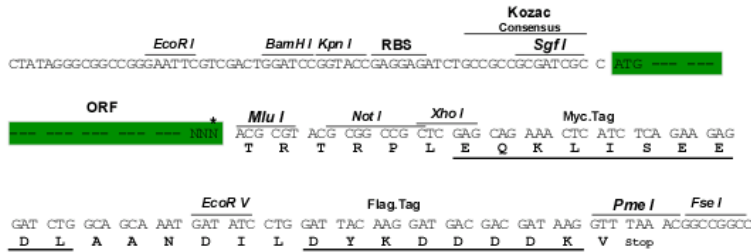
TRTRRLEQKLISEEDLAANDILDYKDDDDKV

Restriction Sites:

Sgfl-MluI

Cloning Scheme:

Cloning sites used for ORF Shuttling:



* The last codon before the Stop codon of the ORF

ACCN: NC_009334

ORF Size: 1815 bp

OTI Disclaimer: The molecular sequence of this clone can be viewed by clicking the "ORF Nucleotide Sequence" link above. This sequence represents the NCBI reference after codon optimization for human cell expression, and retaining the same decoded protein sequence. The stop codon in the native sequence was removed to create the in-frame c-terminal fusion with a Myc-DDK tag.

Components: The ORF clone is ion-exchange column purified and shipped in a 2D barcoded Matrix tube containing 10ug of transfection-ready, dried plasmid DNA (reconstitute with 100 ul of water).

Reconstitution Method:

1. Centrifuge at 5,000xg for 5min.
2. Carefully open the tube and add 100ul of sterile water to dissolve the DNA.
3. Close the tube and incubate for 10 minutes at room temperature.
4. Briefly vortex the tube and then do a quick spin (less than 5000xg) to concentrate the liquid at the bottom.
5. Store the suspended plasmid at -20°C. The DNA is stable for at least one year from date of shipping when stored at -20°C.

RefSeq: [NC_009334.1, YP_001129468](#)
RefSeq ORF: 1815 bp

Locus ID: 5176221

MW: 66.7 kDa