

Product datasheet for **VC101021**

BFLF1 (NC_009334) Virus Tagged ORF Clone

Product data:

Product Type:	Expression Plasmids
Product Name:	BFLF1 (NC_009334) Virus Tagged ORF Clone
Tag:	Myc-DDK
Symbol:	BFLF1
Mammalian Cell Selection:	Neomycin
Vector:	pCMV6-Entry (PS100001)
E. coli Selection:	Kanamycin (25 ug/mL)



[View online »](#)

ORF Nucleotide Sequence:

>The Viral ORF clone VC101021 represents NCBI reference of YP_001129444 with codon optimized for human cell expression
 Red=Cloning site Blue=ORF Green=Tags(s)

GACGTTGTATACGACTCCTATAGGGCGGCCGGAATTCGTCGACTGGATCCGGTACCGAGGAGATCTGCC
 GCC**GCGATCGCC**

ATGGCTCATAAAGTGACAAGCGCAACGAGCCCAATCCTTTACGGGTAAGAGACTCAGTCTTGTCCAC
 TTA CT CGAAGTGGCGTGACCGAAGTTGCCCAAATCGCCGGTCCGACTCCAAAAATGGAAGACTTCGTGCC
 ATGGACGGTGGATAATCTCAAAAGCCAGTTTGGAGCTGTCGGTCTGCTTATGGCCCACTCTATTTGCCA
 GCCAACGCGGAAGAAGGTATAGCTTACCCCCCTTGTGCACACCTACGAATCATTGAGCCCCGCCAGCA
 CATGCAGAGTGTGCGACCTTTGGACACGCTGGTCAACCACTCTGACGCGCTGTGGCATTCTTCGAGGA
 TTATGCCCTCCTGTGCTACTATTGTCTCAATGCACCTCGAGCATGGATTAGCTCTCTCATCACTGGTATG
 GACTTTCTGCATATCCTCATAAAATACTCCCAATGGCCGGGGGGCTGGACAGTCTGTTCATGCCCTCCC
 GGATTCTGGCAATAGATATTCAGCTTCACTTCTATATTTGTAGATGCTTTCTCCAGTGTCTTCTCAGA
 CATGATTAGAAAATGCTAATCTTGGTTACTACAAGCTGGAGTTCCTGAAGTCCATCCTGACGGGACAAAGT
 CCTGCCAACTTCTGTTTCAAATCTATGTGGCCACGCACTACCCCTACATTTCTGACCCTGCCTGGCCAC
 GCATTGTAAAGATTCTCAAGATGTGCCAGGAGATGTCGGACGCGGTCTCTACACTGCTCTGTGCTGCCA
 CCTCCCTACTCGAAACCGGGTTCAGCATCCTTTTCTCAGAGCCGAAAAGGGCGGTTTGGAGCCCTAAGATC
 ACTACAAAAGCTGATTATTGTGGTCTGCTGCTGGGAACCTGGCAAGGCACTGACCTGCTTGGGGGACCAG
 GGCATCATGCCATCGGTCTGAACGCCGAGTATTCAGGCGACGAGTTGGCTGAAGTGGCCCTTGCATAAC
 CAGACCTGAGGCCGGGGATCACTCCAGGGACCATGTCTGCTGGCACCCATGTTTGGCCTCCGACATAAG
 AACGCCTCCCGCACCATATGTCGGCTCTGCGAGAGCCTGGGGGCACATCCGGACGCAAAAGATACGTTGG
 ATCGATTTAAGTCCCTCATTCTGGATTCTTTCGGGAATAATATAAGATCCTGGACCGCATAGTCTTTTT
 GATTA AAAACTCAGAACCCCTGTTGGACGTACCTTGCCCCAGACTGCGGGCTTGGCTT CAGATGTGACC
 CCGCAGGATTTTCAAAACACTTGT TTTGTGATCCACTGTGCGCAATTAATCATAGTATCACAAACCCAT
 CTGTGCTCTTCCGGCAGATTTACCCCCCTTCTTT CAGGCATTTAAGGCTGCACTGGCCGCCGCCAGAA
 CCTGGAGCAGGGCGTCTGCGACTCACTCATCACCTGGTTTATATCTTTAAAAGCACTCAAGTCGCTAGA
 GTAGGAAAAACAATCCTGGTGGATGTGACTAAAGAATTGGACGTTGTACTGCGGATTCACGGCCTGGACC
 TTGTGCAGTCTTATCAGACCTCCAGGTGTATGTC

ACGCGTACGCGGCCGCTCGAGCAGAAACTCATCTCAGAAGAGGATCTGGCAGCAAATGATATCCTGGATT
 ACAAGGATGACGACGATAAGGTTTAA

Protein Sequence:

>VC101021 representing YP_001129444
 Red=Cloning sites Green=Tags

MAHKVTSANEPNPLTGKRLSSCPLTRSGVTEVAQIAGRTPKMEDFVPWTVNLLKSQFEAVGLLMAHSYLP
 ANAEEGIAYPPLVHTYESLSPASTCRVCDLLDTLVNHS DAPVAFFEDYALLCYCLNAPRAWISSLITGM
 DFLHILIKYFPMAGGLDSL FMP SRILAIDIQLHFYICRCFLPVSSDMIRNANLGYKLEFLKSILTGQS
 PANFCFKSMWPRTPTFLTLPGPRTCKDSQDVPGDVGRGLYALCCHLPTRNRVQHPFLRAEKGGSPKI
 TTKADYCGLLLTWQGTDL LGGPGHHAIGLNAEYSGDELAEALAI TRPEAGDHSQGPCLLAPMFLRHK
 NASRTICPLCESLGAHPDAKDTLDRFKSLILDSFGNNIKILDRI VFLIKTQNTLLDVPCPRLRAWLQMC
 PQDFHKHLFCPLCAINH S ITNPSVLFQIYPPSFQAFKAALAAGQNLEQGVCDLITLVYIFKSTQVAR
 VGKTILVDVTKELDVVLR IHGLDLVQSYQTSQVYV

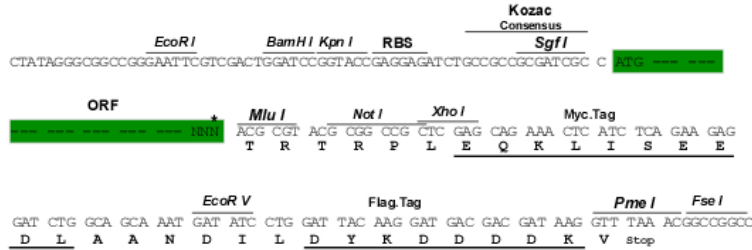
TRTRRLEQKLISEEDLAANDILDYKDDDDKV

Restriction Sites:

Sgfl-MluI

Cloning Scheme:

Cloning sites used for ORF Shutting:



* The last codon before the Stop codon of the ORF

ACCN: NC_009334

ORF Size: 1575 bp

OTI Disclaimer: The molecular sequence of this clone can be viewed by clicking the "ORF Nucleotide Sequence" link above. This sequence represents the NCBI reference after codon optimization for human cell expression, and retaining the same decoded protein sequence. The stop codon in the native sequence was removed to create the in-frame c-terminal fusion with a Myc-DDK tag.

Components: The ORF clone is ion-exchange column purified and shipped in a 2D barcoded Matrix tube containing 10ug of transfection-ready, dried plasmid DNA (reconstitute with 100 ul of water).

Reconstitution Method:

1. Centrifuge at 5,000xg for 5min.
2. Carefully open the tube and add 100ul of sterile water to dissolve the DNA.
3. Close the tube and incubate for 10 minutes at room temperature.
4. Briefly vortex the tube and then do a quick spin (less than 5000xg) to concentrate the liquid at the bottom.
5. Store the suspended plasmid at -20°C. The DNA is stable for at least one year from date of shipping when stored at -20°C.

RefSeq: [NC_009334.1, YP_001129444](#)
RefSeq ORF: 1575 bp

Locus ID: 5176154

MW: 57.9 kDa