

## Product datasheet for **VC100928**

### US3 (NC\_001798) Virus Tagged ORF Clone

#### Product data:

Product Type:	Expression Plasmids
Product Name:	US3 (NC_001798) Virus Tagged ORF Clone
Tag:	Myc-DDK
Symbol:	US3
Mammalian Cell Selection:	Neomycin
Vector:	pCMV6-Entry (PS100001)
E. coli Selection:	Kanamycin (25 ug/mL)



[View online »](#)

**ORF Nucleotide Sequence:**

>The Viral ORF clone VC100928 represents NCBI reference of NP\_044533 with codon optimized for human cell expression  
 Red=Cloning site Blue=ORF Green=Tags(s)

GACGTTGTATACGACTCCTATAGGGCGGCCGGAATTCGTCGACTGGATCCGGTACCGAGGAGATCTGCC  
 GCC**CGGATCGCC**

ATGGCCTGTCGCAAATTTTTCGGGTGTGTACCGCAGACCCGACAAGCGCCAGGAAGCATCCGTTCCGCCCC  
 AAACCAACACGGCACCCGCATTCCTGCTAGCACTTTCTACACACCAGCAGAGGATGCGTATTTGGCCCC  
 CGGGCCTCCCAGACAATTCATCCCTCAAGACCTCCGTCCTCCCGGGGAGGCAGCCGACTGTGCCAGCTC  
 CAGGAAATTTGGCCAGATGCATTCCGACGAGGATTATCCAATCGTTGATGCTGCCGGCGCCGAGGAGG  
 AGGACGAAGCTGACGATGATGCCCGGACGATGTCGCCTACCCGAAGACTACGCCGAAGGACGGTTCT  
 GTCAATGGTCTCTGCTGCTCCACTGCCTGGTGTCTCTGGGCACCCACCTGTTCTGGACGGGCAGCGCT  
 CCTGATGTTAGGACTTGCATACCGGGAAGGTCGGTGCCACCGGTTTACTCCGGAAGAGTTGGACACCA  
 TGGATCGGGAGGCGCTGCGCGCTATTTCTCGCGGTGCAAGCCACCTCTACACTTGCTAAGCTGGTGAC  
 CGGGCTCGGATTCGCAATTCATGGTGCCTGATCCCAGGAGCGAGGGATGCGTCTTTGACAGTTCTCAC  
 CCAAATATCCTCACAGGTCATTGTGAAGGCCGGTGGTACGCCAGTACAAGTCATGAACAAAGGCTGC  
 TCCGCAGACTTAATCATCCTGCCATCCTGCCCTGCTCGACCTGCATGTAGTCTCTGGCGTTACATGTCT  
 GGTTCCTCCTAAGTACCACTGCGACTTGTACACGTACCTGAGCAAGCGACCTAGCCCTCTGGGGCACCTG  
 CAGATTACCGCCGTGAGCAGGACGCTCCTGTCCGCGATTGACTACGTCCACTGTAAGGCATAATCCATA  
 GGGATATCAAAACAGAAAATATCTTCATAAACTCCCGAAAACATTTGCCTCGGAGATTTTGGTGCCGC  
 TTGCTTCGTGCGGGTTGCAGGTCTAGCCATTCCTACTATGGCATTGCCGAACCATTGATACTAATGCA  
 CCCGAGGTTCTGGCCGGCACCCTACACCCAGGTGATAGACATTTGGAGCGCGGGCCTTGTATCTTCG  
 AGACTGCCGTGCATACGGCCAGCTTGTCTCAGCCCAAGAGATCCAGAGAGGCGGCTTGTGACAATCA  
 AATAGCCAGGATCATCCGGCAGGCGCAGGTGCATGTCGATGAGTCCCAACACACGCCGAGTCTCGCTTG  
 ACGGCCACTACCGGTCTCGCGCTGCCGTAATAATCGCCAGCGTGGACCAGGCTGCTTGGACCAGGT  
 ACTACAAAATCCATACAGACGTGGAGTATCTCATCTGTAAGCCCTGACCTTTGATGCCGCACTGCGGCC  
 CAGTGCAGCTGAGCTGCTGCGACTTCCCCTTTTTCACCCAAAA

**ACGCGT**ACGCGGCCGCTCGAGCAGAACTCATCTCAGAAGAGGATCTGGCAGCAAATGATATCCTGGATT  
 ACAAGGATGACGACGATAAGGTTTAA

**Protein Sequence:**

>VC100928 representing NP\_044533  
 Red=Cloning sites Green=Tags

MACRKFCGVYRRPDKRQEASVPPETNTAPAFPASTFYTPAEDAYLAPGPPETIHPSRPPSPGEAARLCQL  
 QEILAQMHSDYPIVDAAGAEEDDEADDDAPDDVAYPEDYAEGRFLLSMVSAAPLPGASGHPPVPGRAAP  
 PDVRTCDTGKVGATGFTPEELDTMDREALRAISRCKPPSTLAKLVTGLGFAIHGALIPGSEGCVFSSH  
 PNYPHRVIKAGWYASTSHEARLLRRLNHPAILPLLDLHVVSQVTLVLPKYHCDLYTYLSKRPSPLGHL  
 QITAVSRQLLSAIDYVHCKGIIHRDIKTENIFINTPENICLGDFAACFVRGCRSSPFHYGIAGTIDTNA  
 PEVLGDPYTVQIDIWSAGLVIFETAVHTASLFSAPRDPERRPCDNQIARIIRQAQVHVHDEFPTHAESRL  
 TAHYRSRAAGNNRPAWTRPAWTRYKIHTDVEYLICKALTFDAALRPSAAELLRLPLFHPK

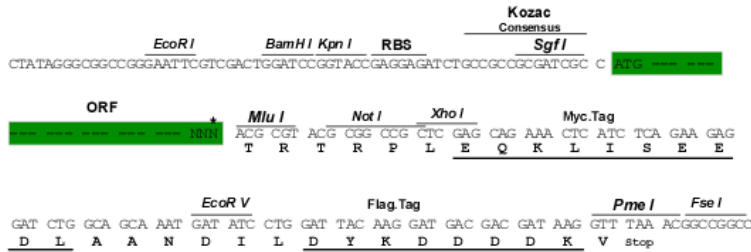
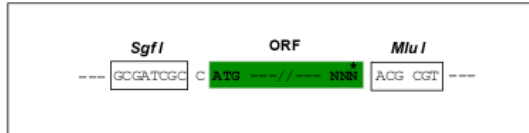
**TR**TRRLEQKLISEEDLAANDILDYKDDDDKV

**Restriction Sites:**

Sgfl-MluI

**Cloning Scheme:**

Cloning sites used for ORF Shuttling:



\* The last codon before the Stop codon of the ORF

**ACCN:** NC\_001798

**ORF Size:** 1443 bp

**OTI Disclaimer:** The molecular sequence of this clone can be viewed by clicking the "ORF Nucleotide Sequence" link above. This sequence represents the NCBI reference after codon optimization for human cell expression, and retaining the same decoded protein sequence. The stop codon in the native sequence was removed to create the in-frame c-terminal fusion with a Myc-DDK tag.

**Components:** The ORF clone is ion-exchange column purified and shipped in a 2D barcoded Matrix tube containing 10ug of transfection-ready, dried plasmid DNA (reconstitute with 100 ul of water).

**Reconstitution Method:**

1. Centrifuge at 5,000xg for 5min.
2. Carefully open the tube and add 100ul of sterile water to dissolve the DNA.
3. Close the tube and incubate for 10 minutes at room temperature.
4. Briefly vortex the tube and then do a quick spin (less than 5000xg) to concentrate the liquid at the bottom.
5. Store the suspended plasmid at -20°C. The DNA is stable for at least one year from date of shipping when stored at -20°C.

**RefSeq:** [NC\\_001798.1](#), [NP\\_044533](#)
**RefSeq ORF:** 1443 bp

**Locus ID:** 1487355

**MW:** 52.7 kDa