

## Product datasheet for **VC100909**

### **UL44 (NC\_001798) Virus Tagged ORF Clone**

#### **Product data:**

Product Type:	Expression Plasmids
Product Name:	UL44 (NC_001798) Virus Tagged ORF Clone
Tag:	Myc-DDK
Symbol:	UL44
Mammalian Cell Selection:	Neomycin
Vector:	pCMV6-Entry (PS100001)
E. coli Selection:	Kanamycin (25 ug/mL)



[View online »](#)

**ORF Nucleotide Sequence:**

>The Viral ORF clone VC100909 represents NCBI reference of NP\_044514 with codon optimized for human cell expression  
 Red=Cloning site Blue=ORF Green=Tags(s)

GACGTTGTATACGACTCCTATAGGGCGGCCGGAATTCGTCGACTGGATCCGGTACCGAGGAGATCTGCC  
 GCC**CGATCGCC**

ATGGCCCTCGGCCGAGTGGGTCTGGCTGTGGCCCTCTGGGGCTTCTCTGGGTTGGTGTCTGCTGGTTC  
 TTGCAAACGCATCTCCGGGAAGGACTATCACAGTGGGTCCCCGGGTAATGCATCTAACGCTGCTCTAG  
 TGCTTCCCCCGCAACGCTAGTGTCTCCCGGACGACCCCCACCCCCCTCAGCCTCGGAAGGCAACCAAA  
 AGTAAGGCGTCCACGGCTAAGCCAGCTCTCCACCGAAAAGTGGTCCCCCTAAGACCTCTCCGAACCG  
 TTCGCTGCAACAGGCACGATCCTCTCGCTCGGTACGGATCTAGGGTCCAGATTGATGTCGCTTCTCTAA  
 CTCAACCCGGACAGAGTTCAAGCTGCAATCTGGCGGTACGCTACGGCGACGGATGCCGAGATTGGAACA  
 GCCCTTCCCTTGAGGAGGTGATGGTCAACGTGAGTGTCTCCCTGGAGGACAGCTTGTCTACGACTCTG  
 CACCCAATAGGACTGACCCACACGTGATCTGGGAGAAGGCGCTGGTCTGGCGCATCCCCAGACTGTA  
 CTCTGTGGTGGGACCGCTGGGGAGGCAGAGGCTGATTATCGAGGAATCACACTGAAAACACAGGGCATG  
 TATTACTGGGTCTGGGTAGGACAGATCGACCTTCTGCTTATGGCACCTGGGTGCGGGTCAGAGTGTTC  
 GCCCCCTTCTTGACAATCCATCCTCACGCCGTCTGGAAGGGCAGCCTTCAAGGCGACCTGTACCGC  
 AGCTACATATTACCCCGCAATAGAGCTGAATTTGTGTGGTTCGAAGATGGAAGGAGGGTGTTCGATCCA  
 GCACAAATCCACTCAGACTCAGGAGAATCCTGATGGTTTCACTACAGTGTCAACCGTACTCCGCCG  
 CTGTTGGCGGCCAGGACCTCCAAGGACATTTACCTGCCAAGTACCTGGCATCGGGATAGTGTCTCT  
 TTCTCGACGGAACGCTTCAGGAACGGCTCCGTTCTCCCCGCCAACCATCACCATGGAGTTACCGGT  
 GACCACGCGTGTGATCCGCCGCTGTGTGCCGAGGGAGTGACGTTTGCCTGGTTCTGGGCGACGACA  
 GCTCTCTGCTGAAAAAGTGGCGGTTGCCTCTCAGACCAGCTGTGGAAGGCCAGGACAGCCACAATACG  
 CAGTACCCTTCCCGTATCCTACGAACAGACAGAGTATATCTGTAGGTTGGCAGGTTATCCTGATGATC  
 CCAGTGTGGAGCATCACGGAAGTCATCAGCCGCCCCAGGGATCCAAGTACAGAGACAAGTATCCGGG  
 CCGTTGAGGGCGCCGGATCGCGGTGGCAGTCTTGTGCGCGTGGTTCTGGCCGGAACAGCAGTTGTGTA  
 CCTCACACACGCAAGCTCCGTACGGTATAGGCGACTGCGA

**ACGCGT**ACGCGGCCGCTCGAGCAGAAAAGTCACTCTCAGAAGAGGATCTGGCAGCAAATGATATCCTGGATT  
 ACAAGGATGACGACGATAAGGTTTAA

**Protein Sequence:**

>VC100909 representing NP\_044514  
 Red=Cloning sites Green=Tags

MALGRVGLAVGLWGLLWVGVVVLANASPGRTITVGRGNASNAAPSASPRNASAPRTTPTPPQPRKATK  
 SKASTAKPAPPPKTPPKTSSEPVRCNRHDPLARYGSRVQIRCFPNSTRTEFRLQIWRYPATDAEIGT  
 APSLEEVMVNSAPPGGQLVYDSAPNRDPHVIWAEGAGPGASPRLYSVGPLGRQRLIEELTLETQGM  
 YYVWGRDRPSAYGTWVRVFRPPSLTIHPHAVLEGQPFKATCTAATYYPGNRAEFVWFEDGRRVFD  
 AQIHTQTQENPDGFSTVSTVTSAAVGGQPPRTFTCQLTWHRDSVSFRRNASGTASVLPRPTITMEFTG  
 DHAVCTAGCVPEGVTFWFLGDDSSPAEKVAVASQTSRGRPGTATIRSTLPVSYEQTEYICRLAGYDPGI  
 PVLEHGHSHQPPRDPTEPRQVIRAVEGAGIGVAVLVAVVLAGTAVVYLTHASSVRYRRLR

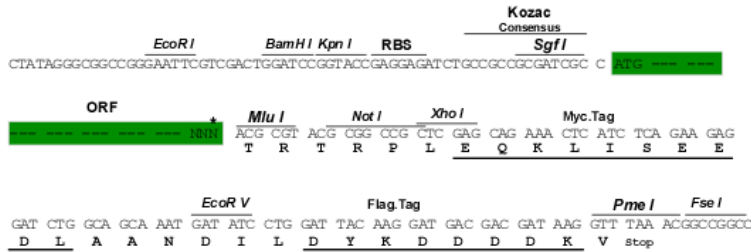
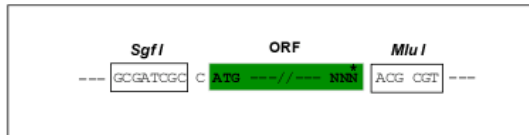
**TR**TRRLEQKLISEEDLAANDILDYKDDDDKV

**Restriction Sites:**

Sgfl-MluI

**Cloning Scheme:**

Cloning sites used for ORF Shuttling:


**ACCN:** NC\_001798

**ORF Size:** 1440 bp

**OTI Disclaimer:** The molecular sequence of this clone can be viewed by clicking the "ORF Nucleotide Sequence" link above. This sequence represents the NCBI reference after codon optimization for human cell expression, and retaining the same decoded protein sequence. The stop codon in the native sequence was removed to create the in-frame c-terminal fusion with a Myc-DDK tag.

**Components:** The ORF clone is ion-exchange column purified and shipped in a 2D barcoded Matrix tube containing 10ug of transfection-ready, dried plasmid DNA (reconstitute with 100 ul of water).

- Reconstitution Method:**
1. Centrifuge at 5,000xg for 5min.
  2. Carefully open the tube and add 100ul of sterile water to dissolve the DNA.
  3. Close the tube and incubate for 10 minutes at room temperature.
  4. Briefly vortex the tube and then do a quick spin (less than 5000xg) to concentrate the liquid at the bottom.
  5. Store the suspended plasmid at -20°C. The DNA is stable for at least one year from date of shipping when stored at -20°C.

**RefSeq:** [NC\\_001798.1](#), [NP\\_044514](#)
**RefSeq ORF:** 1440 bp

**Locus ID:** 1487331

**MW:** 51.7 kDa